



# Hudson Bay Complex Mariners' Guide

1

The following mammals are common in the Hudson Bay Complex area; however, other species may also be seen. It is possible for marine mammals to venture outside of their common habitat ranges and be seen elsewhere.

## Killer Whale

**Length:** 7-9 m<sup>14</sup>

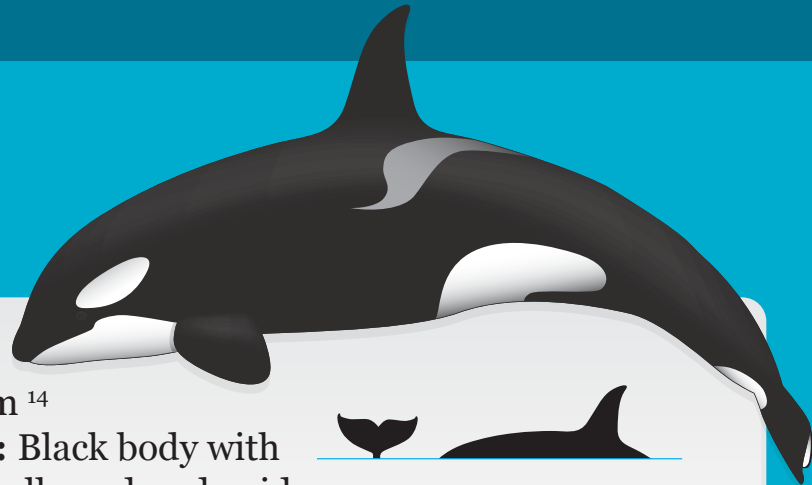
**Appearance:** Black body with white throat, belly and underside, and white patch behind eye.

Triangular dorsal fin up to 2 m tall.<sup>14</sup>

**Behaviour:** Typically form groups of 2-25.<sup>15</sup>

**Sensitive months (calving and foraging activities and risk of ice entrapment):** J F M A M J J A S O N D

**Status:** Special concern<sup>14</sup>



## Bowhead Whale

**Length:** 13-19 m

**Appearance:** The body is predominantly black with some white (non-pigmented) regions appearing on the chin, eyelids, flipper insertions, tail stock and flukes.<sup>1</sup>

**Behaviour:** Often alone but sometimes in groups of 2-10.

**Sensitive months (calving and foraging activities and risk of ice entrapment):** J F M A M J J A S O N D<sup>1</sup>

**Status:** Special concern<sup>2</sup>



## Minke Whale

**Length:** 6-10 m<sup>16</sup>

**Appearance:** Dark grey, black or brown back with a white spot on each pectoral fin. Large hook-shaped dorsal fin. Relatively small tail.<sup>16</sup>

**Behaviour:** Mainly solitary. Snout appears first when they surface to breathe. Occasionally breach out of the water.

**Sensitive months (calving and foraging activities and risk of ice entrapment):** Unknown

**Status:** Not at risk<sup>17</sup>



## Hooded Seal

**Length:** 2-3 m<sup>7</sup>

**Appearance:** Silvery-white with dark blotches. Males have a black "hood" on forehead and inflatable balloon-like nasal cavity.<sup>7</sup>

**Behaviour:** Solitary, except during pupping, mating and moulting.<sup>7</sup>

**Sensitive months (calving and foraging activities and risk of ice entrapment):** J F M A M J J A S O N D<sup>7</sup>

**Status:** Not at risk



## Polar Bear

**Length:** Up to 3 m<sup>18</sup>

**Appearance:** White, but can appear yellow or light brown.<sup>18</sup>

**Behaviour:** Solitary, except during breeding and cub rearing. Majority of time is spent on sea ice.

**Sensitive months (calving and foraging activities and risk of ice entrapment):**

J F M A M J J A S O N D<sup>19</sup>

**Status:** Special concern<sup>18</sup>



## Beluga Whale

**Length:** 2-5 m<sup>3</sup>

**Appearance:** Adults are white, and young are grey. No dorsal fin, only a small portion of the body is visible out of the water. Blow is low and hardly visible.<sup>3</sup>

**Behaviour:** Found in small groups, but sometimes in groups of hundreds to thousands during annual migrations.

**Sensitive months (calving and foraging activities and risk of ice entrapment):** J F M A M J J A S O N D<sup>3</sup>

**Status:** Special concern<sup>3</sup>



## Bearded Seal

**Length:** 2-3 m<sup>8</sup>

**Appearance:** Grey with brown tinge on the head and lighter colouring on the underside. Long, white whiskers and square-shaped front flippers.

**Behaviour:** Solitary but form small groups during mating and moulting.

**Sensitive months (calving and foraging activities and risk of ice entrapment):** J F M A M J J A S O N D<sup>8</sup>

**Status:** Data deficient<sup>9</sup>



## Caribou

**Length:** Up to 2 m

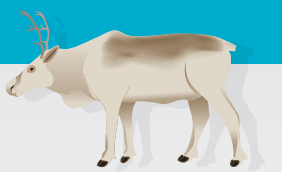
**Appearance:** Both males and females have antlers, but males lose antlers after mating season. Barren-ground population (brown and white coat pattern in the fall); Eastern Migratory & Torngat (almost completely white coat in winter and light to medium brown during summer).<sup>21,22</sup>

**Behaviour:** Often seen in herds. Each year females return to specific calving geographic areas, despite overlapping in the winter with neighboring subpopulations.<sup>22</sup>

**Sensitive months (calving and foraging activities and risk of ice entrapment):**

J F M A M J J A S O N D<sup>21-23</sup>

**Status:** Endangered (Eastern migratory population and Torngat Mountains population)<sup>21</sup>, Threatened (Barren-Ground population)<sup>22</sup>



## Narwhal

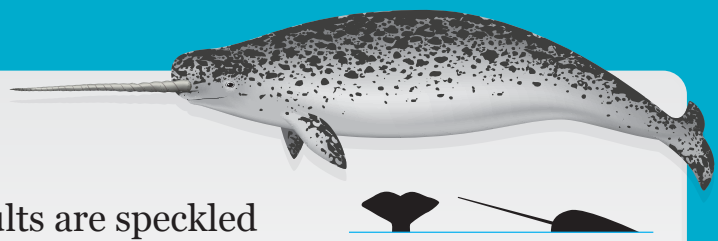
**Length:** 4-5 m<sup>4</sup>

**Appearance:** Adults are speckled grey and white while young are dark grey or black. Males have a spiraled tusk up to 3 m long. No dorsal fin. Blow is puffy. Not much of the body is visible out of the water.

**Behaviour:** Often in small groups in summer (<10 individuals) but may be hundreds during spring and fall migrations.<sup>4</sup>

**Sensitive months (calving and foraging activities and risk of ice entrapment):** J F M A M J J A S O N D<sup>4</sup>

**Status:** Special concern<sup>4</sup>



## Harp Seal

**Length:** Up to 2 m<sup>10</sup>

**Appearance:** Light grey body with black or brown head and long, black "harp-shaped" saddle on the back.

**Behaviour:** When migrating, the seals leap out of the water, like dolphins.

**Sensitive months (calving and foraging activities and risk of ice entrapment):** J F M A M J J A S O N D<sup>10,11</sup>

**Status:** Not assessed



## Ringed Seal

**Length:** Up to 1.5 m<sup>12</sup>

**Appearance:** Dark grey body with light rings on the back and silver colouring on the front.

**Behaviour:** Associated with ice floes and pack ice. Maintain breathing holes throughout winter.

**Sensitive months (calving and foraging activities and risk of ice entrapment):** J F M A M J J A S O N D<sup>13</sup>

**Status:** Special concern<sup>12</sup>



## Greenland Shark

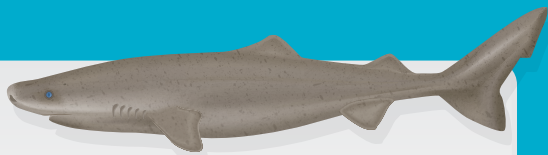
**Length:** 2-5 m<sup>5</sup>

**Appearance:** May be brown, black, grey or a spotted mix of all three. Two small dorsal fins and small eyes.<sup>6</sup>

**Behaviour:** Slow swimming. Usually observed near the surface during the winter and retreats to deeper waters (180-550 m) during the summer.

**Sensitive months (calving and foraging activities and risk of ice entrapment):** Unknown

**Status:** Not assessed



## Walrus

**Length:** 2-4 m

**Appearance:** Brown skin. Broad flat muzzle, white whiskers and two distinctive tusks.<sup>20</sup>

**Behaviour:** Occur in tight groups on ice floes or on land.

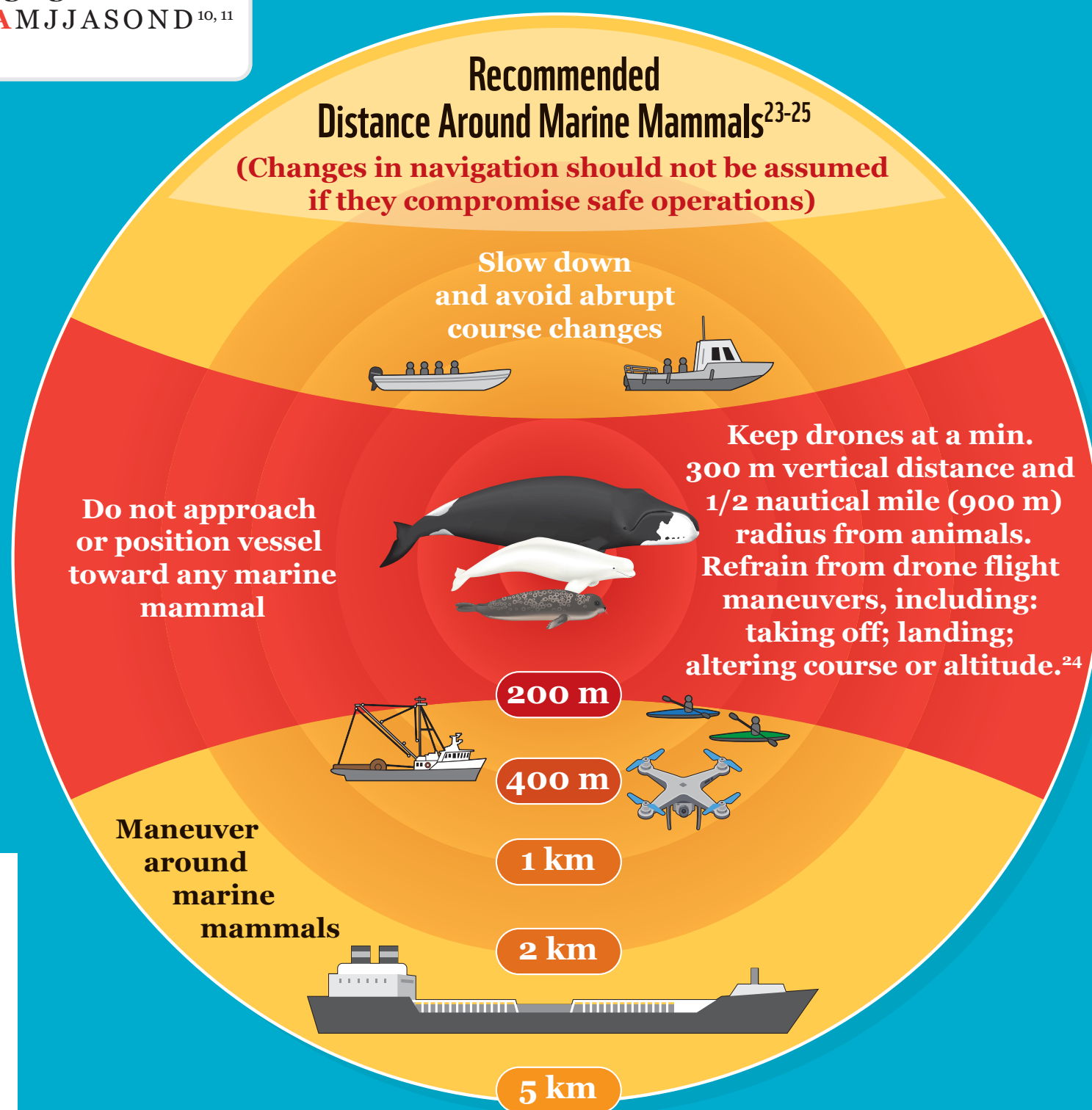
**Sensitive months (calving and foraging activities and risk of ice entrapment):**

J F M A M J J A S O N D<sup>20</sup>

**Status:** Special concern<sup>20</sup>



Scan for a digital version with references





# Hudson Bay Complex Mariners' Guide 2

## WWF RECOMMENDATIONS

### Walrus Haulouts

- Maintain a setback of 5 km seaward of a walrus haulout, any time during the year.

### Whale Sensitive Habitats

- Be cautious in whale calving, foraging and migration areas from mid-July to mid-September and follow mitigation procedures in the vicinity of marine mammals:<sup>19</sup>
  - Wildlife will be given right of way.
  - Adhere to setback distances (see chart on first page).
  - Maintain a straight course and constant speed, avoiding erratic maneuvers.
  - When marine mammals appear to be trapped or disturbed by vessel movements, implement appropriate measures to mitigate disturbance, including stopping movement until wildlife have moved away from the immediate area.

### Polynyas (Ikirasaq)

- Avoid shipping and icebreaking activities, particularly through inlets, between mid-November to mid-July (Ukiaq to Upingaaq seasons).<sup>19</sup>

### Floe edges (Sinaaq)

- Avoid shipping through and around floe edges during mid-March to mid-July (Upingaksaq and Upingaaq seasons).<sup>26</sup>

### Discharges and Dumping

- Avoid discharging operational wastes within or near protected area boundaries.<sup>27</sup>

### Reduce Black Carbon

- Avoid using heavy fuel oil and use distillate fuels and a particulate filter or cleaner alternative fuels.<sup>27</sup>

### Icebreaking

- Avoid icebreaking during ice formation and breakup.<sup>28</sup>
- Avoid crossing Inuit on-ice community travel routes, unless accompanied by ice bridging plan and having consulted with municipal councils, HTOs and regional wildlife organizations within a 300 km radius of the route.<sup>19</sup>
- Avoid icebreaking through caribou sea-ice crossings during mid-November to mid-July (beginning of Ukiaq to end of Upingaaq seasons).<sup>19</sup>

### Speeds

- When within 100m of a marine mammal, reduce speed to less than 7 knots. Avoid abrupt course changes.<sup>29</sup>

### Seabird Colonies

- When birds are present, year round:
  - 500 m setback for ships from seabird colonies.
  - 100 m setback from seabird colonies for zodiacs, kayaks and other small launch vessels.
  - 2 km setback distance from Ivory gull breeding sites.

### Seal Pupping (Whelping)

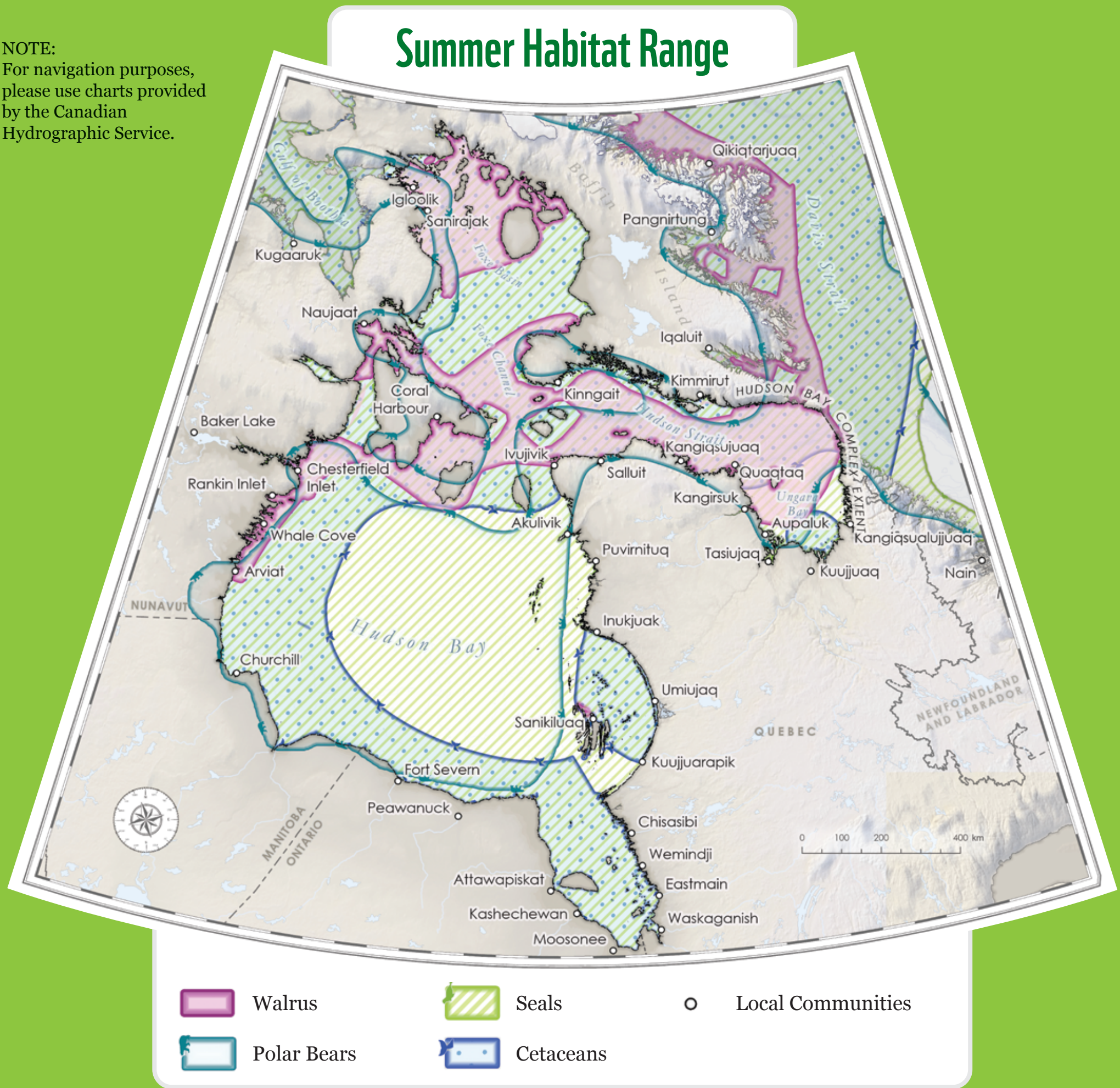
- Avoid seal whelping (delivery and nursing of seal pups) areas from late-February to early-July.<sup>30</sup>

### Local Community and Livelihood Areas

- Give right of way.
- Do not approach or take photographs of harvesting activities.



NOTE:  
For navigation purposes,  
please use charts provided  
by the Canadian  
Hydrographic Service.



Scan for a digital version with references



# Hudson Bay Complex Mariners' Guide

## LOCAL COMMUNITY PHONE NUMBERS & HUNTER AND TRAPPER ORGANIZATIONS:

Contact the nearest community Hunters and Trappers Organization/Association for local knowledge of marine mammals:<sup>31</sup>

- Aiviit Hunters & Trappers, Coral Harbour: 867-925-8622
- Aiviq Hunters & Trappers, Kinngait: 867-897-8214
- Amaruq Hunters & Trappers, Iqaluit: 867-979-6848
- Aqigiq Hunters & Trappers, Chesterfield Inlet: 867-898-9063
- Arviat Hunters & Trappers, Arviat: 867-857-2636
- Ivujivik Municipality Hall: 819-922-9940
- Kangiqsujuaq Municipality Hall: 819-338-3342
- Mayukalik Hunters & Trappers, Kimmirut: 867-939-2355
- Nunavik Marine Region Wildlife Board: 819-254-8667
- Pangnirtung Hunters & Trappers, Pangnirtung: 867-473-8751
- Rankin Inlet Hunters & Trappers, Rankin Inlet: 867-645-2350
- Regional Nunavimmi Umajulirijiit Katujiqatigininga / Nunavik Hunting, Fishing and Trapping Organization: 819-964-0645
- Sanikiluaq Hunters & Trappers, Sanikiluaq: 867-266-8709
- Town of Churchill: 204-675-8871

## ENVIRONMENTAL EMERGENCY CONTACT

Department of Environment and Natural Resources  
Government of the Northwest Territories & Nunavut

- Contact information to report a marine environmental emergency, such as an oil spill or oiled wildlife: 867-920-8130

## CANADIAN WILDLIFE SERVICE

Canadian Wildlife Service contact information:

- Phone: 1-800-668-6767
- Email: [ec.priseaccessoire-incidentaltake.ec@canada.ca](mailto:ec.priseaccessoire-incidentaltake.ec@canada.ca)

## NATIONAL PARKS

**Ukkusiksalik National Park:**

- Phone: 867-462-4500
- Email: [ukkusiksalik.info@pc.gc.ca](mailto:ukkusiksalik.info@pc.gc.ca)

**Auyuittuq National Park:**

- Pangnirtung Office
  - Phone: 867-473-2500
  - Email: [nunavut.info@pc.gc.ca](mailto:nunavut.info@pc.gc.ca)
- Qikiqtarjuaq Office
  - Phone: 867-927-8834
  - Email: [nunavut.info@pc.gc.ca](mailto:nunavut.info@pc.gc.ca)

## WWF-CANADA CONTACT

Please contact for errors, omissions, comments or additions.

**Sam Davin**, Senior Specialist, Wildlife & Industry, WWF-Canada:  
[sdavin@wwfcanada.org](mailto:sdavin@wwfcanada.org)

## MARINE WILDLIFE SIGHTINGS, ENCOUNTERS & INCIDENTS

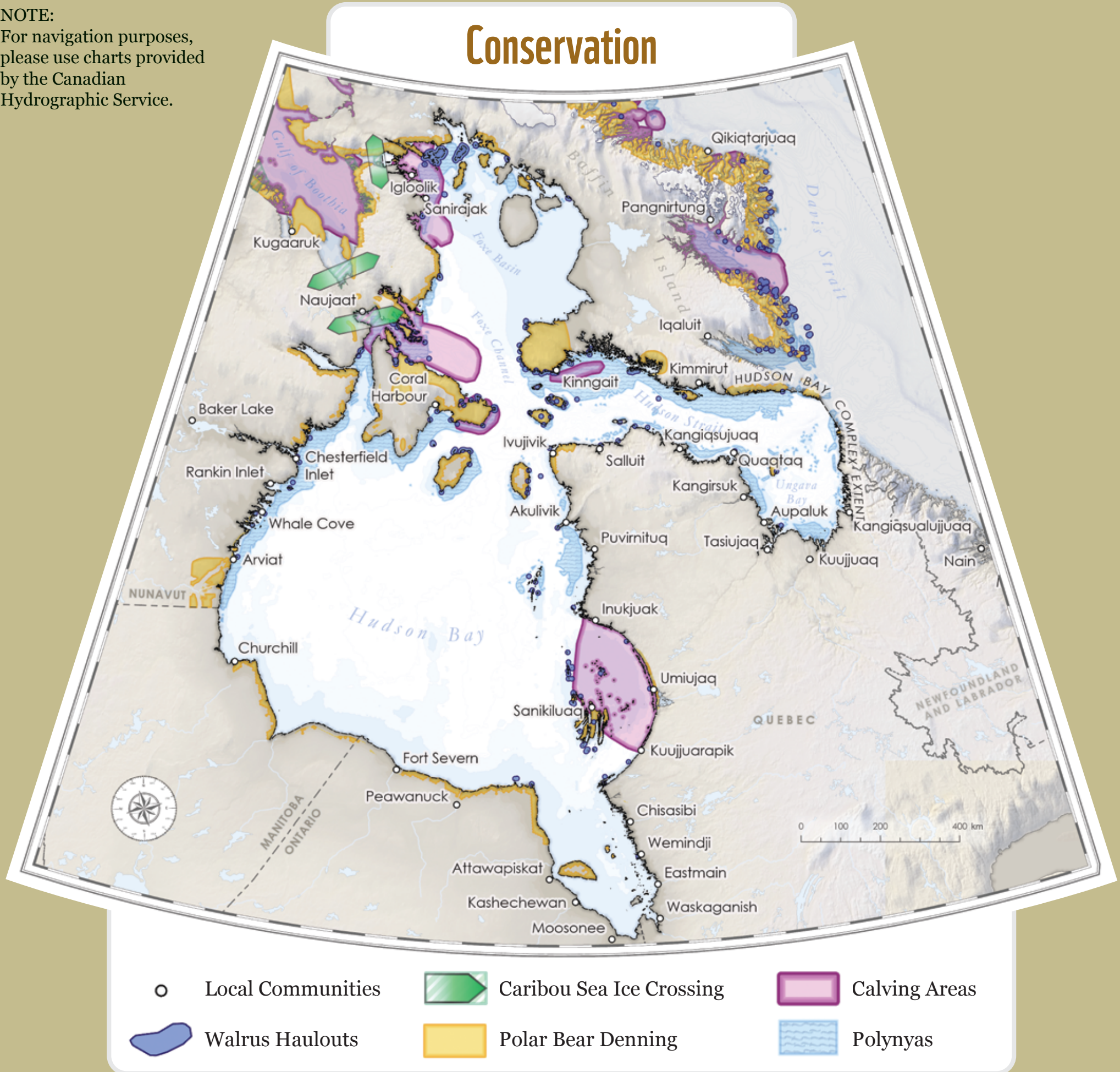
Report to: Department of Fisheries and Oceans, **Steve Ferguson**,  
204-983-5057, [steve.ferguson@dfo-mpo.gc.ca](mailto:steve.ferguson@dfo-mpo.gc.ca)

You may be asked to provide:

- Date and time you found the animal or witnessed the incident
- Specific location, including latitude and longitude (if available) or driving directions (if accessible by land)
- Species or type of animal, including a description of the size, colour, features
- Condition of the animal: alive, sick, injured, recently dead, badly rotting
- Number of animals involved
- Your contact information, including name and phone number



NOTE:  
For navigation purposes, please use charts provided by the Canadian Hydrographic Service.



Scan for a digital version with references and additional community contacts



# Hudson Bay Complex Mariners' Guide

## COMMUNITY CONTACTS

- Aiviit Hunters & Trappers, Coral Harbour: 867-925-8622
- Aiviq Hunters & Trappers, Kinngait: 867-897-8214
- Akulivik Hunters, Fishermen & Trappers Association: 819-496-2222
- Amaruq Hunters & Trappers, Iqaluit: 867-979-6848
- Aqigiq Hunters & Trappers, Chesterfield Inlet: 867-898-9063
- Arviat Hunters & Trappers, Arviat: 867-857-2636
- Attawapiskat First Nation: 705-997-2375
- Aupaluk Municipality Hall: 819-491-7070
- Baker Lake Hunters & Trappers, Baker Lake: 867-793-2520
- Chisasibi Local Cree Trappers' Association, Chisasibi: 819-855-2878
- Eastmain Local Cree Trappers' Association, Eastmain: 819-977-2165
- Fort Severn First Nations: 807-478-2515
- Hall Beach Hunters & Trappers, Sanirajak: 867-928-8994
- Igloolik Hunters & Trappers, Igloolik: 867-934-8807
- Inukjuak Administration: 819-254-8822
- Issatik Hunters and Trappers, Whale Cove: 867-896-9944
- Ivujivik Municipality Hall: 819-922-9940
- Kangiqsualujuaq Municipality Hall: 819-337-5271
- Kangiqsujuaq Municipality Hall: 819-338-3342
- Kangirsuk Municipality Hall: 819-935-4388
- Kashechewan First Nation: 705-275-4440
- Kurtairujuark Hunters & Trappers, Pelly Bay, Kugaaruk: 867-769-7002
- Kuujuaq Municipality Hall: 819-964-2943
- Mayukalik Hunters & Trappers, Kimmirut: 867-939-2355
- Moose Cree First Nation, Moosonee: 705-658-4619
- Nain Inuit Community Government: 709-922-2842
- Nattivak Hunters & Trappers, Qikiqtarjuaq: 867-927-8836
- Naujaat Hunters & Trappers, Naujaat: 867-462-4334
- Northern Village of Umiujaq: 819-331-7191
- Nunavik Marine Region Wildlife Board: 819-254-8667
- Pangnirtung Hunters & Trappers, Pangnirtung: 867-473-8751



# Hudson Bay Complex Mariners' Guide

- Puvirnituk Municipality Hall: 819-988-2825
- Quaataq Municipality Hall: 819-492-9912
- Rankin Inlet Hunters & Trappers, Rankin Inlet: 867-645-2350
- Regional Nunavimmi Umajulirijiit Katuqiqatigininga / Nunavik Hunting, Fishing and Trapping Organization: 819-964-0645
- Salluit Municipality Hall: 819-255-8953
- Sanikiluaq Hunters & Trappers, Sanikiluaq: 867-266-8709
- Tasiujaq Municipality Hall: 819-633-9924
- Town of Churchill: 204-675-8871
- Waskaganish Local Cree Trappers' Association Office, Waskaganish: 819-895-2030 EXT; 3822
- Weenusk First Nation, Peawanuck: 705-473-2554
- Wemindji Local Cree Trappers' Association Office, Wemindji: 819-978-3005
- Whapmagoostui First Nation, Kuujjuarapik: 819-929-3384



# Hudson Bay Complex Mariners' Guide

## REFERENCES

- 1 Government of Canada, "COSEWIC Assessment and Update Status Report on the Bowhead Whale in Canada," Species at Risk Act: COSEWIC assessments and status reports, Oct. 06, 2009. <https://www.canada.ca/en/environment-climate-change/services/species-risk-public-registry/cosewic-assessments-status-reports/bowhead-whale.html> (accessed Sep. 13, 2022).
- 2 Government of Canada, "Bowhead Whale (*Balaena mysticetus*), Eastern Canada-West Greenland population - Species search - Species at risk registry," Species at risk public registry>Species search, Feb. 02, 2021. <https://species-registry.canada.ca/index-en.html#/species/1054-722> (accessed Sep. 13, 2022).
- 3 COSEWIC, "COSEWIC assessment and status report on the Beluga whale, *Delphinapterus leucas*, Eastern High Arctic - Baffin Bay population, Cumberland Sound population, Ungava Bay population, Western Hudson Bay population, Eastern Hudson Bay population and James Bay population in Canada," COSEWIC, Committee on the Status of Endangered Wildlife in Canada = COSEPAC, Comité sur la situation des espèces en péril au Canada, Ottawa, ON, 2020. [Online]. Available: [https://wildlife-species.canada.ca/species-risk-registry/virtual\\_sara/files/cosewic/sr\\_Beluga\\_Whale\\_2020\\_e.pdf](https://wildlife-species.canada.ca/species-risk-registry/virtual_sara/files/cosewic/sr_Beluga_Whale_2020_e.pdf)
- 4 COSEWIC, "COSEWIC assessment and update status report on the Narwhal, *Monodon monoceros*, in Canada," COSEWIC=COSEPAC, Ottawa, Ont., 2004. [Online]. Available: [https://wildlife-species.canada.ca/species-risk-registry/virtual\\_sara/files/cosewic/sr\\_narwhal\\_e.pdf](https://wildlife-species.canada.ca/species-risk-registry/virtual_sara/files/cosewic/sr_narwhal_e.pdf)
- 5 J. Nielsen et al., "Assessing the reproductive biology of the Greenland shark (*Somniosus microcephalus*)," PLoS ONE, vol. 15, no. 10, p. e0238986, Oct. 2020, doi: 10.1371/journal.pone.0238986.
- 6 DFO, "Greenland shark," Identify a species in the Atlantic, Dec. 19, 2016. <https://www.dfo-mpo.gc.ca/species-especes/profiles-profil/greenlandshark-laimargueatlantique-eng.html> (accessed Sep. 13, 2022).
- 7 K. M. Kovacs, "Hooded Seal - an overview | Encyclopedia of Marine Mammals (Third Edition)," 2018. <https://www.sciencedirect.com/topics/agricultural-and-biological-sciences/hooded-seal> (accessed Aug. 10, 2022).
- 8 DFO, "Bearded seal," Nov. 25, 2016. <https://www.dfo-mpo.gc.ca/species-especes/profiles-profil/beardedseal-phoquebarbu-eng.html> (accessed Sep. 13, 2022).
- 9 COSEWIC, "Bearded Seal (*Erignathus barbatus*)," Species at risk public registry>Species search, Feb. 02, 2021. [https://species-registry.canada.ca/index-en.html#/species/344-827#cosewic\\_assessment](https://species-registry.canada.ca/index-en.html#/species/344-827#cosewic_assessment) (accessed Sep. 13, 2022).
- 10 DFO, "Harp seal," Feb. 18, 2022. <https://www.dfo-mpo.gc.ca/species-especes/profiles-profil/harpseal-phoquegroenland-eng.html> (accessed Sep. 13, 2022).
- 11 DFO, "2019 Status of Northwest Atlantic Harp Seals, *Pagophilus groenlandicus*," Fisheries and Oceans Canada, Northwest Atlantic Fisheries Centre, St. John's, NL (Canada), 2019. [Online]. Available: [https://polarbearsience.files.wordpress.com/2020/05/2019-harp-seal-status\\_dfo-2020\\_march-020-eng.pdf](https://polarbearsience.files.wordpress.com/2020/05/2019-harp-seal-status_dfo-2020_march-020-eng.pdf)
- 12 COSEWIC, "COSEWIC assessment and status report on the Ringed Seal, *Pusa hispida*, in Canada," COSEWIC, Committee on the Status of Endangered Wildlife in Canada = COSEPAC, Comité sur la situation des espèces en péril au Canada, Ottawa, ON, 2019. [Online]. Available: [https://wildlife-species.canada.ca/species-risk-registry/virtual\\_sara/files/cosewic/sr-PhoqueAnneleRingedSeal-v00-2020ct-Eng.pdf](https://wildlife-species.canada.ca/species-risk-registry/virtual_sara/files/cosewic/sr-PhoqueAnneleRingedSeal-v00-2020ct-Eng.pdf)
- 13 O. Bengtsson, C. Lydersen, K. M. Kovacs, and U. Lindström, "Ringed seal (*Pusa hispida*) diet on the west coast of Spitsbergen, Svalbard, Norway: during a time of ecosystem change," Polar Biol, vol. 43, no. 7, pp. 773–788, Jul. 2020, doi: 10.1007/s00300-020-02684-5.



# Hudson Bay Complex Mariners' Guide

- 14 COSEWIC, "Killer Whale (*Orcinus orca*), Northwest Atlantic / Eastern Arctic population - Species search - Species at risk registry," Feb. 02, 2021. <https://species-registry.canada.ca/index-en.html#/species/598-6> (accessed Sep. 13, 2022).
- 15 K. J. Lefort et al., "A review of Canadian Arctic killer whale (*Orcinus orca*) ecology," *Can. J. Zool.*, vol. 98, no. 4, pp. 245–253, Apr. 2020, doi: 10.1139/cjz-2019-0207.
- 16 WWF-Canada, Marine Mammal Observation Network (MMON), and M – Expertise Marine, "A Fisher's Guide to Whales on the East Coast of Canada. A guide to whales and other marine species for the fishing industry.," Marine Mammal Observation Network, Quebec, Canada, 2022. [Online]. Available: [https://navigationbaleines.ca/wp-content/uploads/GUIDE-FISHERSGUIDE\\_EN.pdf?\\_ga=2.242298050.1187969218.1657205646-379494906.1657205646](https://navigationbaleines.ca/wp-content/uploads/GUIDE-FISHERSGUIDE_EN.pdf?_ga=2.242298050.1187969218.1657205646-379494906.1657205646)
- 17 COSEWIC, "Common Minke Whale North Atlantic subspecies (*Balaenoptera acutorostrata acutorostrata*)," Species at risk public registry>Species search, Feb. 02, 2021. <https://species-registry.canada.ca/index-en.html#/species/894-0> (accessed Sep. 13, 2022).
- 18 COSEWIC, "COSEWIC assessment and status report on the polar bear, *Ursus maritimus*, in Canada," Committee on the Status of Endangered Wildlife in Canada = Comité sur la situation des espèces en péril au Canada, Ottawa, ON, 2019. [Online]. Available: [https://wildlife-species.canada.ca/species-risk-registry/virtual\\_sara/files/cosewic/OursBlancPolarBear-2019-Eng.pdf](https://wildlife-species.canada.ca/species-risk-registry/virtual_sara/files/cosewic/OursBlancPolarBear-2019-Eng.pdf)
- 19 NPC, "Nunavut Land Use Plan. Draft July 2021." Nunavut Planning Commission, Jul. 2021. [Online]. Available: <https://www.nunavut.ca/news/2022/latest-news-its-here-updated-2021-nunavut-draft-land-use-plan-has-been-released-draft-plan>
- 20 COSEWIC, "COSEWIC assessment and status report on the Atlantic walrus, *Odobenus rosmarus rosmarus*, high Arctic population, central-low Arctic population, Nova Scotia-Newfoundland-Gulf of St. Lawrence population, in Canada," COSEWIC, Committee on the Status of Endangered Wildlife in Canada = COSEPAC, Comité sur la situation des espèces en péril au Canada, Ottawa, 2017.
- 21 COSEWIC, "COSEWIC assessment and status report on the caribou, *Rangifer tarandus*, eastern migratory population, Torngat Mountains population, in Canada," Committee on the Status of Endangered Wildlife in Canada, Ottawa, 2017. [Online]. Available: [https://wildlife-species.canada.ca/species-risk-registry/virtual\\_sara/files/cosewic/sr\\_Caribou%20Eastern%20Migratory%20Torngat%20Mountains%20populations\\_2017\\_e.pdf](https://wildlife-species.canada.ca/species-risk-registry/virtual_sara/files/cosewic/sr_Caribou%20Eastern%20Migratory%20Torngat%20Mountains%20populations_2017_e.pdf)
- 22 COSEWIC, "COSEWIC assessment and status report on the caribou, *Rangifer tarandus*, barren-ground population, in Canada," COSEWIC, Committee on the Status of Endangered Wildlife in Canada, Ottawa, 2016. [Online]. Available: [https://wildlife-species.canada.ca/species-risk-registry/virtual\\_sara/files/cosewic/sr\\_Caribou%20Barren-ground\\_2016\\_e.pdf](https://wildlife-species.canada.ca/species-risk-registry/virtual_sara/files/cosewic/sr_Caribou%20Barren-ground_2016_e.pdf)
- 23 Government of Canada, "Marine Mammal Regulations, SOR/93-56, Fisheries Act | Consolidated Federal Laws of Canada, Marine Mammal Regulations," Justice Laws Website, Nov. 02, 2018. <https://laws-lois.justice.gc.ca/eng/regulations/SOR-93-56/page-1.html#h-957801> (accessed Sep. 13, 2022).
- 24 DFO, "Watching Marine Wildlife," Marine mammals and sea turtles, Jun. 25, 2019. <https://www.dfo-mpo.gc.ca/species-especes/mammals-mammiferes/watching-observation/index-eng.html> (accessed Sep. 13, 2022).
- 25 Government of Canada, "Schedule VI, Subsections 7(3) to (4), Approach Distances to Marine Mammals | Consolidated federal laws of Canada, Marine Mammal Regulations," Justice Laws Website, Nov. 02, 2018. <https://laws-lois.justice.gc.ca/eng/regulations/SOR-93-56/page-9.html#h-958101> (accessed Sep. 13, 2022).
- 26 D. Currie, "Polynyas in the Canadian Arctic," Canatec Associates International Ltd., 2014. [Online]. Available: [https://apiwwfarcticse.cdn.triggerfish.cloud/uploads/2022/04/08165253/research\\_polynya\\_report.pdf](https://apiwwfarcticse.cdn.triggerfish.cloud/uploads/2022/04/08165253/research_polynya_report.pdf)



# Hudson Bay Complex Mariners' Guide

- 27 WWF-Canada, "National Vessel Dumping Assessment: Quantifying the threat of ship waste to Canada's Marine Protected Areas | Summary Report," WWF-Canada, Toronto, ON, Canada, Summary Report, Feb. 2022. Accessed: Sep. 13, 2022. [Online]. Available: <https://wwf.ca/wp-content/uploads/2022/03/2022-WWF-NO-DUMPING-SUMMARY-REPORT-EN-2.pdf>
- 28 M. Nacke, "Shipping Through Sea Ice: Impacts on marine habitats and best practices.," Apr. 2017. Accessed: Jul. 19, 2022. [Online]. Available: <https://wwf.ca/wp-content/uploads/2021/02/WWF-MPA-4-Impacts-Marine-Habitat-v4.pdf>
- 29 DFO, Notices to Mariners 1 to 46. Canadian Coast Guard Programs Aids to Navigation and Waterways Fisheries and Oceans Canada, 2022. [Online]. Available: <https://publications.gc.ca/site/eng/363763/publication.html#:~:text=Provides%20detailed%20information%20on%20navigation,plates%2C%20sketches%2C%20and%20charts.>
- 30 J. St. Paul, "Shipping and Marine Wildlife Management Plan. BAF-PH1-830-P16-0024," Baffinland Iron Mines Corporation (Baffinland), Mar. 2016. Accessed: Aug. 09, 2022. [Online]. Available: [https://www.baffinland.com/\\_resources/document\\_portal/baf-ph1-830-p16-0024-r6---shipping-and-marine-wildlife-management-plan\\_2017-01-23-29.pdf](https://www.baffinland.com/_resources/document_portal/baf-ph1-830-p16-0024-r6---shipping-and-marine-wildlife-management-plan_2017-01-23-29.pdf)
- 31 NPLS, "Community Directory - Hunters & Trappers Organization," Community Directory - Hunters & Trappers Organization | NPLS Website. <https://publiclibraries.nu.ca/en/hunters-trappers> (accessed Aug. 12, 2022).