

British Columbia Forage Fish Spawning Monitoring: Citizen Science Methodology

Prepared by: Mount Arrowsmith Biosphere Region Research Institute

October 2018

Revised: June 2020



TABLE OF CONTENTS

1.0	Material Checklist	3
1.1	Fieldwork Checklist	3
1.2	Laboratory Checklist	3
2.0	How to Sample – Step by Step	4 – 10
2.1	Site Assessment	4
2.2	Filling Out the Forage Fish Spawning Habitat Beach Survey Datasheet	4
2.2.1	Location & High Tide Events	4
2.2.2	Samplers	5
2.2.3	Current Conditions	5
2.2.4	Sediment Sample Collection	5
2.3	Sample Collection	7
2.4	Sample Processing	8
2.4.1	Sieving in the Field	8
2.4.2	Sieving at the Office/Laboratory	8
2.4.3	Vortex Method	8
3.0	Laboratory Analysis	10 – 12
3.1	Species	11
3.1.1	Pacific Sand Lance (<i>Ammodytes hexapterus</i>)	11
3.1.2	Surf Smelts (<i>Hypomesus pretiosus</i>)	11
3.1.3	Rock Sole (<i>Lepidopsetta bilinearis</i>)	11
3.1.4	Pacific Herring (<i>Clupea pallasii</i>)	11
3.2	Embryo Validation Process	12
4.0	Data Management	12
4.1	Submitting Data to Sampling Coordinator	12
4.2	Strait of Georgia Data Centre	12
5.0	Building a Vortex Method Unit	12 – 14
5.1	Materials Required	12
5.1.1	For Construction	13
5.2	Material Preparation	13
5.2.1	Body of Vortex	13
5.2.2	Bilge Pump Preparation	13
5.2.3	Blue Bowl Concentrator Preparation	14
5.3	Assembly	14
6.0	Best Practices	15 – 21
6.1	Identifying Suitable Sediment	15
6.1.1	Suitable Sediment: Pacific Sand Lance	16
6.1.2	Suitable Sediment: Surf Smelt	17
6.1.3	Unsuitable Sediments	18
6.2	Forage Fish Sampling Methods	19
6.3	Sample Processing	19
6.4	Laboratory Analysis	20
6.5	How to Safely Use Stockard’s Solution	20
7.0	References	22
	Appendix I – Forage Fish Sampling: Location Codes	23 – 57
	Appendix II – Fisheries and Oceans Canada (DFO) Management Areas	58 – 80

1.0 MATERIAL CHECKLIST

1.1 Fieldwork Checklist

Sample Collection

- Data sheets/clipboard
- Pencils
- Sample site document for designated area
- Tide tables (current and previous day)
- Camera
- Thermometer
- Measuring tape x2
- GPS unit (optional)
- Scoop (500 mL)
- 4 L Sample containers
- Sample tags

Sample Processing

Sieving Process

- 5 gallon bucket with holes in the bottom
- Sieves – 4.0 mm, 2.0 mm, 0.5 mm
- Water buckets
- Water pitcher (optional)
- Plastic tub(s)
- Sample jar(s)
- Nylon brush
- Hose for water

Vortex Process

- 68 litre tote
- Bilge pump with hose and quick connectors
- Nylon stocking and an elastic
- Blue Bowl with stands
- 0.5 mm sieve
- 12 V marine battery
- Shims
- Turkey baster
- Big plastic spoon
- Small plastic spoon
- Rubber spatula
- Wash bottle (optional)
- Stockard's solution
- MSDS Sheet for Stockard's solution

1.2 Laboratory Checklist

- Dissecting microscope
- Petri dishes
- Small spoon
- Pipette
- Fine point forceps
- Corresponding datasheets
- Vials
- Stockard's solution
- MSDS Sheet for Stockard's solution

2.0 HOW TO SAMPLE – STEP BY STEP

2.1 Site Assessment

1. Assess the area based on sediment type, with Pacific sand lance preferring medium sandy sediments 0.25 mm to 0.5 mm, with spawning also documented in coarse sand and fine pebble sediments 1.0 mm to 7.0 mm in diameter. Surf smelt prefer a sand and pea gravel combination, 1.0 mm to 7.0 mm. The landward boundary of the spawning area is the ‘high tide mark’, typically identified by a seaweed line, and the seaward boundary is where there is a change in sediment type, becoming larger in size, or is simply at a lower elevation if there is no change in sediment type. *Note: See section 6.0, Best Practices, for images of preferable sediment types.*
2. Lay out the 30 m measuring tape through the middle of the suitable substrate for forage fish spawning habitat/activities.
3. Many of the sampling sites in your area are likely to have been previously visited. Check the *Sample Site* document that corresponds to the area. If the beach location is in the document, you can follow the landmark description in order to return to the previously sampled site.
4. Lay the 30 m measuring tape down in the same location where the last sampling activities took place. Be sure to lay the 30 m measuring tape below the highest tide mark, which could be either the last high tide or second effective high tide line (see section 2.2.1 for descriptions of ‘last high tide’ and ‘second effective high tide’) – this means that the landmark distance will differ from that of the previous sample. Ideally, the measuring tape will be laid approximately 0.5 m to 1 m in elevation below the foreshore features (log line, dune grass, etc.). It is important to lay the measuring tape below the highest water mark, usually identified by a line of beach wrack (washed up seaweed), because the forage fish could not move further up the beach than what the recent high tides would allow.
5. In the event that the landmark location does not have ideal sediment, as it is subject to change with wind and wave action, identify a nearby location along the beach that has the suitable sediment type. Lay out the measuring tape approximately 0.5 m to 1 m in elevation below the foreshore features (log line, dune grass, etc.).

2.2 Filling out the Forage Fish Spawning Beach Survey Datasheet

2.2.1 Location & High Tide Events

1. Use the *Location Code* document for Vancouver Island, fill out the regional district, as well as the municipality and/or electoral area that the sample site falls within. For the beach code use the first letter of each word in the name of the beach or the first two letters of the beach’s name if it is only one word. For example, the code for ‘Community Park Beach’ would be ‘CPB’, whereas the code for ‘Morningside Beach’ could be ‘MOR’.
2. Review Fisheries and Oceans Canada (DFO) management areas to note the fisheries management area in which you are sampling in.
3. In the case for those locations that have sample sites established, use the document that showcases each of the sites; it has the location and DFO areas noted for each beach.
4. Finally, use the tide tables that you have printed off for that day and region to identify the ‘Last High Tide’, referring to the most recent high tide event, and ‘Second Effective High Tide’, which refers to a high tide that occurred the previous day that reached an elevation greater than or equal to the last high tide. Record the date, time, and elevation of each respective event, if applicable.

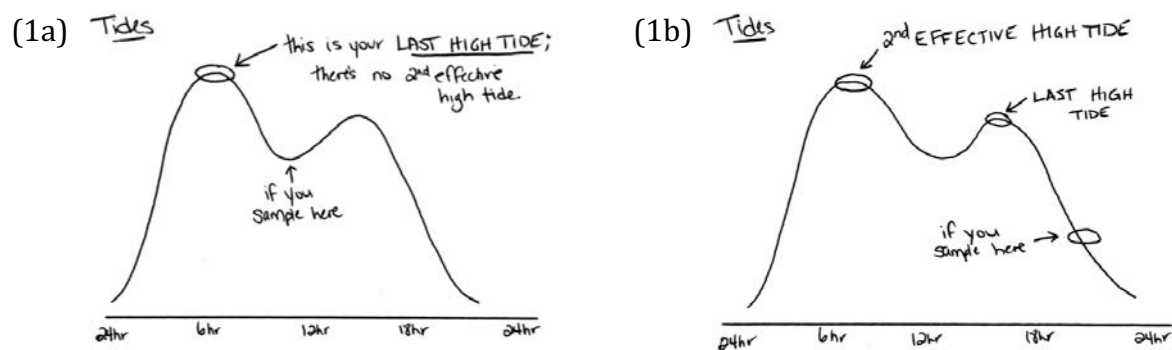


Figure 1. Explanation of tides that occurred prior to the time of sampling: (1a) last high tide, and (1b) second effective high tide.

2.2.2 Samplers

5. Record the sampler's name(s) and affiliated organization, if applicable.
6. Record the date and time of the sample collection, as well as the identification number/name of the camera that you are using to take photos.

2.2.3 Current Conditions

7. Use the closest weather station to your location to record the air temperature, wind direction, and wind speed. Remember that winds are named after the direction they are coming from. *Note: Weather Underground (wunderground.com) is a useful website/app to use. Additionally, any locally accurate weather stations for your area can be used to record the current conditions.*
8. Using the thermometer, record the temperature of the water at the deepest depth you are able to reach safely; be sure that the water you place the thermometer in is not stagnant (i.e., tide pools).

2.2.4 Sediment Sample Collection

9. Record your beach station number, sample number, and time at which you are sampling. *Note: Sample areas are only 30 m by 5 m, therefore there is a possibility that more than one sample can be taken from a single beach station.*
10. If you do not have a GPS unit, record the UTM coordinates of your location from the *Sample Site* document. Be sure to note if where the sample is being collected is different than what is identified in the document and provide some direction as to how it varies.
11. If you do have a GPS unit, go to the 15 m mark along your 30 m measuring tape and record the UTM coordinates.
12. Using the 'Field Observation Sampling Codes', found on the back of the datasheet, choose the dominant beach sediment type. If there is a mix of sediments on the beach, identify which sediment type is dominant in the 30 m by 5 m sampling area. It can be noted in the comments section at the bottom of the datasheet if there was a mix of sediment sizes. The sediment type should be approximated using the sediment grain size card.
13. Using the 'Field Observation Sampling Codes', identify the character of the backshore, which refers to how impacted the area above the beach station is as a result of human development.
14. With the second tape measure, measure the width of the potential forage fish spawning habitat. The width typically stretches from the highest tide mark (either last high tide or second effective high tide), usually determined by a line of washed up seaweed, approximately 0.5 m in elevation below the foreshore features (log line, dune grass, etc.), down to the area that has a notable change

in sediment. *Note: If the beach has completely uniform sediment from top to bottom, the width will extend only a few metres in vertical elevation.*



Figure 2. Identifying the ‘width’ of the beach that is suitable for forage fish spawning activities in the upper intertidal zone.

15. The length of the potential forage fish spawning habitat is referring to the length of beach that contains the suitable sediment. In order to keep this simple, record if the extent of the beach with suitable sediment is greater than (>) or less than (<) 100 m. *Note: If the length of potential spawning beach is greater than 300m it is a good idea to establish a second beach station at this site.*
16. Record the ‘Landmark Object’ that you have chosen to measure your 30 m measuring tape from. The object must be a permanent, unmovable object at the top of the beach, along the backshore.
17. You will measure the distance between the 30 m measuring tape, at the 15 m mark, and the chosen landmark. Be sure that the measurement is perpendicular to the measuring tape. Record this measurement in the ‘Landmark Distance (m)’ column. *Note: Sometimes the landmark does not line up with the 15 m mark. Therefore, be sure to measure the distance of the landmark to the measuring tape perpendicularly. Record in the comment section where on the measuring tape the landmark was measured from and what end of the beach the 0m mark is located. For example, ‘the landmark was measured from the 24 m mark and the 0m mark was at the west end of the beach.’*

18. Using the 'Field Observation Sampling Codes', record how shaded the sample site is. *Note: This measurement considers a seasonal and daily average for the site.*
19. There are two sediment samples that can be collected:
 - a. A 'Bulk' ("B") sample is a 4 L sediment sample that is collected when no embryos are evidently present at the site. This is the most common type of sample to be collected.
 - b. A 'Scoop' ("S") sample requires the collection of approximately 500 mL of sediment. This method is used when embryo masses are visible on the beach. This will ensure species identification and minimal collection of embryos, reducing the overall impact.
20. Each site requires six photos to be taken, including one of the completed sample tag, one of the sediment next to an object for size comparison (use the sediment grain card), one of the beach backshore, beach right, beach foreshore, and beach left. Ensure that you move, as necessary, to get representative photos of the foreshore and backshore. If multiple samples are collected at a single beach station only the photo of the sample tag and sediment are required for each subsequent sample. *See section 2.3 for how to complete a sample tag.*
21. Finally, include any additional comments regarding the site(s), or objects/wildlife you observed at the site in the "Comments" section at the bottom.

2.3 Sample Collection

1. Fill out a sample tag, including the date, location (beach code), sample station, and sample number.
2. You will need a 4 L plastic container, a filled out sample tag, and the 500 mL scoop.
3. Your sample area is 30 m by 5 m – therefore, it runs down the entire length of the 30 m measuring tape and 2.5 m on either side of it, towards the foreshore and backshore.
4. Place the sample tag into the 4 L sample container. The sample tag will follow the sample from this point forward, all the way to the lab analysis.
5. Using the scoop and container, you will collect 4 L of sediment from the sample area, identifying the most ideal sediments along the 30 m measuring tape to collect. Be sure to collect a representative sample, spreading out along the measuring tape where the sediment is being collected; collect approximately half of the sample from above the measuring tape and the other half from below. *Note: This is biased sampling. Density counts are not being determined from this sampling method, simply presence and non-detection.*

Date:	12/14/19
Location:	SEB
Beach Station #	1
Sample #	1

Figure 3. Sample tag.



Figure 4. Sampling requires the collection of a 4 L sediment sample: (4a) and (4b) depict a sample container that is not filled to 4 L, while (4c) and (4d) show what a full sample container should look like.

6. Rinse the scoop after every sample collected to avoid cross contamination between samples.

Note: If bulk samples cannot be processed immediately, they should be stored in 0.5°C to 7°C, such as a fridge, for up to 7 days; this will aid in reducing the rate of decomposition and embryo mortality.

2.4 Sample Processing

It is possible to complete the next steps either in the field or back at the office and/or laboratory, each requiring specific equipment:

2.4.1 Sieving in the Field

1. You will need a 5-gallon bucket with holes drilled in the bottom, three stackable sieves (4.0 mm, 2.0 mm, and 0.5 mm), a water bucket, a wash bucket, and a sample jar.
2. First, ensure that the sieves are stacked in the appropriate order from largest to smallest with the smallest being on the bottom. Then place the sieves on top of the 5-gallon bucket and add the sample into the top sieve. Transfer the sample tag into the sample jar and ensure that this stays with the sample throughout the rest of the processing.
3. This is a two-person job – the first person will be collecting water to pour over the sample while the second person is responsible for shaking the sediment through the sieves.
4. Once the sample is fully washed through the sieves, transfer the sample from the 0.5 mm sieve into the wash bucket, this is the sample that you will process using the vortex method. *Note: The sediment left in the 4.0 mm and 2.0 mm sieves can be disposed.*
5. Ensure you clean the sieves using the nylon brushes, and rinse out the buckets after each sample, avoiding cross contamination between samples.



Figure 5. Research assistants sieving sediment samples.

2.4.2 Sieving at the Office/Laboratory

6. Follow the same method as stated above in 'Sieving in the Field,' but instead of one person collecting water to pour over the sample, a hose can be used to wash the sample through while the other person shakes the sieves.
7. Ensure that you have collected the sample from the 0.5 mm sieve in a wash bucket, as well as clean the sieves and 5-gallon bucket between each of the sieving events.

2.4.3 Vortex Method

Note: Vortex method instruction discussed below is adapted from WDFW's published methods (Dionne, 2015), which can be found here: <https://wdfw.wa.gov/publications/02022>.

8. Ensure the nylon stocking is secured around the bilge pump using an elastic.
9. Fill the 68 L tote with 3 to 4 buckets of water, the hose, or until it is half full.

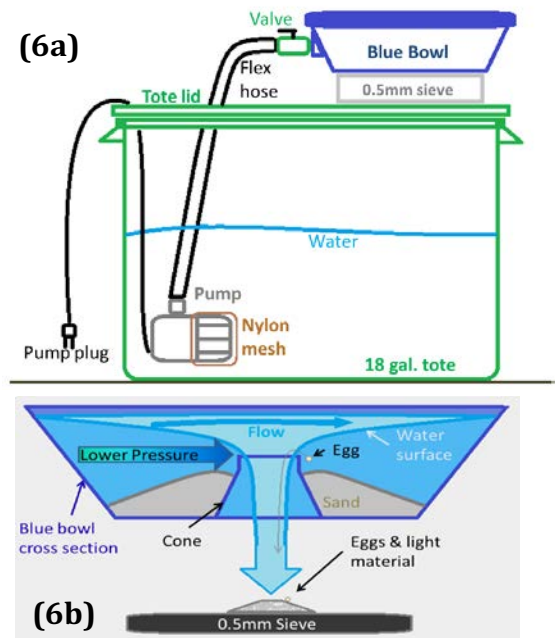


Figure 6. Vortex method explanation: (6a) vortex kit set-up and (6b) how the vortex is generated (Dionne, 2015).

10. Put the tote lid back on and feed the bilge pump through the smaller hole, ensuring that the alligator clips and the flex hose stick out and the pump is fully submerged.
11. Rest the 0.5 mm sieve over the larger hole and place the blue bowl on top of that. Make sure that the sieve and blue bowl are as level as possible – use shims to level it if necessary.
12. Connect the bilge pump's hose to the blue bowl. Before you attach the battery clamps to the 12V battery, ensure that the valve on the blue bowl is open – it should never be closed when the pump is running, it will cause the hose to burst. Refer to section 5.0 to build a vortex kit of your own if you do not have one.
13. Attach the battery clamps to the battery and allow the blue bowl to fill with water. *Note: Always connect the positive cable first, followed by the negative cable.*
14. Add the sediment sample to the blue bowl. The water should be approximately 1 to 2 cm from the top of the bowl after the sediment has been added.
15. Add the entire sample to the blue bowl, ensuring that you rinse out the wash bucket as well. *Note: If you have a very large sample that will overflow the raised centre be sure to process the sample in multiple portions.*
16. Once the sample is in the bowl, use the spatula and small spoons to agitate the sediment starting at the centre and moving the sediment towards the outer rim, for 3 minutes – this will release the lighter materials, such as embryos and organic matter. These lighter materials will be carried by the water vortex through the raised centre and be collected in the sieve below.
17. After agitation, let the water run for another minute, allowing the vortex to collect any of the last material.
18. When you are ready to shut off the bilge pump, you will need to close the valve attached to the blue bowl and disconnect the battery clamp simultaneously. Closing the valve will ensure that sediment doesn't get sucked back into the bilge pump. *Note: Always remove the negative cable first, then the positive cable.*
19. Using the baster, collect the sediment that is directly beside the raised centre of the blue bowl. This action will ensure that any final organic materials that didn't make it over the rim will be included in the sample.
20. Wash the final sample that was collected in the 0.5 mm sieve, into a sample jar. *Note: Try to limit the amount of water entering into the sample jar.*
21. If your coordinating group (MABRRI, Peninsula Stream Society, etc.) asks you to add Stockard's solution to your sample, do so at this time.
 - a. Using a pipette, do your best to remove the top layer of water in the sample jar.
 - b. In a well ventilated area and wearing gloves and safety glasses, add enough Stockard's solution to cover the sediment sample.
 - c. The sample can then be stored at room temperature until your coordinating group is able to pick up the sample. *Note: Your coordinating group may request you do not add Stockard's solution. Be sure to check in with them with regards to their preference.*
22. Between samples, wash the sieves with a nylon brush and rinse out the blue bowl.



Figure 7. Depicting how to agitate the sediment in the blue bowl.

23. When finished, rinse all of the equipment, including the nylon stocking. Additionally, rinse the bilge pump in fresh water. This is especially important if you used salt water to process the samples. The salt water will take a toll on the equipment over time.

3.0 LABORATORY ANALYSIS

Note: It is up to the citizen scientists whether or not they would like to take on the task of laboratory analysis. If not, ensure that they are passed onto the coordinating group (MABRRI, Peninsula Stream Society, etc.) to be analyzed in the laboratory for embryos.

1. Each sample should be analyzed separately, ensuring no cross contamination.
2. Using a small spoon, take a very small amount of your sample and spread it thinly in a petri dish. Creating a single layer, rather than a thick layer of sediment, along the bottom of the petri dish is the best technique and will reduce the possibility of missing embryos.
3. Comb through the entire sample using the dissecting microscope.
4. Whenever you think that you have found an embryo, use a pipette to transfer it gently into another petri dish.
5. Be sure to separate all of the embryos that you find from the sediment for further analysis. If there are embryos present, you will document:
 - [1] the species,
 - [2] the number of each species, and
 - [3] the alive to hatched/dead ratio of each species.

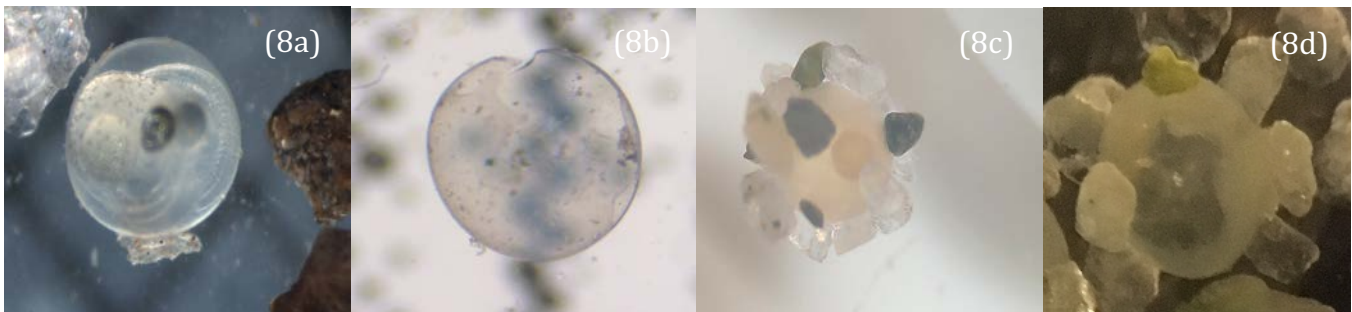


Figure 8. Embryos that are alive vs hatched/dead. Figures (8a) and (8b) show surf smelt embryos alive and hatched, respectively (Brian Koval, Peninsula Stream Society, 2019). Figures (8c) and (8d) show Pacific sand lance embryos alive and hatched, respectively.

If there are more than 100 embryos, you are only required to stage the first 100. All of this data is to be documented on the data sheet.

6. After analysis, the embryos that are found should be transferred to vial and preserved in Stockard's solution. Be sure you are in a ventilated area and wearing gloves and safety glasses when using the Stockard's solution. You will pipette the solution from the bottle into the sample vial with the embryos; you only need enough solution to cover the embryos.

3.1 Species

There are four potential fish species that you are likely to see when sampling, including:

3.1.1 Pacific Sand Lance (*Ammodytes hexapterus*)

- Embryos are 0.8 mm to 1.0 mm in diameter
- Have multiple sand grains attached
- Not completely round
- Milky colour
- There is 1 large oil droplet in the yolk

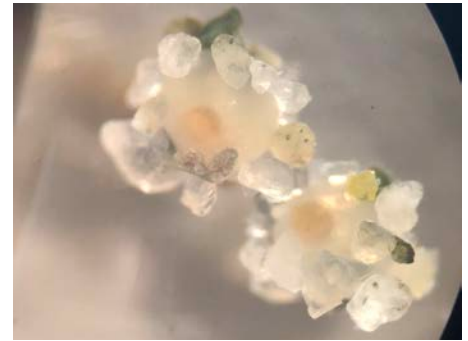


Figure 9. Pacific sand lance embryos.

3.1.2 Surf Smelt (*Hypomesus pretiosus*)

- Embryos are 1.0 mm to 1.2 mm in diameter
- The embryo will only be attached to the sediment at a single point, where the membrane has ruptured and folded back, exposing an adhesive attachment point, called the 'peduncle'
- Non-self-adhesive – they do not attach to other embryos



Figure 10. Surf smelt embryos (Brian Koval, Peninsula Stream Society, 2019).

3.1.3 Rock Sole (*Lepidopsetta bilinearis*)

- Perfect sphere
- Very transparent
- Does not attach to sediment – no attachment sites
- Non-adhesive

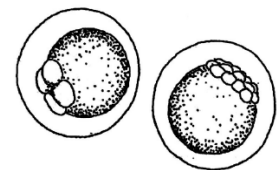


Figure 11. Rock sole embryos (Moulton & Penttila, 2006).

3.1.4 Pacific Herring (*Clupea pallasii*)

- Embryos are 1.3 mm to 1.5 mm in diameter
- Almost entirely spawn on marine vegetation
- They have distinct shell attachment sites
- Often found in layers or clumps

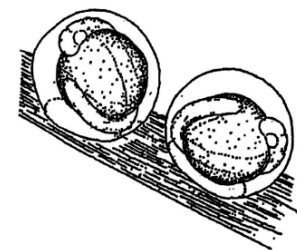


Figure 12. Pacific herring embryos (Moulton & Penttila, 2006).

3.2 Embryo Validation Process

Whenever embryos are detected in samples, they will need to be confirmed by an expert prior to submission of results to the database. Be sure to provide your coordinator with all of the materials associated with the sample, including datasheet and photos. Once the coordinator has all the required materials and photos of the embryos, they will send these off for confirmation to an expert in either British Columbia or Washington State. Your coordinator will keep you informed with regards to the results of your samples.

4.0 DATA MANAGEMENT

4.1 Submitting Data to Sampling Coordinator

The coordinating groups will be gathering and compiling all of the data collected by the citizen scientists for submission to the Strait of Georgia Data Centre. Be sure to provide the coordinator(s) with all the materials associated with the sample(s) you collected, including datasheet(s) and photos.

Note: It is good practice to keep a copy of the data you collected. Be sure to either take a photo of the submitted datasheet or send a photo/scan of the datasheet to your coordinator.

4.2 Strait of Georgia Data Centre

The coordinating groups will submit all compiled data to the Pacific Salmon Foundation's Strait of Georgia Data Centre, an open-access database hosted by the University of British Columbia. All data with regards to forage fish in the Salish Sea will be stored in this database, allowing for anyone interested in the data to access it. You can access the database from this link: <http://sogdatacentre.ca/>.

5.0 BUILDING A VORTEX METHOD UNIT

5.1 Materials Required

- 68 litre tote with lid
- Water bucket
- Blue bowl concentrator
- An adjustable hose valve
- 750 to 1000 GPH submersible electric water pump
- Alligator clips
- Nylon stockings and an elastic
- 60 cm length of ¾" corrugated hose
- ¾" male hose fitting
- 2 x ¾" hose clamps
- Quick connect hose fittings
- 0.5 mm Sieve
- Wash tub
- Shims
- Rubber spatula
- Large plastic spoon
- Small plastic spoons
- Baster

- Nylon brush
- Wash bottle (optional)
- Metal hangers (optional)
- 12 V marine battery

5.1.1 For construction

- Box cutter
- Permanent marker
- Electrical tape

5.2 Material Preparation

5.2.1 Body of the Vortex

1. Cut two holes in the tote's lid: one smaller one in the top corner for the flex hose and battery clamps to come out of and one larger round one that the 0.5 mm sieve will sit on. You will have to customize this hole to ensure that your sieve will not fall through. *Note: It is suggested you draw the holes with a marker prior to cutting, ensuring that the holes will not be too big.*



Figure 13. Holes cut into the tote lid for the vortex kit (Dionne, 2015).

5.2.2 Bilge Pump Preparation

2. Connect the bilge pump to one end of the corrugated hose using one of the hose clamps.
3. Insert the 3/4" male hose fitting into the other end of the corrugated hose and secure it with the second hose clamp.
4. Add one of the quick connector fittings to the male hose fitting on the corrugated hose.
5. Using pliers, attach the alligator clamps to the bilge pump cables. Be sure to connect the clamps to the appropriate cables.
6. Stretch the nylon stocking over the pump's water intake and secure in place with an elastic. The stocking ensures that if any embryos are lost in the tote, they will not pass through the pump and into the blue bowl, potentially cross contaminating samples if multiple are being processed. *Note: Be sure the nylon stocking is tight so the stocking does not get sucked in when the pump is turned on.*



Figure 14. Bilge pump preparation: (14a) identifies the materials that will be required to prep the bilge pump and (14b) depicts how the bilge pump should look when put together.

5.2.3 Blue Bowl Concentrator Preparation

7. Add the second quick connector fitting to the blue bowl concentrator.
8. Prepare 'legs' for the blue bowl by cutting the metal hangers with wire cutters and folding the ends of the metal hangers back. *Note: The blue bowl concentrators come with 'legs', however they are typically too small and result in the blue bowl slipping off of the sieve. Therefore, it is recommended to build these longer 'legs' to ensure the sample being processed does not slip off.*

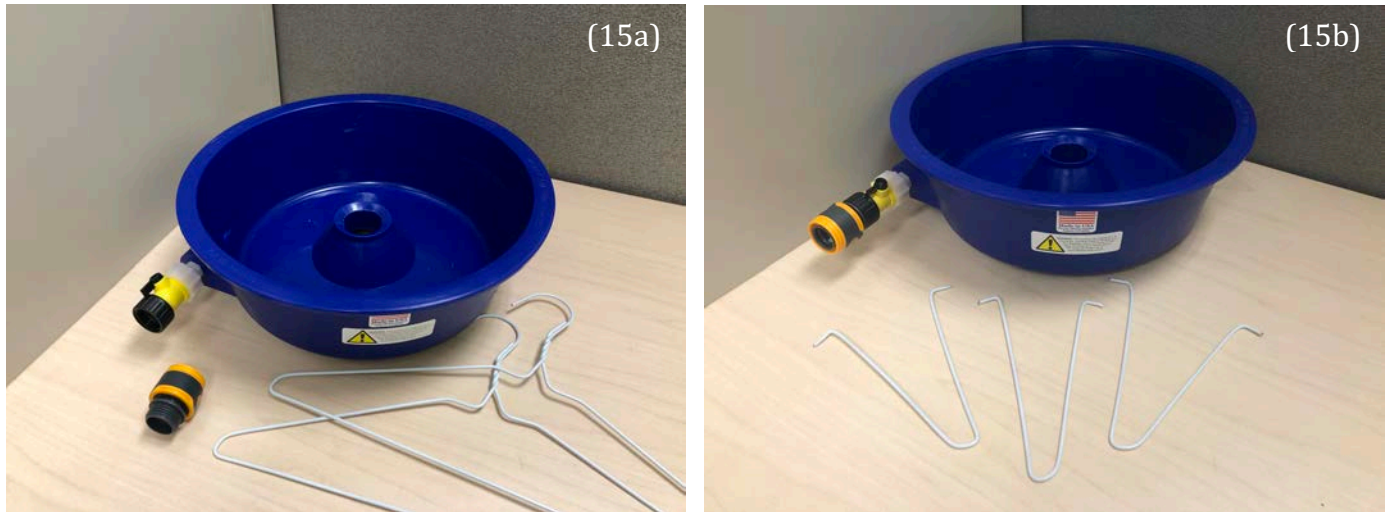


Figure 15. Blue bowl concentrator preparation: (15a) identifies the materials that will be required to prep the blue bowl and (15b) depicts how the blue bowl should look when put together.

5.3 Assembly

9. On a level surface, fill the tote half full of water, place the bilge pump in the tote, and secure the tote's lid, feeding the alligator clamps and corrugated hose through the "pump hole."
10. Set the 0.5 mm sieve over top of the "water return hole" and stack the blue bowl on top of the sieve, extending the 'legs' so it sits level.
11. Attach the corrugated hose to the blue bowl using the quick connector fittings. The final product should appear like Figure 16.
12. Follow the sediment processing details under the "Sample Processing – Vortex Method."

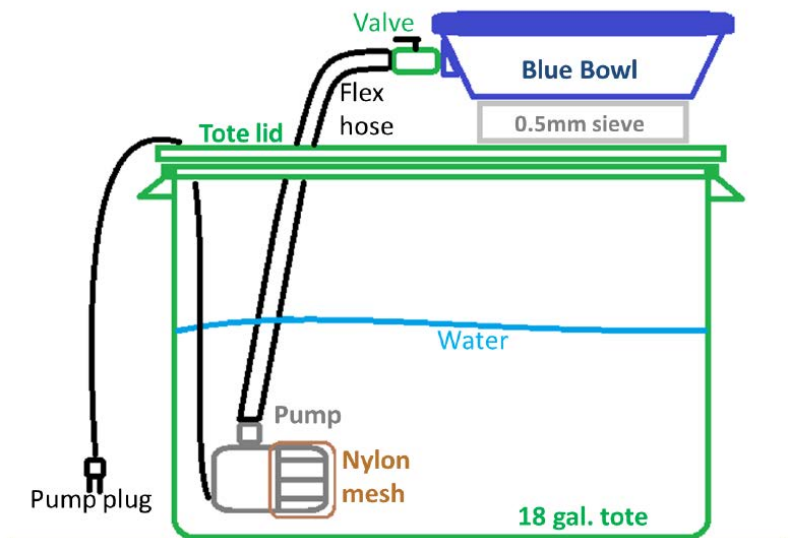


Figure 16. How to set up a vortex kit set-up (Dionne, 2015).

6.0 BEST PRACTICES

6.1 Identifying Suitable Sediment

When selecting spawning habitat, different species of forage fish have different preferences for different sediment types. It is not uncommon that there is a lot of broken shell material mixed in with the sand and gravel. Do not try to avoid the shell materials as forage fish embryos can attach to the shells, as they are the same size as their favourable sediments.

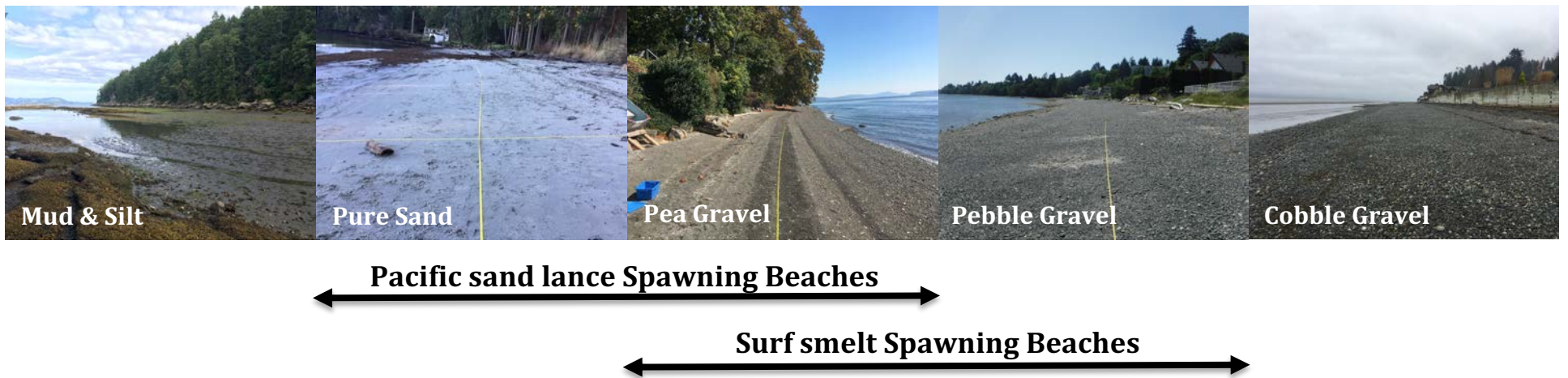


Figure 17. Identifying which beaches are preferable for Pacific sand lance and surf smelt to use for spawning.

6.1.1 Suitable Sediment: Pacific Sand Lance (PSL)

Pacific sand lance spawn from November to mid-February and prefer medium sand 0.25 mm to 0.5 mm in diameter, with spawning also documented in coarse sand and fine pebble sediments from 1.0 mm to 7.0 mm in diameter.



Figure 18. Pure sand: preferable sediment for PSL spawning (to scale).

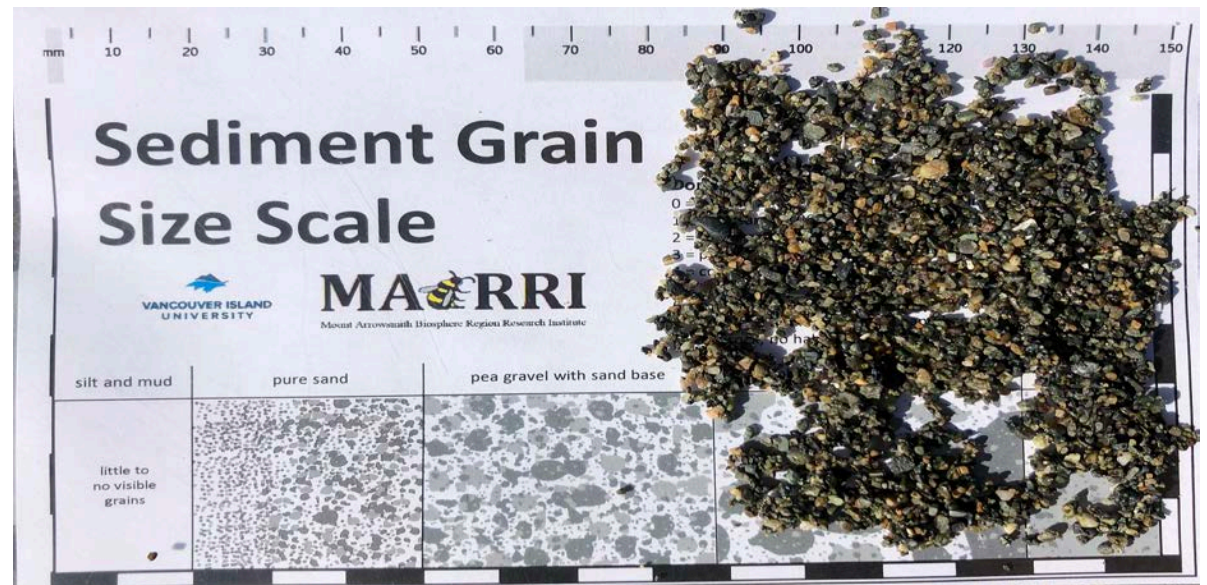


Figure 19. Pea gravel with sand base: preferable sediment for PSL spawning (to scale).

6.1.2 Suitable Sediment: Surf Smelt (SS)

Surf smelt spawn have been found to spawn year-round in coarse sand to fine pebble sediment mixes ranging from 1.0 mm to 7.0 mm in diameter.

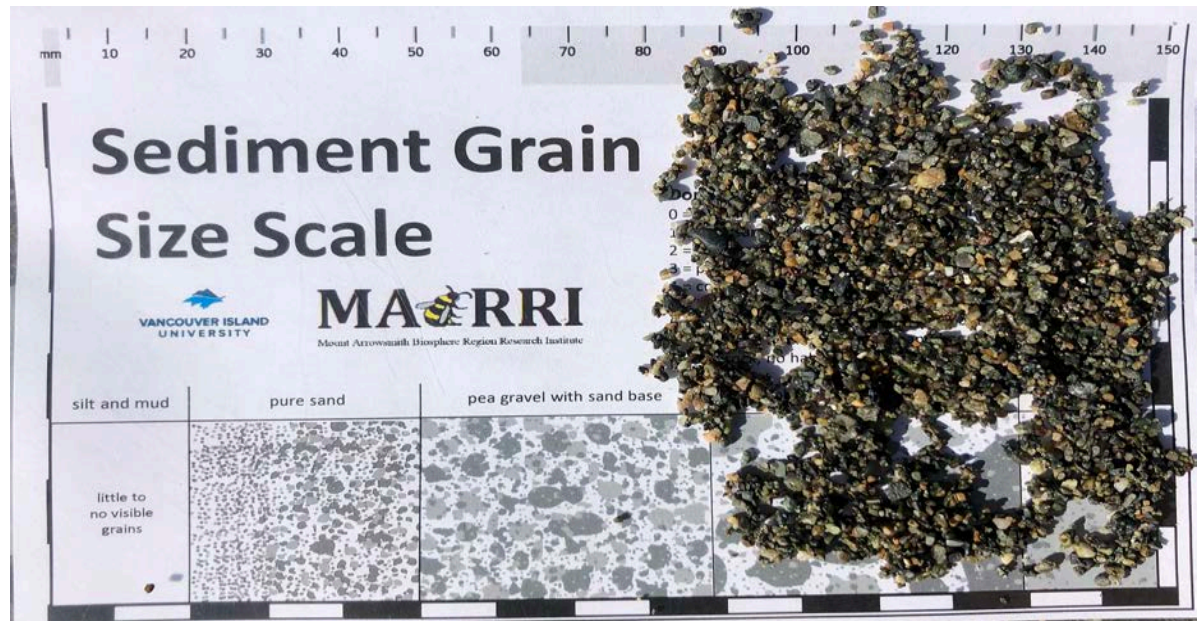


Figure 20. Pea gravel with sand base: preferable sediment for SS spawning (to scale).

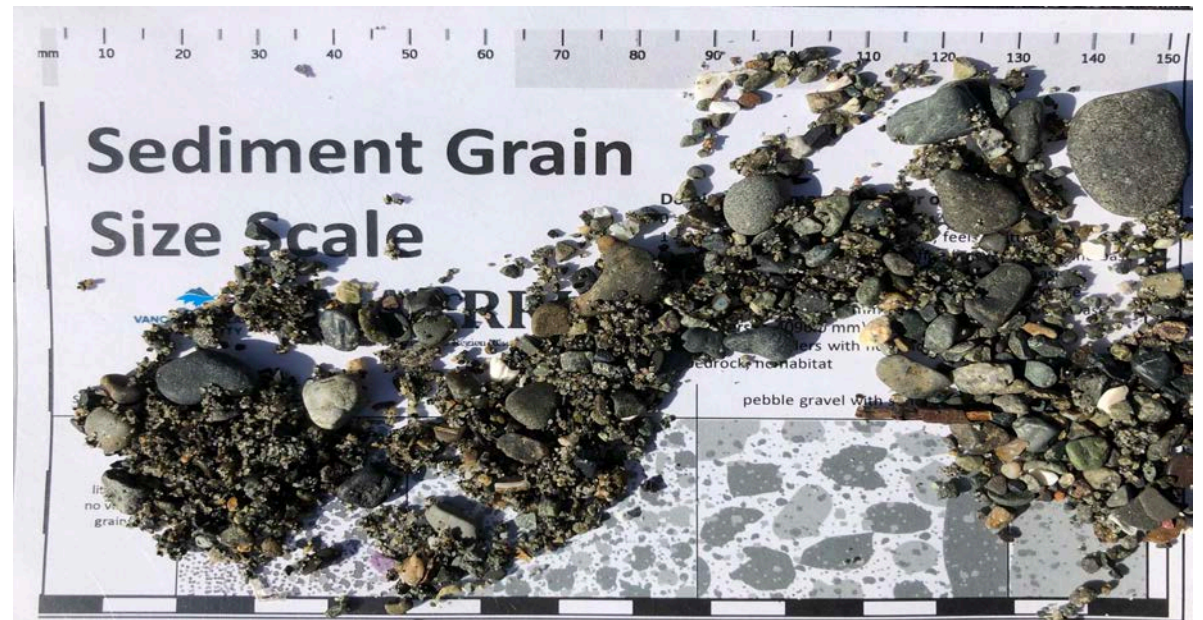


Figure 21. Pebble gravel with sand base: preferable sediment for SS spawning (to scale).

6.1.3 Unsuitable Sediments

Some of the sediments that beaches consist of are not suitable for Pacific sand lance and surf smelt to spawn on. Large cobble not ideal; although forage fish embryos can attach to this larger sediment, they are less likely to survive. Additionally, mud and silt is too fine and compact, making it difficult for respiration to occur and increasing the likelihood of embryo smothering.

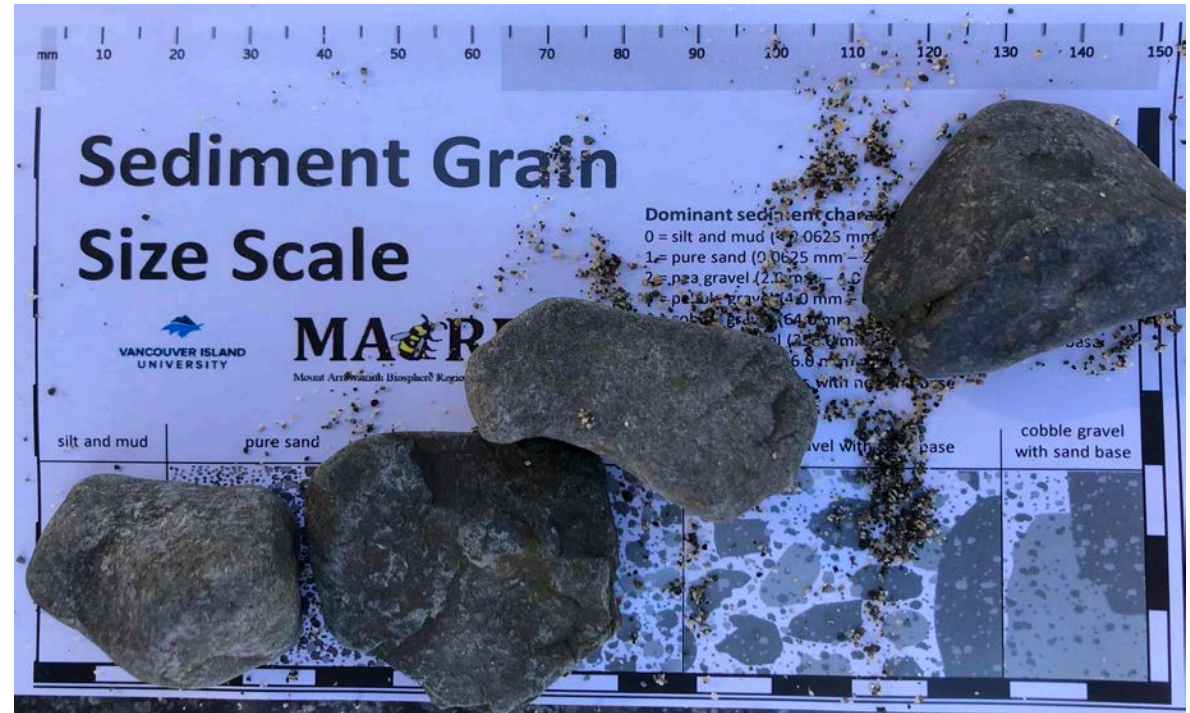


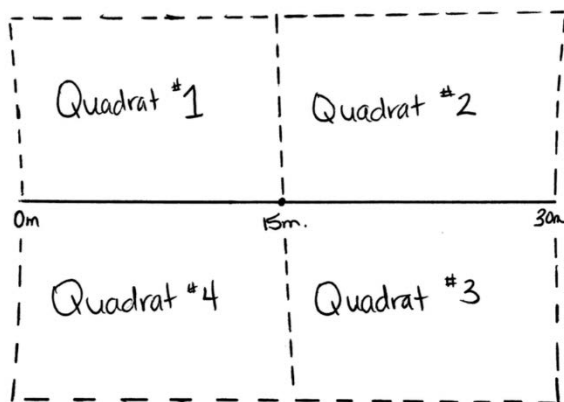
Figure 22. Cobble gravel with a sand base: unsuitable sediment for PSL and SS spawning (to scale).

6.2 Forage Fish Sampling Methods

A few things to consider when sampling:

- Select the most ideal looking sediment. Sampling those sediments that are approximately 0.2 mm to 7.0 mm in diameter will provide you with the greatest potential of capturing a spawning event. This is biased sampling, but these protocols are used to determine where and when surf smelt and/or Pacific sand lance are spawning in British Columbia. Therefore, the data collected will indicate presence or non-detection.
- When investigating a beach's sediment composition, be sure to move some of the top layer of larger sediment or seaweed out of the way to determine if:
 - the ideal sediment identified on the surface is a few centimeters thick and not just a small layer situated ovetop larger cobble sediments; or,
 - the not ideal sediment (i.e., larger cobble) identified does not have a layer of ideal sediment below it before moving on to the next beach. *Note: When sampling you can move the top layer of sediment and scoop the ideal sediment below. This can be done because when spawning occurs, the wave action moves the embryos around, allowing them to settle down under the larger sediment.*
- When collecting the sediment, do your best to get a representative sample of the entire sample area (30 m by 5 m). A simple way to do this is to mark the 15 m mark along the 30 m measuring tape and envision that your area is divided into 4 equal quadrats, each 15 m by 2.5 m (see below). By doing this you can collect approximately 25% of your sample from each section.

(23a)



(23b)



Figure 23. An example of how to visualize the sampling area to collect the representative sample: (23a) breaking the 30 m by 5 m into quadrats, and (23b) the quadrats drawn out on a beach.

Note: If a portion of your sample area has non-ideal sediment (bedrock, large cobble, mud, or silt), do your best to get an equal amount of sediment from each of the ideal sections.

6.3 Sample Processing

A few things to consider when processing your sample(s):

- When transferring the sample from the sieve to the wash tub in the field, pour the water through the back of the sieve and slowly rotate the sieve to ensure the entire sample has been transferred.

Note: When using a hose, it is still easiest to spray the sieve from the backside to transfer the entirety of the sample into the wash tub.

- When sieving in the field, you can use a water pitcher instead of a large water bucket to reduce physical ailments, as well as have better control of the water flow.
- If you still retain a very large sample after you have processed your sample through the sieves, it is best to process the sample in multiple 'batches' through the vortex kit; this will enable the greatest amount of the preferential sediments to be collected.
- When you have completed both processing steps, sieves and the vortex kit, and you are transferring your sample into a jar, it is best to first scoop the bulk of the sediment into the jar with a small spoon (rather than using water to coerce your sample into the jar). If you use water from the start, there is the potential that your jar will overflow, which may result in losing some of your sample.
- Be sure to clean all your gear between samples (i.e., sieves, blue bowl, buckets, baster, spoons, etc.) to prevent cross contamination.
- If you use salt water to process your sample, be sure to rinse all of your gear with fresh water as soon as possible, including flushing the bilge pump.

6.4 Laboratory Analysis

A few things to consider when analyzing your sample(s):

- Drawing grid lines or a set of circles on the bottom of the petri dish can aid in distinguishing where in the petri-dish you have already looked
- When putting sediment into the petri dish to analyze, be sure to only put in a very small amount to make a single layer of sediment. If sediments are stacked on top of one another, processing them takes longer and it is less likely that you will see the embryos mixed in amongst the sediment.
- Look for movement in the petri dish when moving it around. The embryos sway in the water when the dish is moved around, while the sediment will remain steady.
- When you think you have found an embryo, use the forceps to gently squeeze it – this will ensure that it is not a rock or a piece of plastic.
- If the sample is not in preservative, be sure to keep it in a cool place (i.e. fridge) and analyze your samples within seven days.

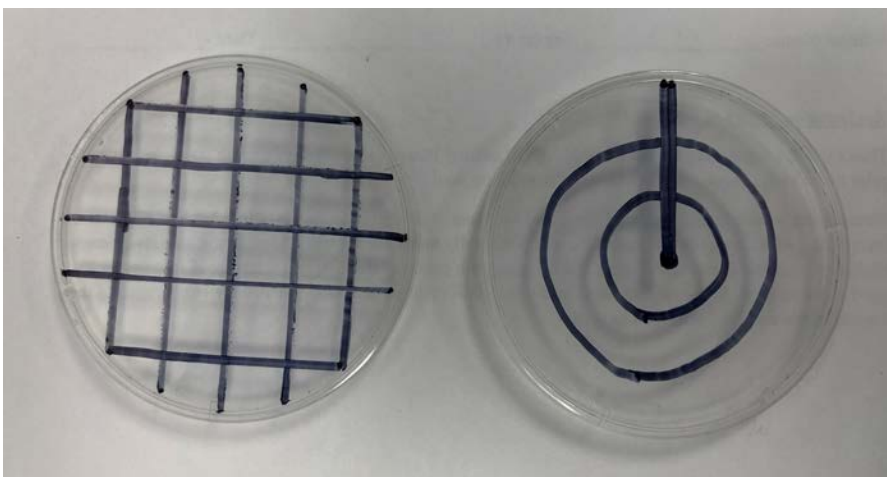


Figure 24. Petri dishes with grid lines and circles to aid in analysis process.

6.5 How to Safely Use Stockard's Solution

Although Stockard's solution is more potent than ethanol, there are some benefits to using it. It is recommended that Stockard's solution be used because ethanol can bleach and desiccate the embryos, making species identification difficult. Additionally, when the embryos are preserved in Stockard's solution than can be stored for years and can be used for educational purposes.

Although it is preferred that the preservative be used by the coordinating group, there will be a few instances when it will be preferable that citizen scientists are the ones to administer the Stockard's solution. Therefore, there are a few things to consider when using it:

- Ensure to have the MSDS sheet on hand
- Recommended to have WHMIS training
- Be sure to be in a well ventilated space (ex. outside) and wearing gloves and safety glasses when using
- Use a pipette to transfer the Stockard's solution into the jar or vial in a controlled fashion
- When filling the sediment or embryos, only add enough solution to fully cover them
- Provide all Stockard's solution to the coordinating group to ensure that proper waste disposal protocols are followed.

7.0 REFERENCES

A variety of documents and resources were used to produce this manual, including:

Dionne, P. (2020). Personal communication.

Dionne, P. (2015). Vortex method for separation of forage fish eggs from beach sediment. Washington Department of Fish and Wildlife, 1-14.

Fisheries and Oceans Canada (DFO). (2002). Surf smelt: Stock status report B6-09(2002). Retrieved from <https://waves-vagues.dfo-mpo.gc.ca/Library/345799.pdf>

Koval, B. (2019). Images of embryos.

Meisel Rock Products. (2015). Sand and gravel uses. Retrieved from <http://www.meiselrockproducts.com/sand-and-gravel-uses/>

Moulton, L.L. & Penttila, D.E. (2006). San Juan County forage fish assessment project: Field manual for sampling forage fish spawn in intertidal shore regions. Retrieved from the Washington Department of Fish & Wildlife.

Robards, M.D., Piatt, J.F., & Rose, G.A. (1999). Maturation, fecundity, and intertidal spawning of Pacific sand lance in the northern Gulf of Alaska. *Journal of Fish Biology*, 54, 1050-1068.

Robinson, C. (2020). Personal communication.

Swanpark. (2019). White pea gravel. Retrieved from <http://swanpark.site/white-pea-gravel/>

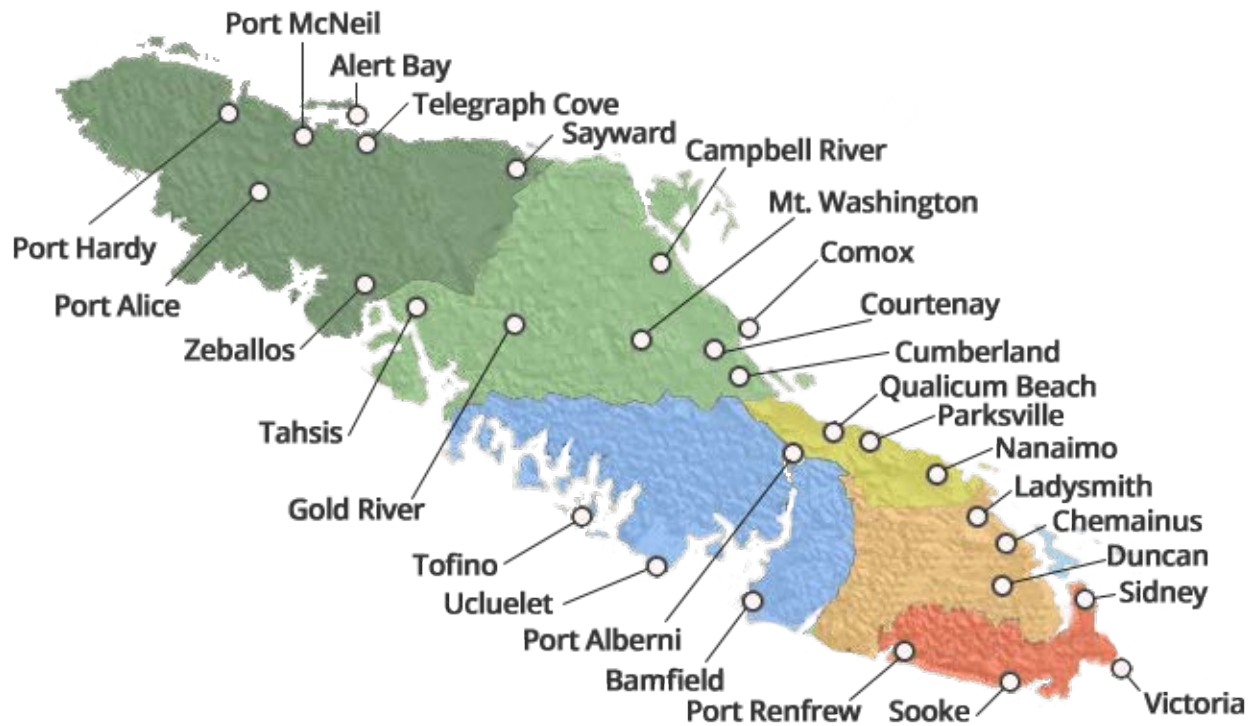
Thuringer, P. (2003). Documenting Pacific sand lance (*Ammodytes hexapterus*) spawning habitat in Baynes Sound and the potential interactions with intertidal shellfish aquaculture. Retrieved from https://www.for.gov.bc.ca/tasb/slrp/marine/south_island/baynes/docs/sandlance/baynes_sand_lance_%20draftreport.pdf

Thuringer, P. (2017). Personal communication.

Thuringer, P. (2020). Personal communication.

Appendix I:

Forage Fish Sampling: Location Codes



Developed by: Mount Arrowsmith Biosphere Region Research Institute (MABRRI)

May 2018

Revised: August 2019

TABLE OF CONTENTS

1.0 Intro	28
2.0 Regional District of Mount Waddington (RDMW)	29 – 30
2.1 Municipalities	29
2.2 Electoral Areas	30
3.0 Strathcona Regional District (SRD)	31 – 32
3.1 Municipalities	31
3.2 Electoral Areas	32
4.0 Comox Valley Regional District (CMVRD)	33 – 34
4.1 Municipalities	33
4.2 Electoral Areas	34
5.0 Alberni-Clayoquot Regional District (ACRD)	35 – 36
5.1 Municipalities	35
5.2 Electoral Areas	36
6.0 Regional District of Nanaimo	37 – 38
6.1 Municipalities	37
6.2 Electoral Areas	38
7.0 Cowichan Valley Regional District (CWVRD)	39 – 40
7.1 Municipalities	39
7.2 Electoral Areas	40
8.0 Capital Regional District (CRD)	41 – 44
8.1 Municipalities	41
8.2 Electoral Areas	44
9.0 Gulf Islands (GI)	45
10.0 Powell River Regional District (PRRD)	46
10.1 Municipalities	46
10.2 Electoral Areas	46
11.0 Sunshine Coast Regional District (SCRD)	47
11.1 Municipalities	47
11.2 Electoral Areas	47
12.0 Metro Vancouver Regional District (MVRD)	48 – 52
12.1 Municipalities	48
12.2 Electoral Areas	52
13.0 References	53
Appendix A: Quick Summary of Location Codes	54 – 56
Appendix B: Forage Fish Spawning Beach Survey – Habitat Characteristics	57

FIGURES

Figure 1: Location data as seen on data sheet (Appendix B)	28
Figure 2: District of Port Hardy	29
Figure 3: District of Port Hardy	29
Figure 4: District of Port Hardy	29
Figure 5: Town of Port McNeill	29
Figure 6: Village of Port Alice	30
Figure 7: Village of Alert Bay	30
Figure 8: Electoral Areas of the Regional District of Mount Waddington	30
Figure 9: Village of Zeballos	31
Figure 10: Village of Tahsis	31
Figure 11: Village of Gold River	31
Figure 12: Village of Sayward	31
Figure 13: City of Campbell River	32
Figure 14: City of Campbell River	32
Figure 15: City of Campbell River	32
Figure 16: Electoral Areas of Strathcona Regional District	32
Figure 17: Village of Cumberland	33
Figure 18: Town of Comox	33
Figure 19: City of Courtenay	33
Figure 20: Electoral Areas of Comox Valley Regional District	34
Figure 21: District of Tofino	35
Figure 22: District of Ucluelet	35
Figure 23: City of Port Alberni	35
Figure 24: Electoral Areas of the Alberni-Clayoquot Regional District	36
Figure 25: City of Nanaimo	37
Figure 26: City of Parksville	37
Figure 27: Town of Qualicum Beach	37
Figure 28: District of Lantzville	38
Figure 29: Electoral Areas of the Regional District of Nanaimo	38
Figure 30: Town of Ladysmith	39
Figure 31: Municipality of North Cowichan	39
Figure 32: Town of Lake Cowichan	39

Forage Fish Sampling: Location Codes

Figure 33: City of Duncan	40
Figure 34: Electoral Areas of the Cowichan Valley Regional District	40
Figure 35: Town of Sidney	41
Figure 36: District of Central Saanich	41
Figure 37: District of North Saanich	41
Figure 38: District of Highlands	41
Figure 39: District of Saanich	42
Figure 40: District of Sooke	42
Figure 41: District of Metchosin	42
Figure 42: City of Langford	42
Figure 43: Town of View Royal	43
Figure 44: City of Colwood	43
Figure 45: Township of Esquimalt	43
Figure 46: District of Oak Bay	43
Figure 47: City of Victoria	44
Figure 48: Electoral Areas of the Capital Regional District	44
Figure 49: Salt Spring Island Electoral Area	45
Figure 50: Southern Gulf Islands Electoral Area	45
Figure 51: Southern Gulf Islands Electoral Area	45
Figure 52: City of Powell River	46
Figure 53: Electoral Areas of the Powell River Regional District	46
Figure 54: Town of Gibsons	47
Figure 55: District of Sechelt	47
Figure 56: Electoral areas of the Sunshine Coast Regional District	47
Figure 57: Village of Anmore	48
Figure 58: Village of Belcarra	48
Figure 59: Bowen Island Municipality	48
Figure 60: City of Burnaby	48
Figure 61: City of Delta	49
Figure 62: District of North Vancouver	49
Figure 63: Village of Lion's Bay	49
Figure 64: City of Maple Ridge	49
Figure 65: City of North Vancouver	50

Forage Fish Sampling: Location Codes

Figure 66: City of Port Moody	50
Figure 67: City of Richmond	50
Figure 68: City of Surrey	50
Figure 69: Tsawwassen First Nation land	51
Figure 70: City of Vancouver	51
Figure 71: City of White Rock	51
Figure 72: District of West Vancouver	51
Figure 73: Electoral Area A in Metro Vancouver Regional District	52
Figure 74: Forage Fish Spawning Beach Survey – Habitat Characteristics Data Sheet	57

1.0 INTRODUCTION

‘Forage fishes’ is a term referring to species of small, schooling fishes that are an important food source for larger mammals, seabirds, and fish (Penttila, 2007). According to the BC Ministry of Environment, forage fish, also known as pelagic fishes, consist of numerous species, including: herring, anchovies, smelts, capelin, sardines, eulachon and sand lance (BC Ministry of Environment, 2014). These species are classified based on their ecological role in the marine ecosystem, rather than their taxonomy. Forage fish populations are declining globally, subsequently increasing adverse impacts culturally, ecologically, and economically (Mckechnie et al., 2014).

Although forage fish habitats are identified as critical fish habitat under the Canadian Fisheries Act, making them protected, BC has little data regarding the location and timing associated with these habitats (de Graaf, 2010). In response to this data gap, the Sea Watch Society developed the Forage Fish Program (FFP), which involves potential spawning site identification, as well as site surveying, mapping, and monitoring of two forage fish species within BC, surf smelt and Pacific sand lance (de Graaf, 2013). The FFP involves training volunteers and community groups along the coast of BC to identify potential spawning sites of these two species and offer monitoring of these locations (de Graaf, 2013).

In 2017, the Mount Arrowsmith Biosphere Region Research Institute (MABRRI) at Vancouver Island University was trained to use the “vortex method” by a Nearshore and Forage Fish Specialist from the Washington State Department of Fish and Wildlife. The MABRRI team monitors beaches along the coast, as well as trains citizen scientists to do the same in order to build the capacity of this project. Since 2017, other groups, including Peninsula Stream Society, have begun monitoring and training citizen science groups to further expand this initiative’s capacity and range. By regularly monitoring the beaches, this initiative aims to reduce the current data gap that exists regarding forage fish spawning habitat along the Vancouver Island and Gulf Island coastlines.

MABRRI created this quick reference document, in addition to the “Fisheries and Oceans (DFO) Canada Management Areas: Vancouver Island” document, in order to aid in the standardization of data collection and data referencing. Codes for locations across the entirety of Vancouver Island and the Gulf Islands were created in order to retrieve site specific data in a timely fashion. Each site that is sampled will have a corresponding code that includes the regional district of Vancouver Island, the municipality and/or electoral area, and the beach (Figure 1). This document includes the codes that were assigned to each regional district, municipality, and electoral area.

Region	Municipality	Beach	DFO Mngt Area

Figure 1. Location data as seen on data sheet (Appendix B)

2.0 REGIONAL DISTRICT OF MOUNT WADDINGTON (RDMW)

2.1 Municipalities

PH - District of Port Hardy

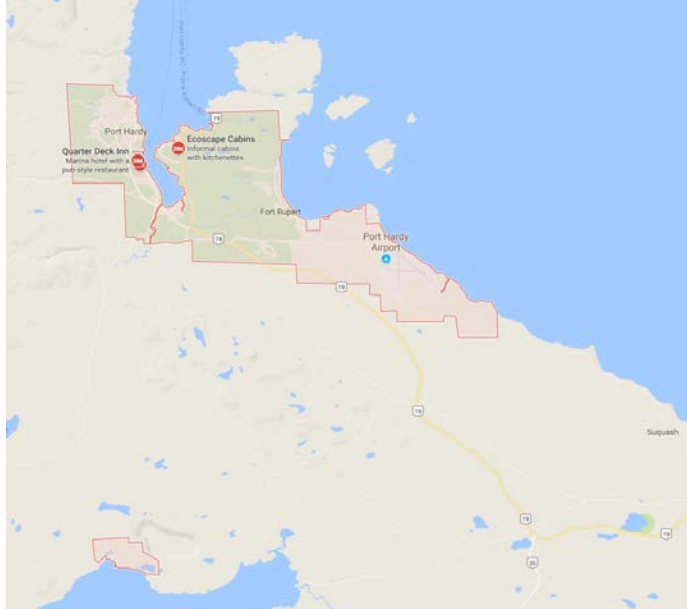


Figure 2: District of Port Hardy. Source: Google Maps Imagery (2017)



Figure 3: District of Port Hardy. Source: Google Maps Imagery (2017)



Figure 4: District of Port Hardy. Source: Google Maps Imagery (2017)

PM – Town of Port McNeill

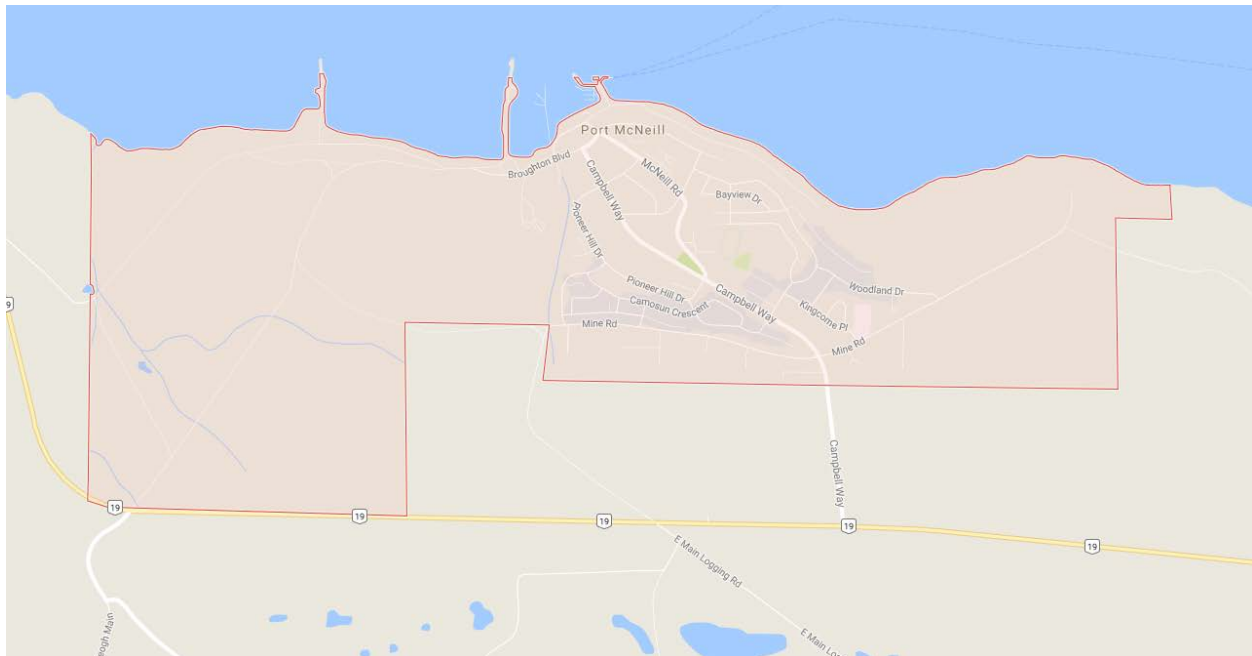


Figure 5: Town of Port McNeill. Source: Google Maps Imagery (2017)

Forage Fish Sampling: Location Codes

PO – Village of Port Alice



Figure 6: Village of Port Alice.
Source: Google Maps Imagery (2017)

AB – Village of Alert Bay



Figure 7: Village of Alert Bay.
Source: Google Maps Imagery (2017)

2.2 Electoral Areas

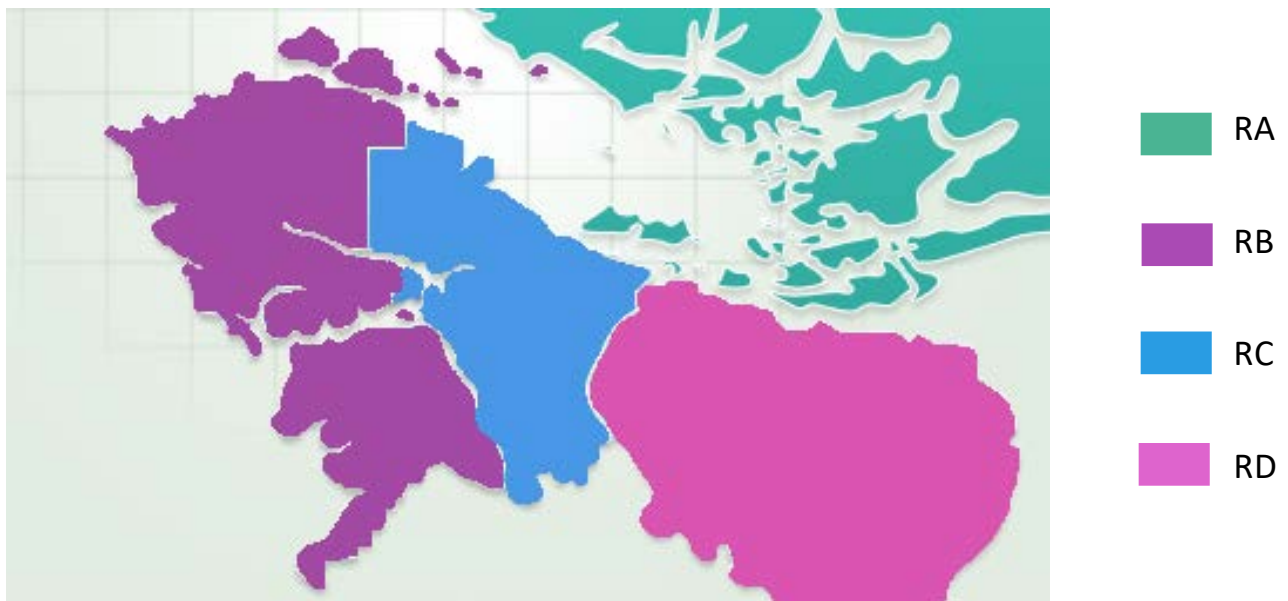


Figure 8: Electoral Areas of the Regional District of Mount Waddington.
Source: Regional District of Mount Waddington Website (2017)

3.0 STRATHCONA REGIONAL DISTRICT (SRD)

3.1 Municipalities

ZE – Village of Zeballos



Figure 9: Village of Zeballos.
Source: Google Maps Imagery (2017)

TA – Village of Tahsis



Figure 10: Village of Tahsis.
Source: Google Maps Imagery (2017)

GR – Village of Gold River



Figure 11: Village of Gold River.
Source: Google Maps Imagery (2017)

SA – Village of Sayward



Figure 12: Village of Sayward.
Source: Google Maps Imagery (2017)

Forage Fish Sampling: Location Codes

CR – City of Campbell River

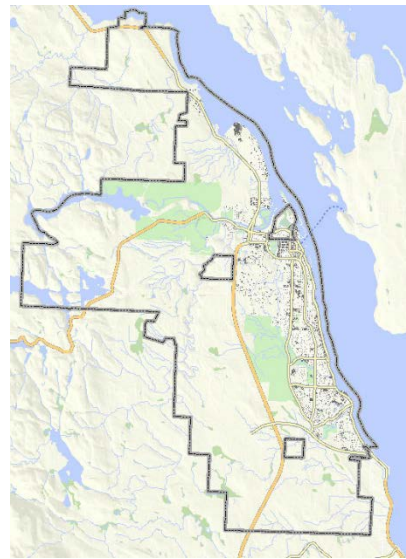
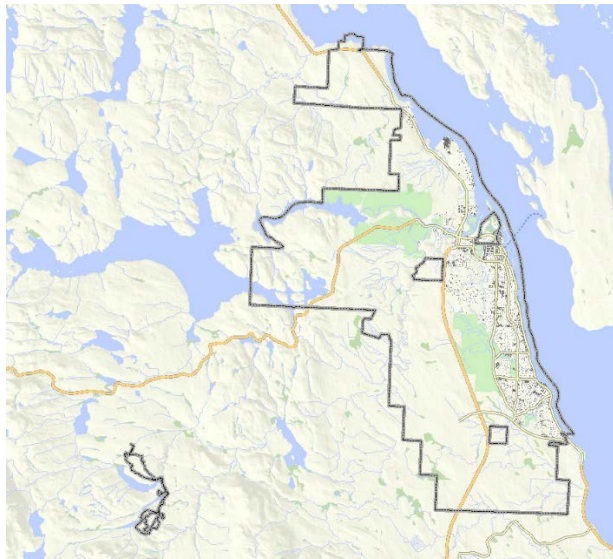


Figure 15

Figures 13 – 15: City of Campbell River. Source: City of Campbell River Website (2017)

3.2 Electoral Areas

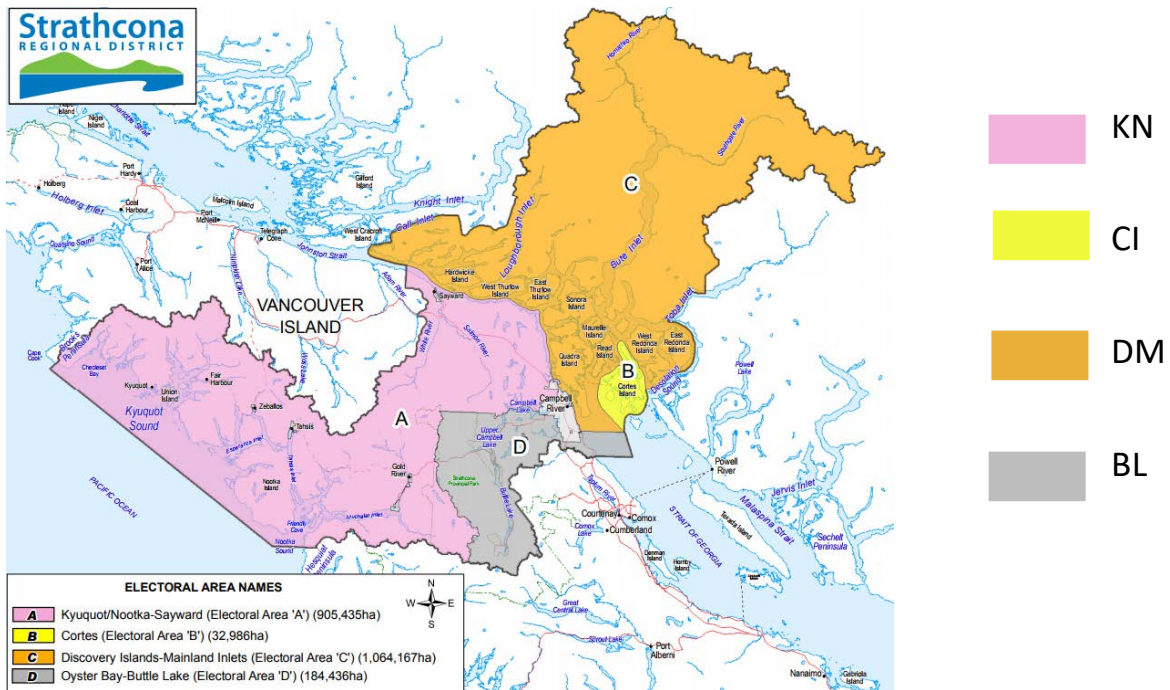


Figure 16: Electoral Areas of Strathcona Regional District. Source: Strathcona Regional District Website (2013)

4.0 COMOX VALLEY REGIONAL DISTRICT (CMVRD)

4.1 Municipalities

CU – Village of Cumberland



Figure 17: Village of Cumberland.
Source: Google Maps Imagery (2017)

CM – Town of Comox



Figure 18: Town of Comox.
Source: Google Maps Imagery (2017)

CT – City of Courtenay

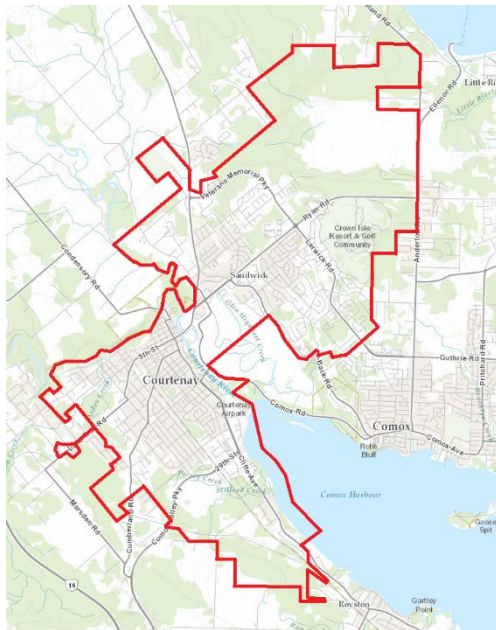


Figure 19: City of Courtenay.
Source: City of Courtenay Website (2015)

4.2 Electoral Areas

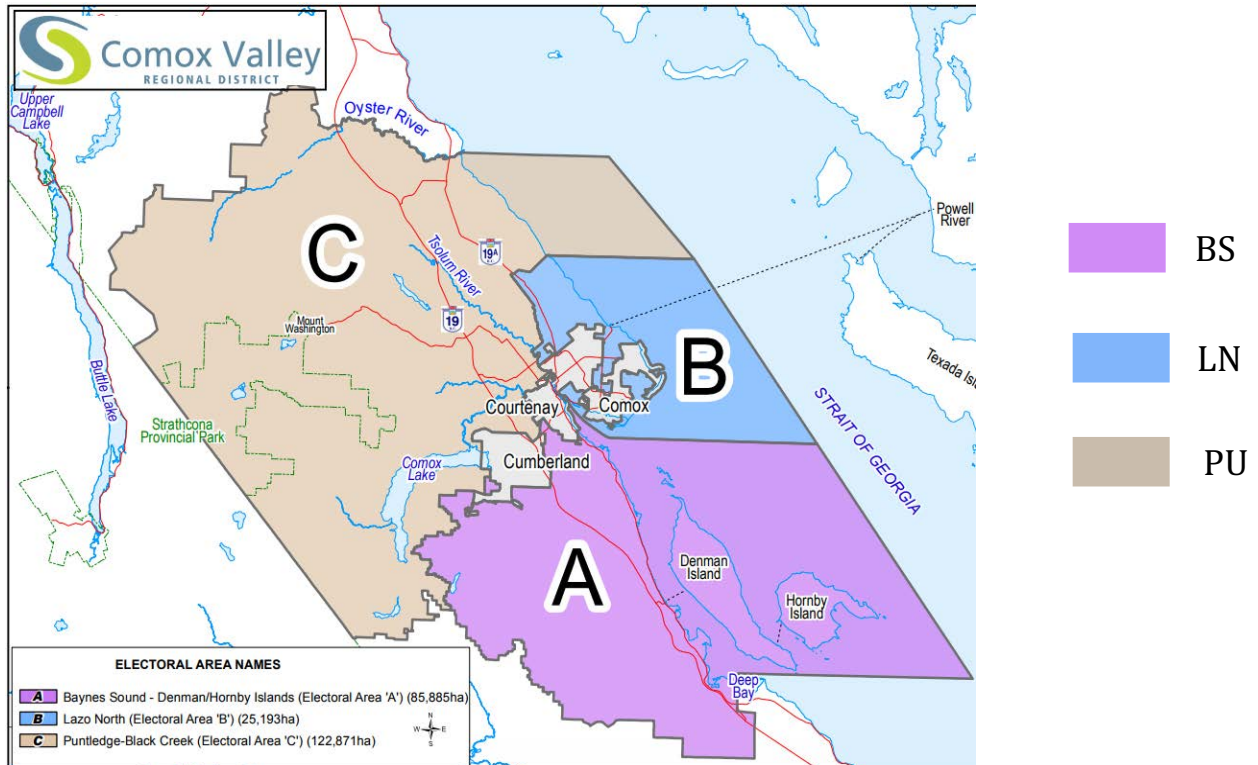


Figure 20: Electoral Areas of Comox Valley Regional District.
Source: Comox Valley Regional District Website (2017)

5.0 ALBERNI-CLAYOQUOT REGIONAL DISTRICT (ACRD)

5.1 Municipalities

TO – District of Tofino

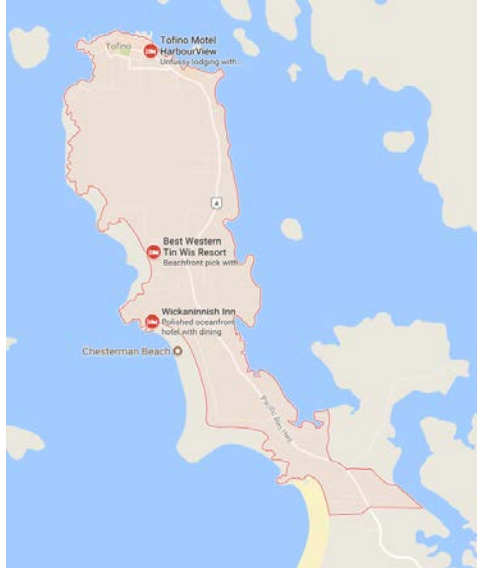


Figure 21: District of Tofino.
Source: Google Maps Imagery (2017)

UC – District of Ucluelet

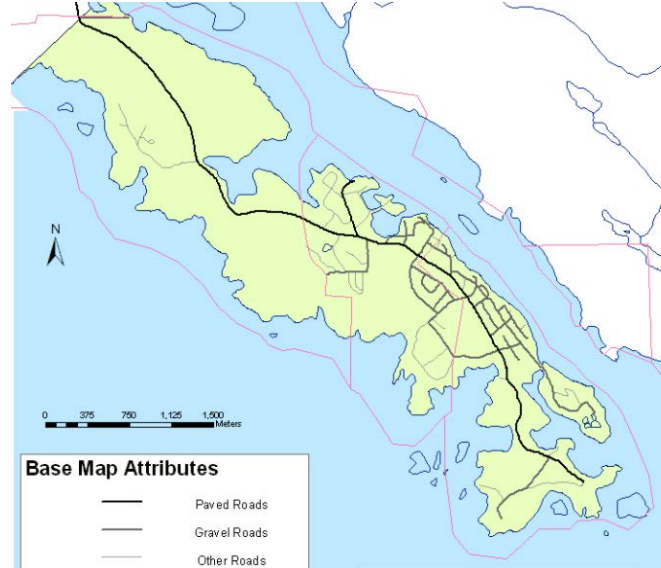


Figure 22: District of Ucluelet.
Source: University of British Columbia's Department of Geography (2005)

CP – City of Port Alberni

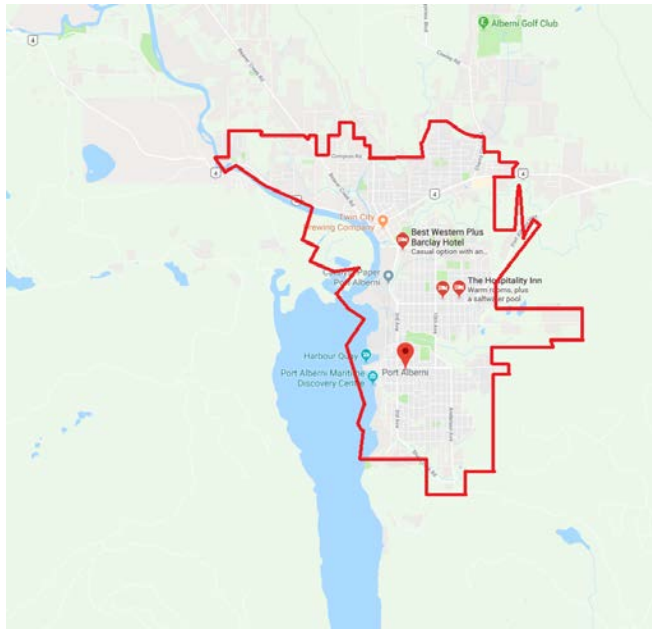


Figure 23: City of Port Alberni.
Source: Google Maps Imagery (2017)

5.2 Electoral Areas

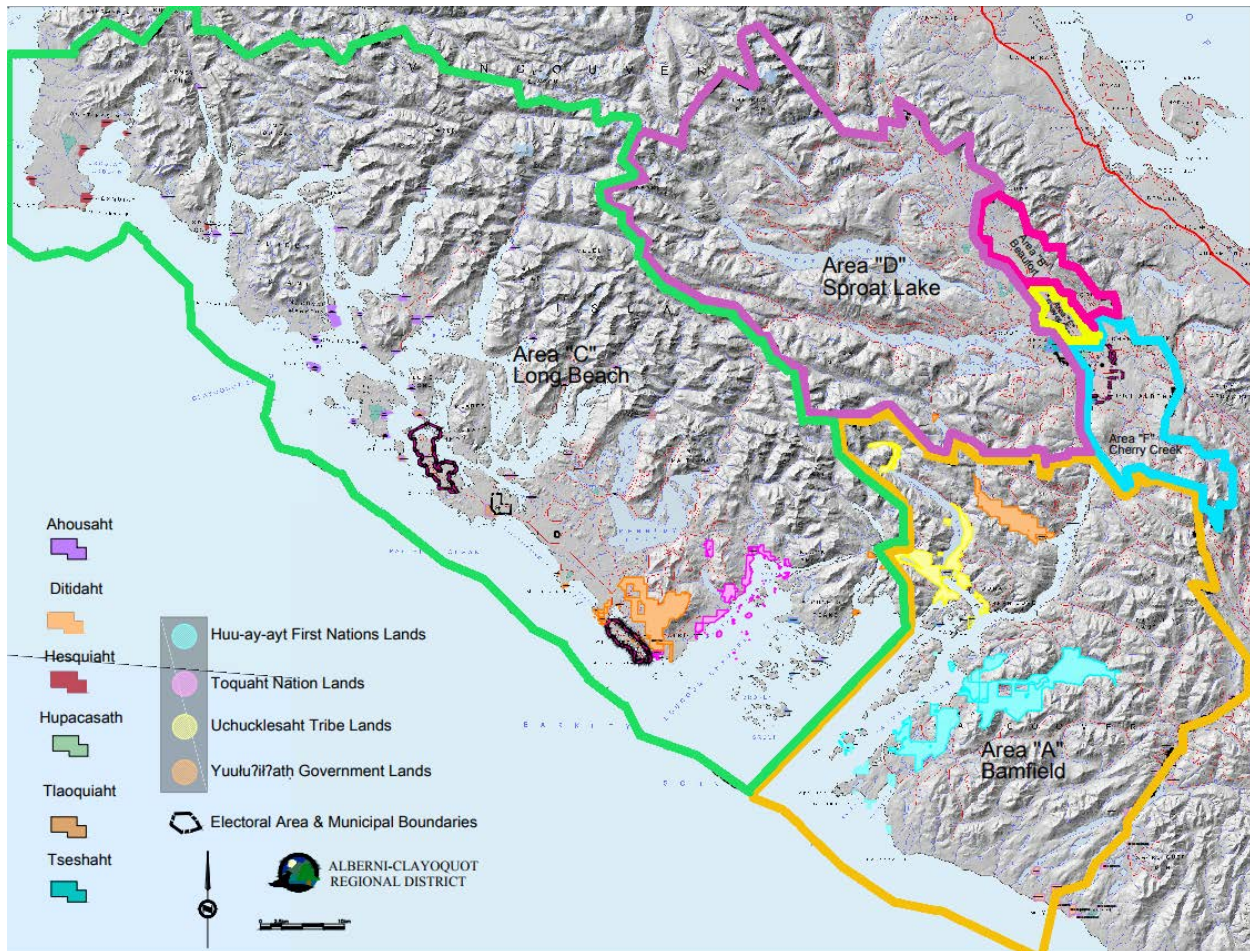


Figure 24: Electoral Areas of the Alberni-Clayoquot Regional District.
Source: Alberni-Clayoquot Regional District Website (2017)

BF LO

6.0 REGIONAL DISTRICT OF NANAIMO (RDN)

6.1 Municipalities

NA – City of Nanaimo

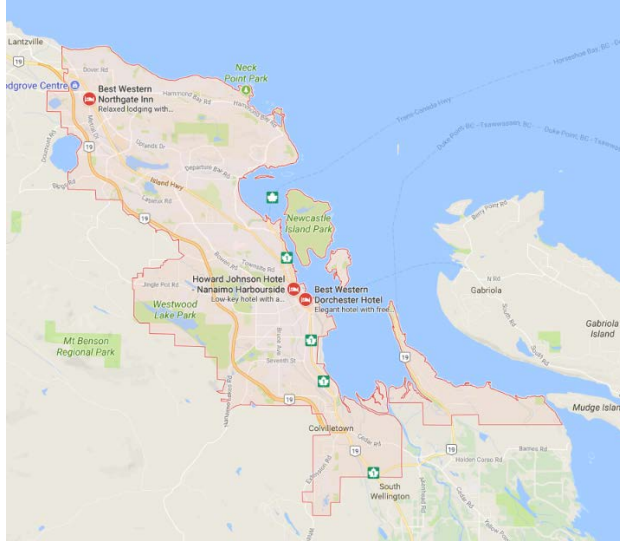


Figure 25: City of Nanaimo.
Source: Google Maps Imagery (2017)

PK – City of Parksville

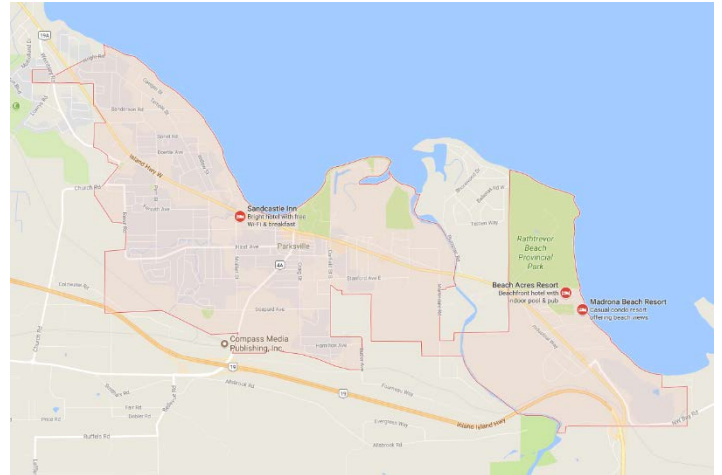


Figure 26: City of Parksville.
Source: Google Maps Imagery (2017)

QB – Town of Qualicum Beach

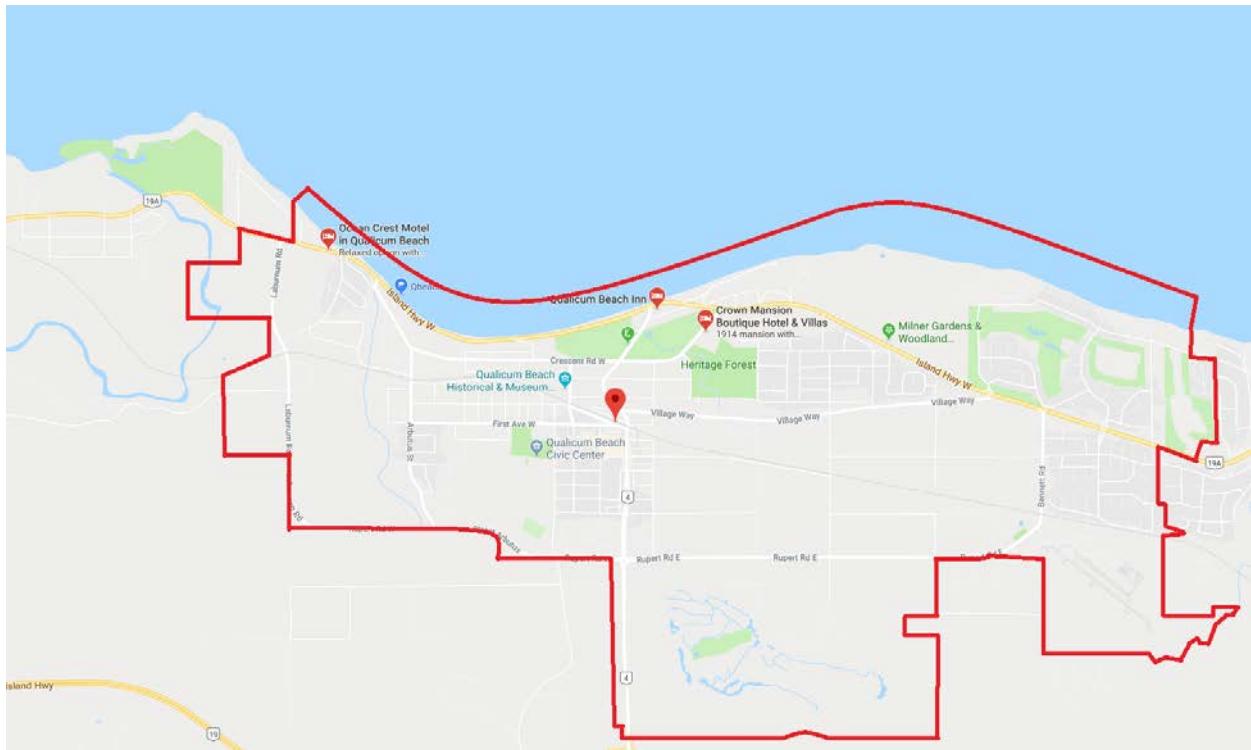


Figure 27: Town of Qualicum Beach. Source: Google Maps Imagery (2017)

Forage Fish Sampling: Location Codes

LA – District of Lantzville

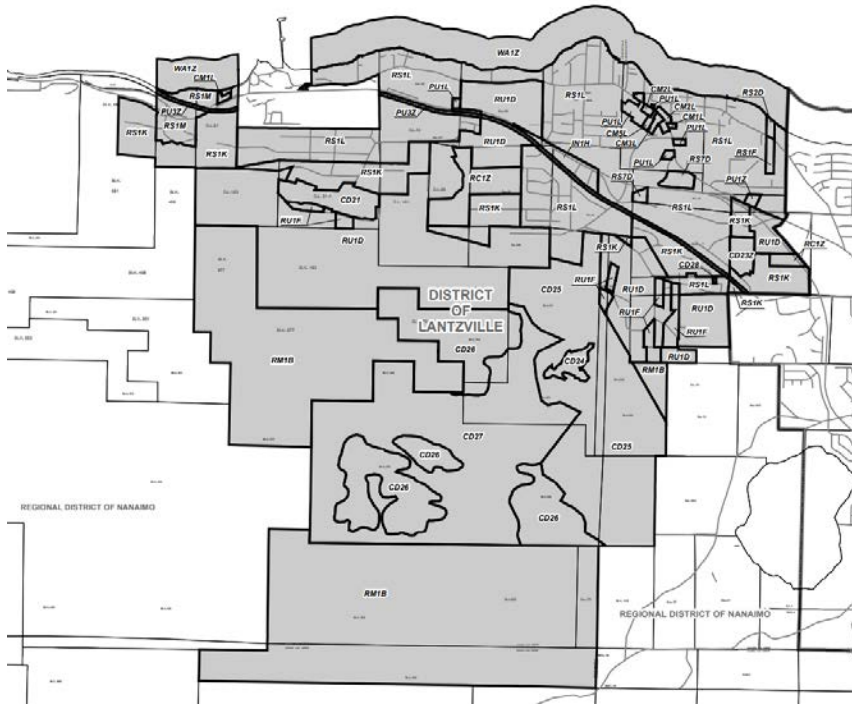


Figure 28: District of Lantzville. Source: District of Lantzville Website (2017)

6.2 Electoral Areas

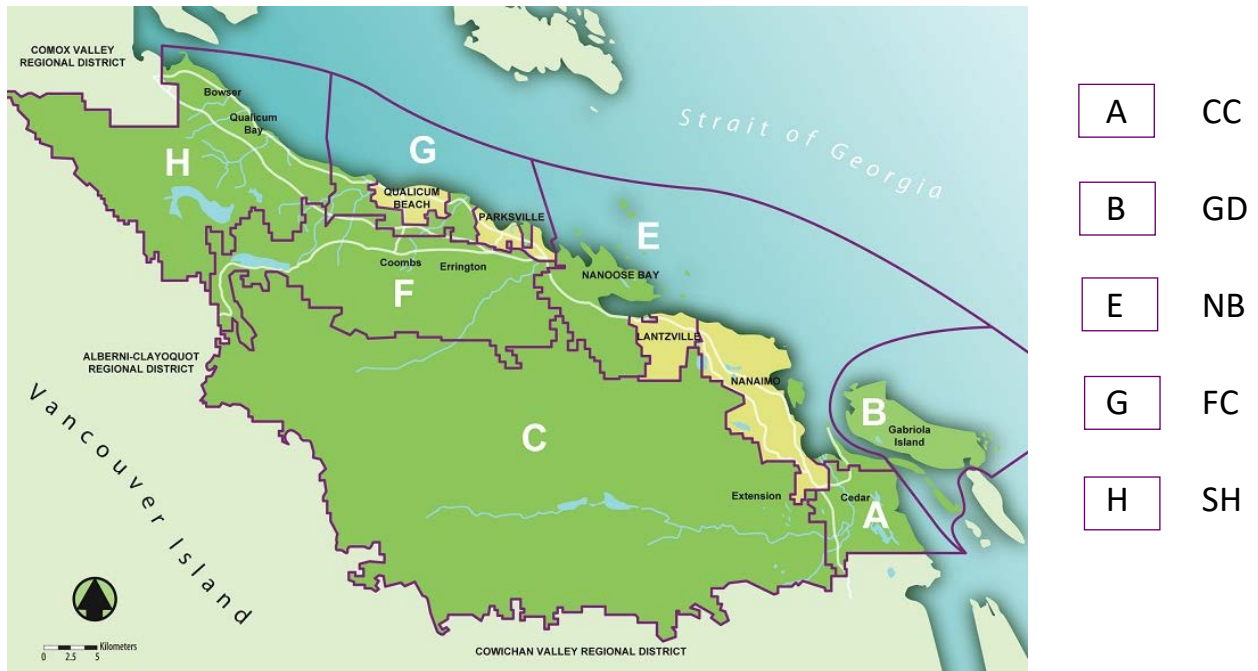


Figure 29: Electoral Areas of the Regional District of Nanaimo. Source: Regional District of Nanaimo Website (2016)

7.0 COWICHAN VALLEY REGIONAL DISTRICT (CWVRD)

7.1 Municipalities

LS – Town of Ladysmith



Figure 30: Town of Ladysmith.
Source: Google Maps Imagery (2017)

NC – Municipality of North Cowichan

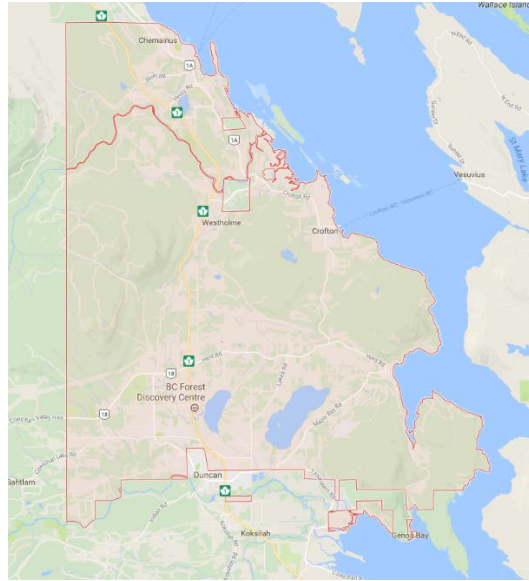


Figure 31: Municipality of North Cowichan.
Source: Google Maps Imagery (2017)

LC – Town of Lake Cowichan

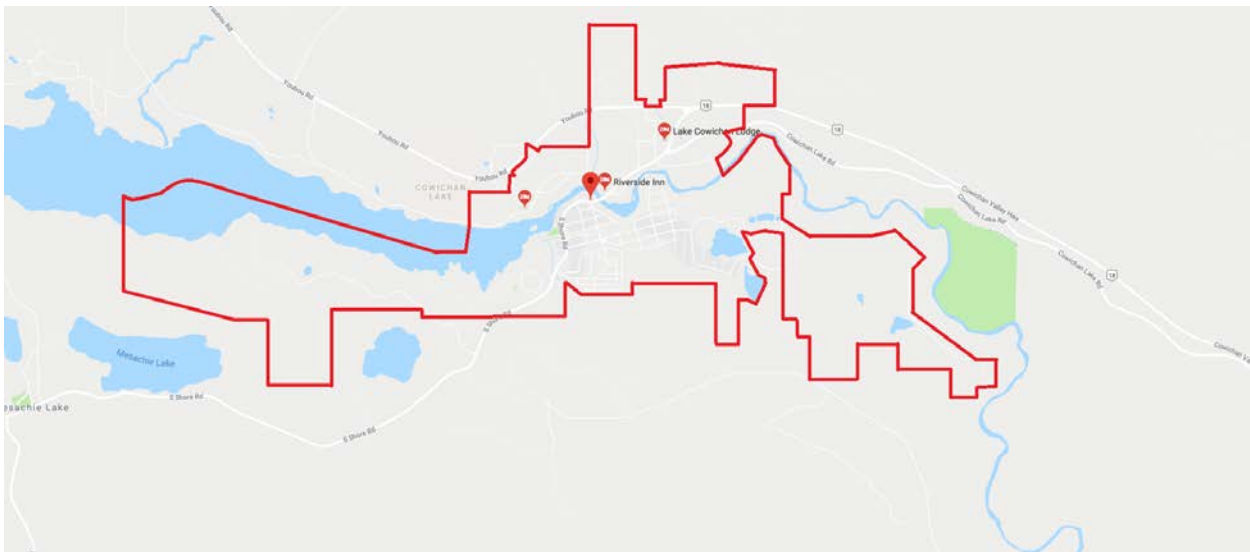


Figure 32: Town of Lake Cowichan. Source: Google Maps Imagery (2017)

Forage Fish Sampling: Location Codes

DU – City of Duncan

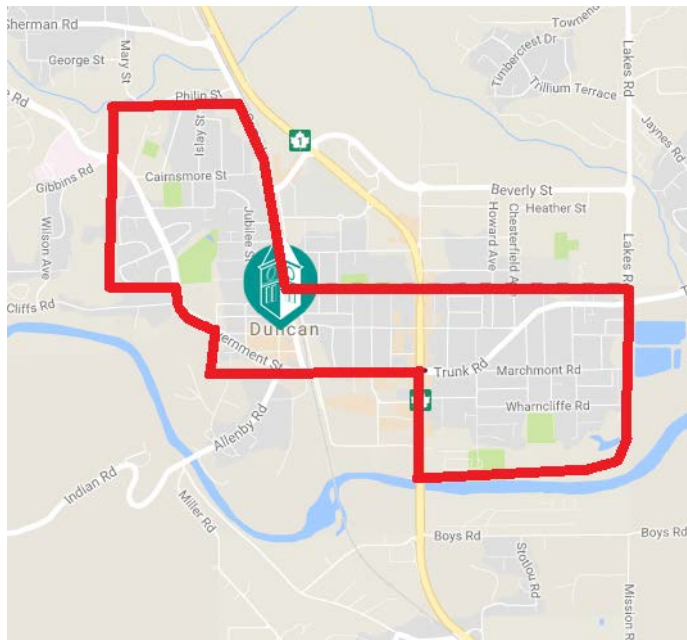


Figure 33: City of Duncan. Source: City of Duncan Website (2017)

7.2 Electoral Areas

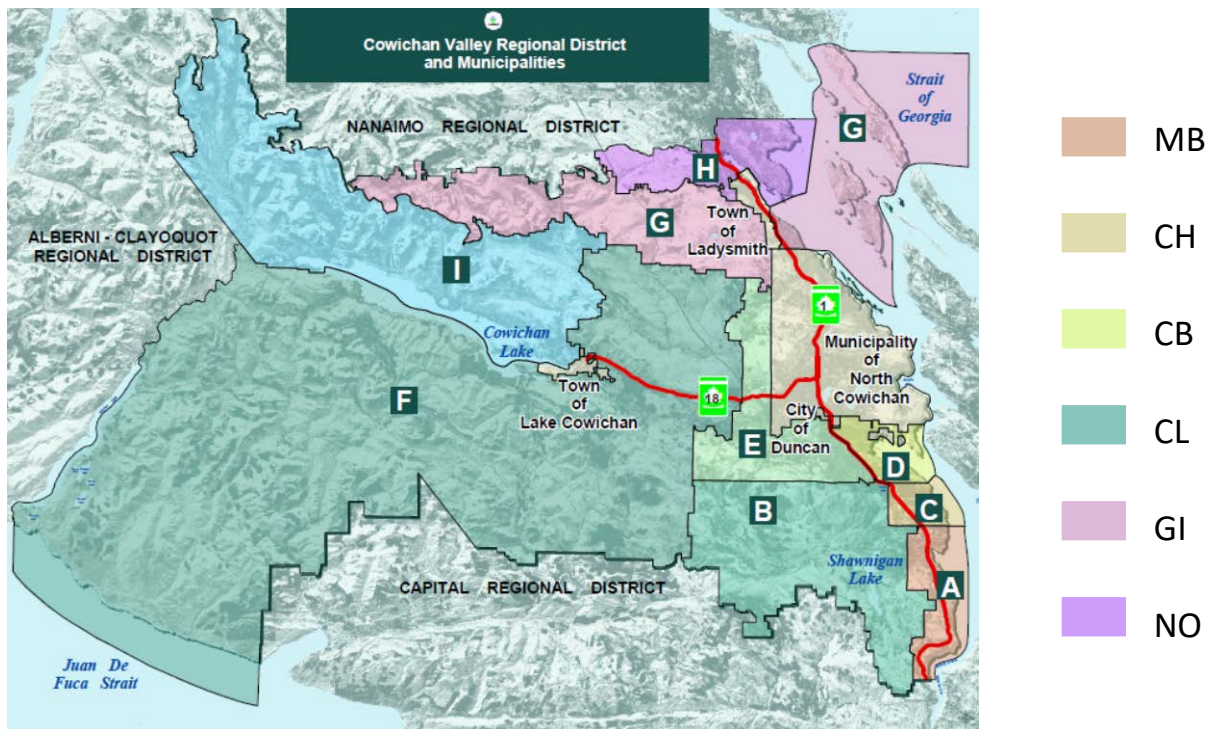


Figure 34: Electoral Areas of the Cowichan Valley Regional District. Source: One Cowichan Website (2014)

8.0 CAPITAL REGIONAL DISTRICT (CRD)

8.1 Municipalities

SI – Town of Sidney



Figure 35: Town of Sidney.
Source: Capital Regional District Website (2017)

CS – District of Central Saanich

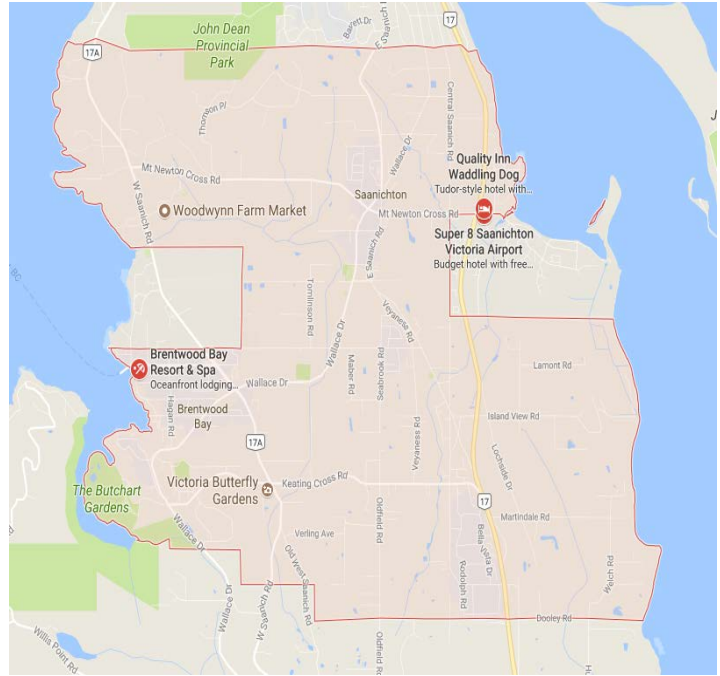


Figure 36: District of Central Saanich.
Source: Google Maps Imagery (2017)

NS – District of North Saanich

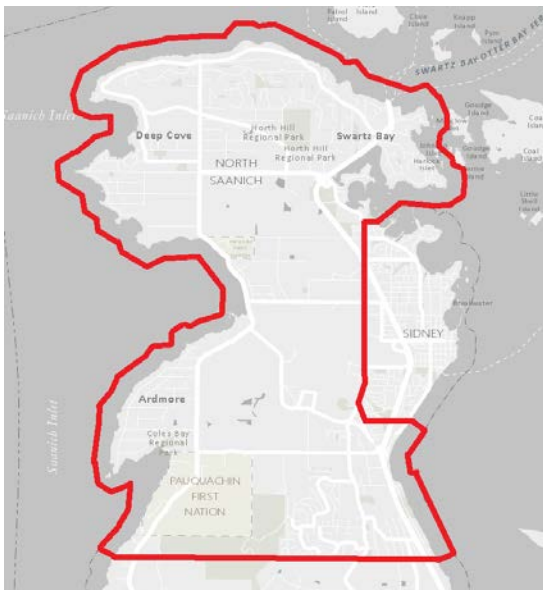


Figure 37: District of North Saanich.
Source: Capital Regional District Website (2017)

HI – District of Highlands

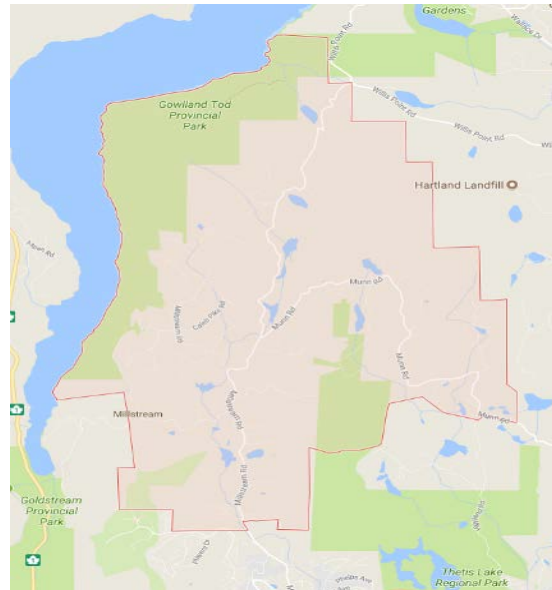


Figure 38: District of Highlands.
Source: Google Maps Imagery (2017)

Forage Fish Sampling: Location Codes

SN – District of Saanich

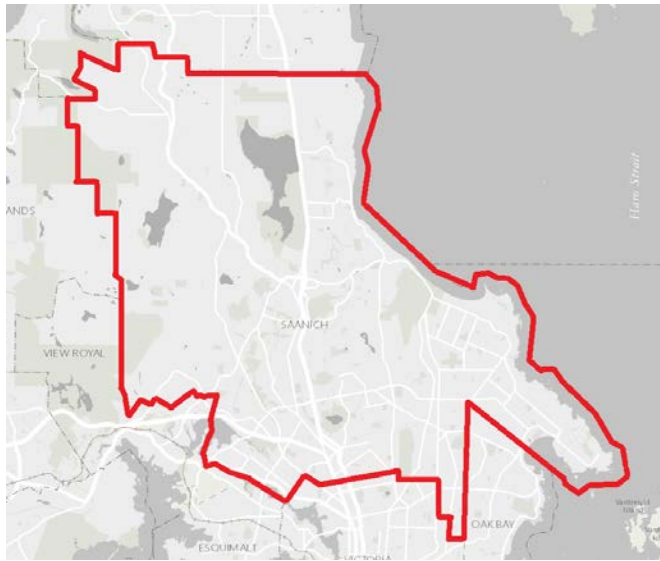


Figure 39: District of Saanich.
Source: Capital Regional District Website (2017)

SO – District of Sooke

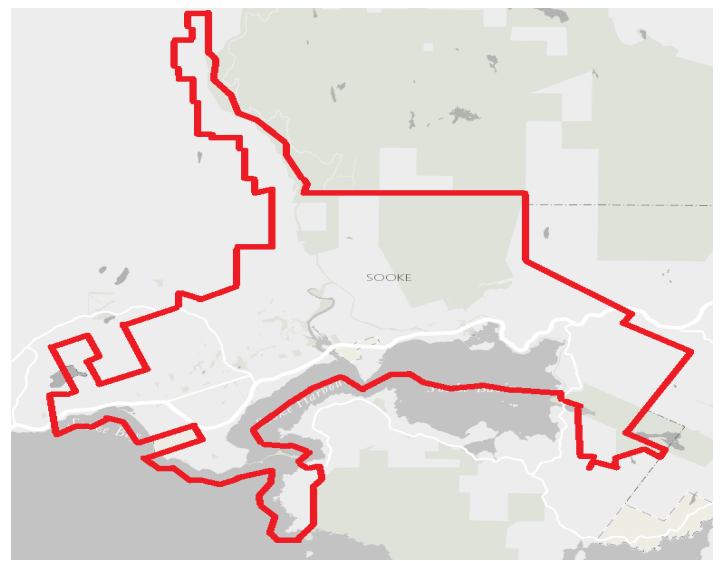


Figure 40: District of Sooke.
Source: Capital Regional District Website (2017)

ME – District of Metchosin

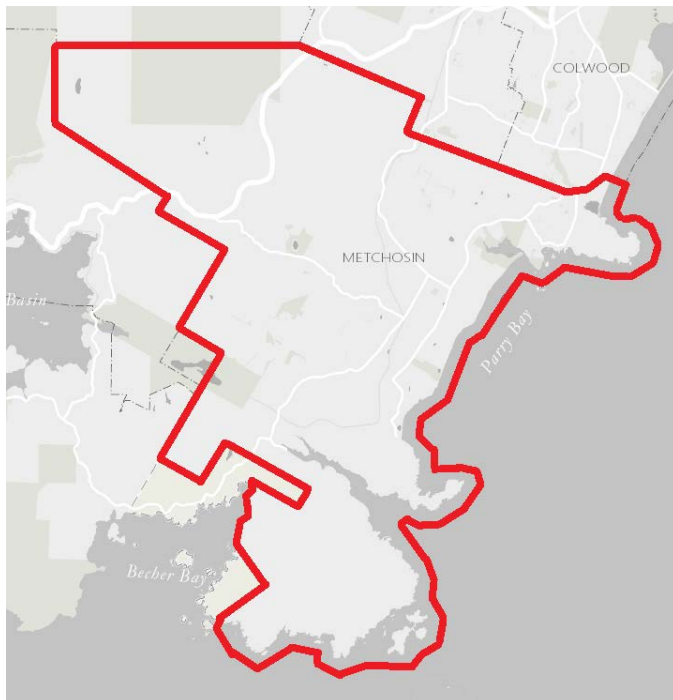


Figure 41: District of Metchosin.
Source: Capital Regional District Website (2017)

LF – City of Langford

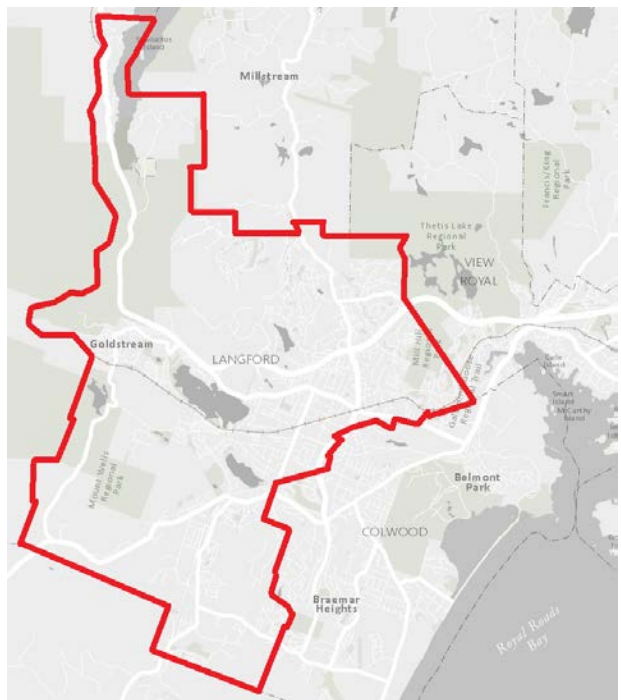


Figure 42: City of Langford.
Source: Capital Regional District Website (2017)

Forage Fish Sampling: Location Codes

VR – Town of View Royal

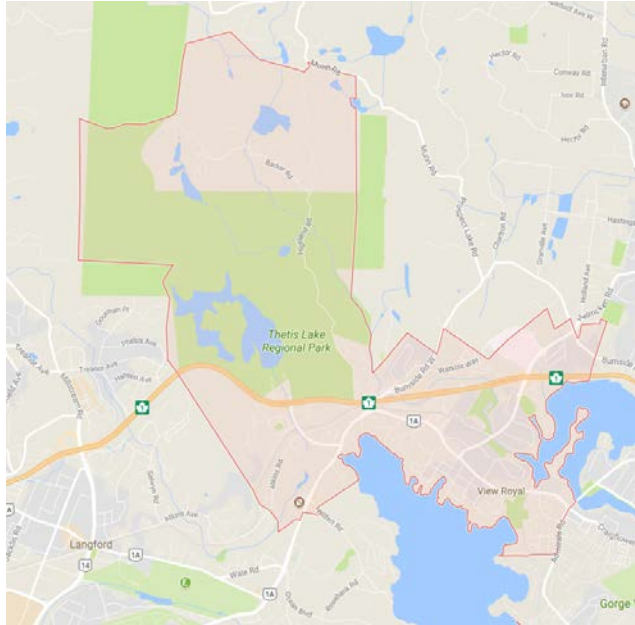


Figure 43: Town of View Royal.
Source: Google Maps Imagery (2017)

CO – City of Colwood



Figure 44: City of Colwood.
Source: Google Maps Imagery (2017)

ES – Township of Esquimalt

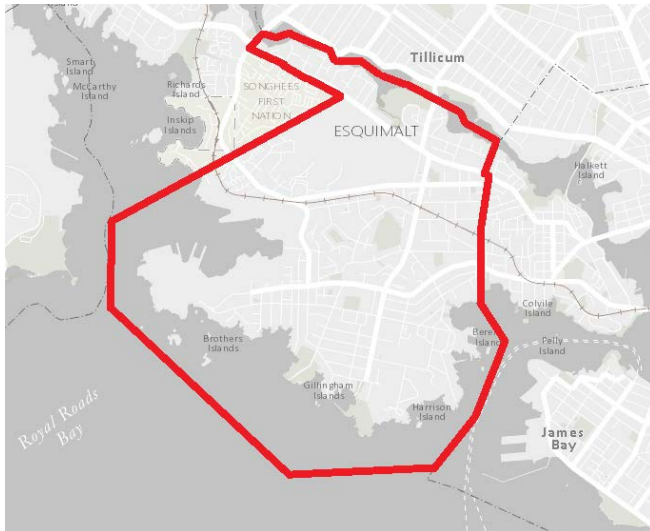


Figure 45: Township of Esquimalt.
Source: Capital Regional District Website (2017)

OB – District of Oak Bay



Figure 46: District of Oak Bay.
Source: Capital Regional District Website (2017)

Forage Fish Sampling: Location Codes

VI – City of Victoria



Figure 47: City of Victoria. Source: Capital Regional District Website (2017)

8.2 Electoral Areas



Figure 48: Electoral Areas of the Capital Regional District. Source: Brian Laing Realtor Website (2012)

JF
Juan de Fuca

SG
Southern Gulf Islands

SS
Salt Spring Island

9.0 GULF ISLANDS (GI)

SS – Salt Spring Island Electoral Area



Figure 49: Salt Spring Island Electoral Area.
Source: Capital Regional District Website (2017)

SG – Southern Gulf Islands Electoral Area

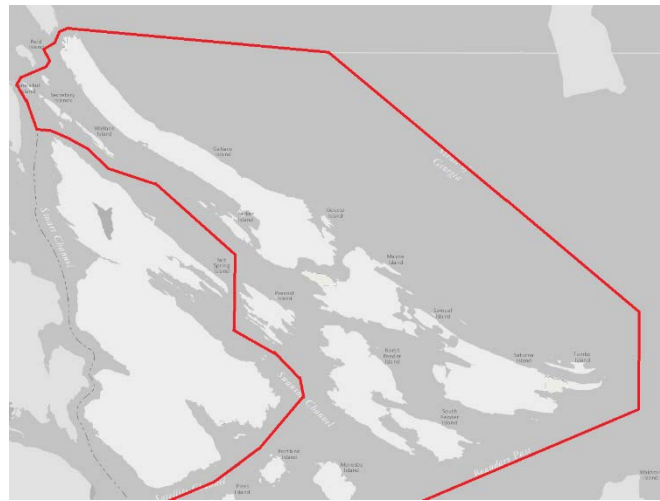


Figure 50: Southern Gulf Islands Electoral Area.
Source: Capital Regional District Website (2017)



Figure 51: Southern Gulf Islands Electoral Area.
Source: Capital Regional District Website (2017)

10.0 POWELL RIVER REGIONAL DISTRICT (PRRD)

10.1 Municipalities

PR – City of Powell River



Figure 52: City of Powell River.
Source: qathet Regional District Mapping (2019)

10.2 Electoral Areas

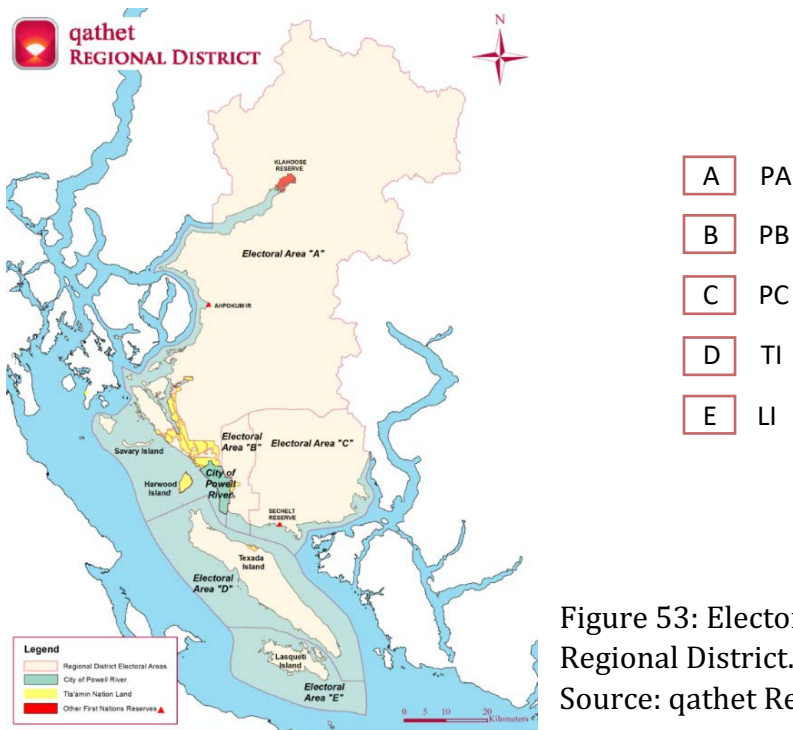


Figure 53: Electoral Areas of the Powell River Regional District.
Source: qathet Regional District Website (2018)

11.0 SUNSHINE COAST REGIONAL DISTRICT (SCRD)

11.1 Municipalities

GB – Town of Gibsons

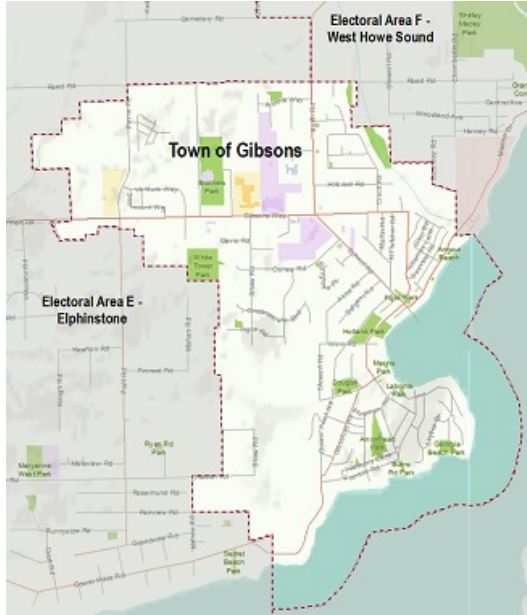


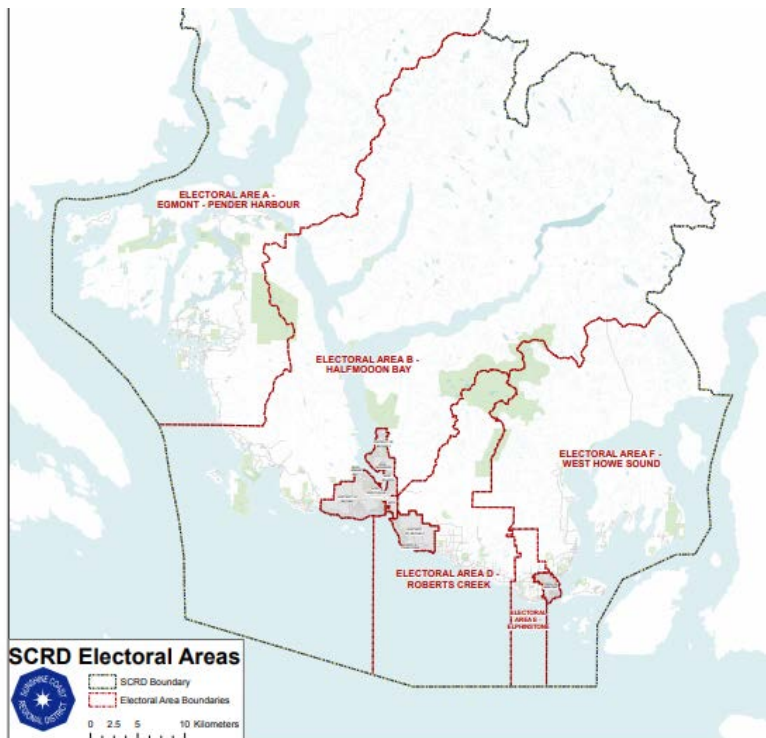
Figure 54: Town of Gibsons.
Source: Town of Gibsons Website (2015)

SE – District of Sechelt



Figure 55: District of Sechelt.
Source: District of Sechelt Website (2019)

11.2 Electoral Areas



A	EG
B	HB
D	RO
E	EL
F	WH

Figure 56: Electoral areas of the Sunshine Coast Regional District.
Source: SCR D Website (2015)

12.0 METRO VANCOUVER REGIONAL DISTRICT (MVRD)

12.1 Municipalities

AN – Village of Anmore

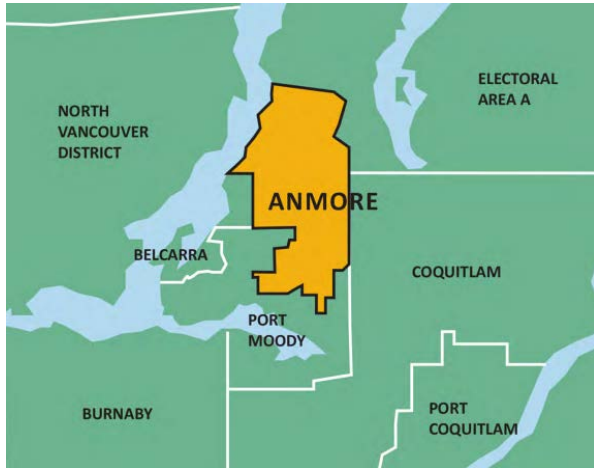


Figure 57: Village of Anmore.
Source: Village of Anmore Official Community Plan (2014)

BE – Village of Belcarra



Figure 58: Village of Belcarra.
Source: Wikipedia (2019)

BI – Bowen Island Municipality



Figure 59: Bowen Island Municipality.
Source: Tourism Vancouver Website (2019)

BU – City of Burnaby



Figure 60: City of Burnaby.
Source: Tourism Vancouver Website (2019)

Forage Fish Sampling: Location Codes

DE – City of Delta

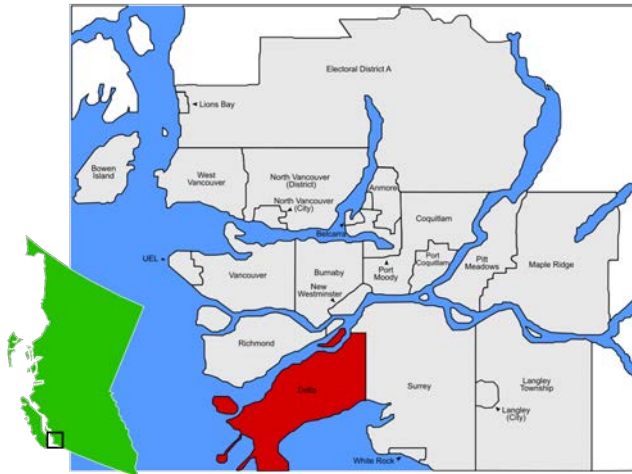


Figure 61: City of Delta.
Source: Wikipedia (2019)

DN – District of North Vancouver



Figure 62: District of North Vancouver.
Source: Tourism Vancouver Website (2019)

LB – Village of Lion’s Bay

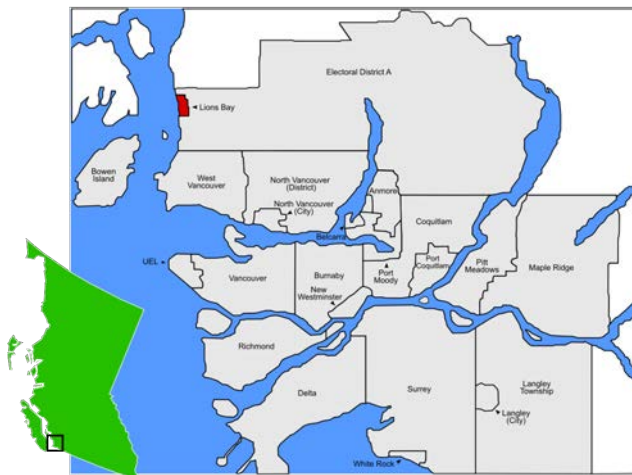


Figure 63: Village of Lion’s Bay.
Source: Wikipedia (2019)

MR – City of Maple Ridge

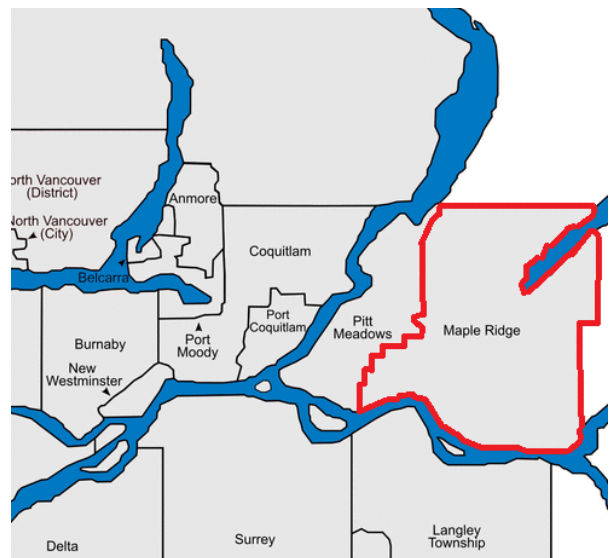


Figure 64: City of Maple Ridge.
Source: Tourism Vancouver Website (2019)

Forage Fish Sampling: Location Codes

NV – City of North Vancouver



Figure 65: City of North Vancouver.
Source: Tourism Vancouver Website (2019)

PY – City of Port Moody

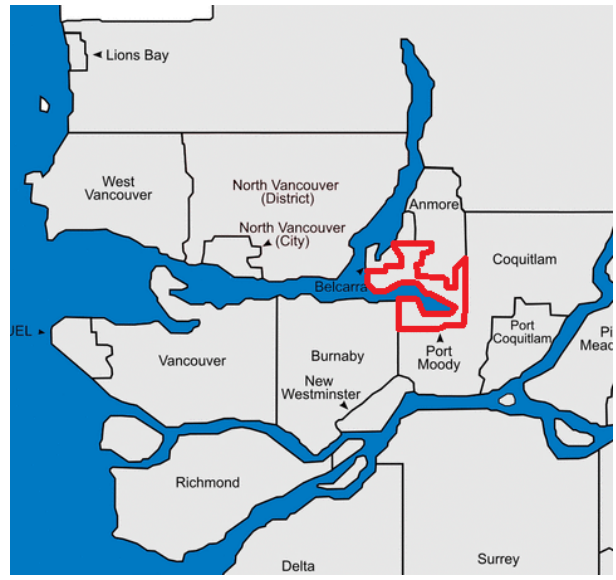


Figure 66: City of Port Moody.
Source: Tourism Vancouver Website (2019)

RI – City of Richmond



Figure 67: City of Richmond.
Source: City of Richmond Website (2018)

SU – City of Surrey

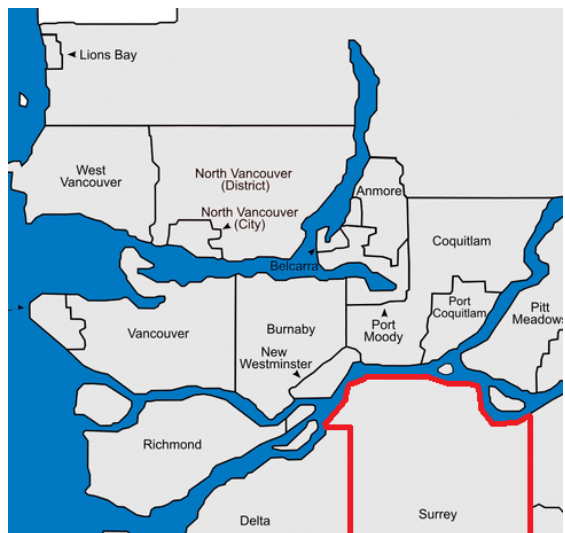


Figure 68: City of Surrey.
Source: Tourism Vancouver Website (2019)

Forage Fish Sampling: Location Codes

TS – Tsawwassen First Nation



Figure 69: Tsawwassen First Nation land.
Source: Indigenous and Northern Affairs Canada Website (2010)

VA – City of Vancouver

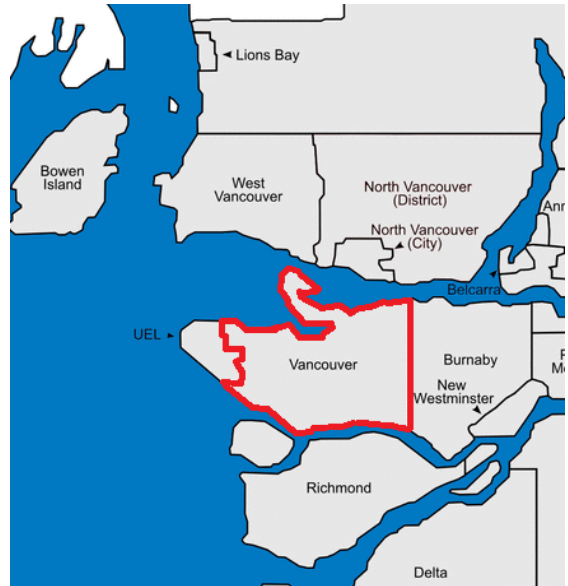


Figure 70: City of Vancouver.
Source: Tourism Vancouver Website (2019)

WR – City of White Rock



Figure 71: City of White Rock.
Source: White Rock Lifestyles Website (2019)

WV – District of West Vancouver



Figure 72: District of West Vancouver.
Source: Tourism Vancouver Website (2019)

12.2 Electoral Areas

MA – MVRD Electoral Area A

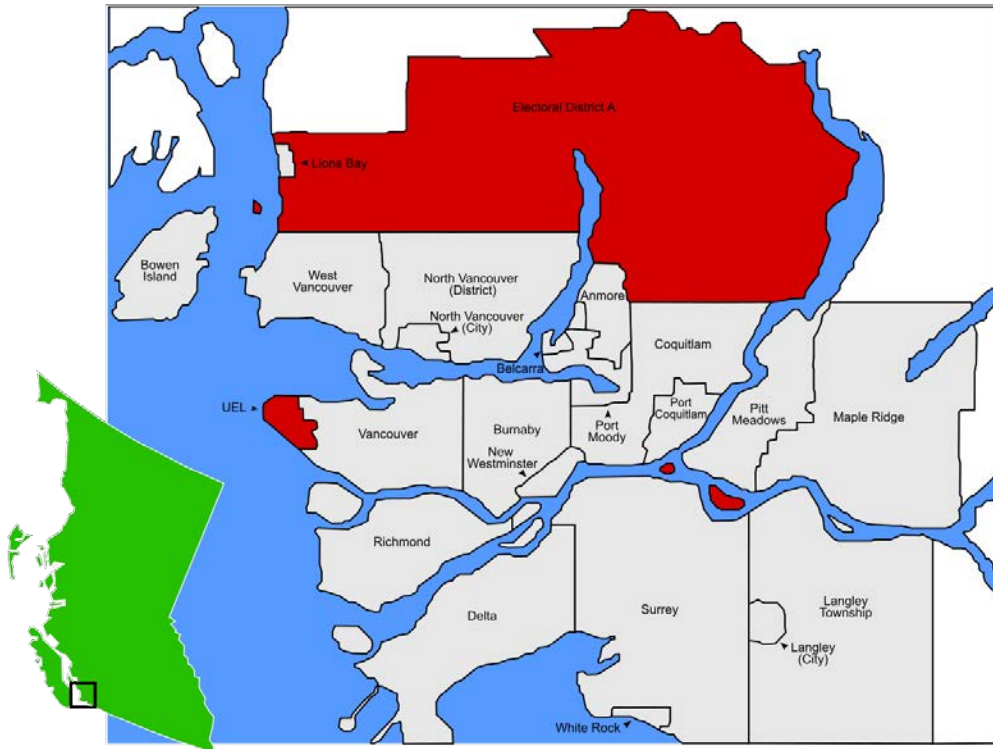


Figure 73: Electoral Area A in Metro Vancouver Regional District.
Source: Wikipedia (2019)

13.0 REFERENCES

- De Graaf, R. (2010). *Preliminary Habitat Assessment for suitability of intertidally spawning forage fish species, Pacific sand lance (Ammodytes hexapterus) and surf smelt (Hypomesus pretiosus) Esquimalt Lagoon, Colwood, British Columbia*. Retrieved from Capital Regional District website: <https://www.crd.bc.ca/docs/default-source/es-harbours-pdf/esquimalt-lagoon/esquimaltlagoon-foragefishsurvey-degraffe-2010.pdf?sfvrsn=2>
- De Graaf, R. (2013, August). *Forage Fish*. Presented at Thetis Island, stewarding our shores Workshop, Thetis Island, Canada. Retrieved from <https://www.youtube.com/watch?v=o4C52I6k-XU>
- McKechnie, I., Lepofsky, D., Moss, M.L., Butler, V.L., Orchard, T.J., Coupland, G., Foster, F., Caldwell, M., Lertzman, K. (2014). Archeological data provide alternative hypotheses on Pacific herring (*Clupea pallasii*) distribution, abundance, and variability. *Proceedings of the National Academy of Sciences of the United States of America*. 111, E807-E816.
- BC Ministry of Environment. (2014). Environmental Guidelines for Urban and Rural Land Development in British Columbia. Develop with Care: Fact Sheet #21: Coastal Forage Fish. Retrieved from: <http://www.env.gov.bc.ca/wld/documents/bmp/devwithcare/Fact-Sheet-21-Forage-Fish.pdf>
- Pentilla, D., 2007. *Marine Forage Fishes in Puget Sound*. Prepared in support of the Puget Sound Nearshore Partnership. Technical Report No.2007-03. Published by Seattle District, U.W. Army corps of Engineers, Seattle, Washington.

APPENDIX A: QUICK SUMMARY OF LOCATION CODES

Alberni-Clayoquot Regional District – ACRD

Bamfield ACRD Electoral Area A - BF
City of Port Alberni – CP
District of Tofino – TO
District of Ucluelet – UC
Long Beach ACRD Electoral Area C - LO

Capital Regional District – CRD

City of Colwood – CO
City of Langford – LF
City of Victoria – VI
District of Central Saanich – CS
District of Highlands - HI
District of Metchosin – ME
District of North Saanich – NS
District of Oak Bay – OB
District of Saanich – SN
District of Sooke – SO
Juan de Fuca CRD Electoral Area – JF
Salt Spring Island CRD Electoral Area – SS
Southern Gulf Islands CRD Electoral Area – SG
Town of Sidney – SI
Town of View Royal – VR
Township of Esquimalt – ES

Comox Valley Regional District – CMVRD

Baynes Sound – Denman/Hornby Islands CMVRD Electoral Area A – BS
City of Courtenay – CT
Lazo North CMVRD Electoral Area B – LN
Puntledge-Black Creek CMVRD Electoral Area C – PU
Town of Comox – CM
Village of Cumberland – CU

Cowichan Valley Regional District – CWVRD

City of Duncan – DU
Cobble Hill CWVRD Electoral Area C – CH
Cowichan Bay CWVRD Electoral Area D – CB
Cowichan Lake South – Skutz Falls CWVRD Electoral Area F – CL
Gulf Islands – Saltair CWVRD Electoral Area G – GI
Mill Bay – Malahat CWVRD Electoral Area A – MB
Municipality of North Cowichan – NC
North Oyster – Diamond CWVRD Electoral Area H – NO
Town of Ladysmith – LS
Town of Lake Cowichan – LC

Forage Fish Sampling: Location Codes

Metro Vancouver Regional District – MVRD

Bowen Island Municipality – BI

City of Burnaby – VU

City of Delta – DE

City of Maple Ridge – MR

City of North Vancouver – NV

City of Port Moody – PY

City of Richmond – RI

City of Surrey – SU

City of Vancouver – VA

City of White Rock – WR

District of North Vancouver – DN

District of West Vancouver – WV

MVRD Electoral Area A – MA

Tsawwassen First Nation – TS

Village of Anmore – AN

Village of Belcarra – BE

Village of Lion’s Bay – LB

Powell River Regional District – PRRD

City of Powell River – PR

Lasqueti Island PRRD Electoral Area E – LI

PRRD Electoral Area A – PA

PRRD Electoral Area B – PB

PRRD Electoral Area C – PC

Texada Island PRRD Electoral Area D – TI

Regional District of Mount Waddington – RDMW

District of Port Hardy – PH

RDMW Electoral Area A – RA

RDMW Electoral Area B – RB

RDMW Electoral Area C – RC

RDMW Electoral Area D – RD

Town of Port McNeill – PM

Village of Alert Bay – AB

Village of Port Alice – PO

Regional District of Nanaimo – RDN

Cassidy, Cedar, Yellow Point, South Wellington RDN Electoral Area A – CC

City of Nanaimo – NA

City of Parksville – PK

District of Lantzville – LA

French Creek, Dashwood, Englishman River RDN Electoral Area G – FC

Forage Fish Sampling: Location Codes

Gabriola, DeCourcy, Mudge Islands RDN Electoral Area B – GD
Nanoose Bay RDN Electoral Area E – NB
Shaw Hill, Qualicum Bay, Deep Bay, Bowser, Spider Lake, Horne Lake RDN Electoral Area H – SH
Town of Qualicum Beach – QB

Strathcona Regional District – SRD

City of Campbell River – CR
Coretes SRD Electoral Area B – CI
Discovery Islands – Mainland Inlets SRD Electoral Area C – DM
Kyuquot/Nootka-Sayward SRD Electoral Area A – KN
Oyster Bay-Buttle Lake SRD Electoral Area D – BL
Village of Gold River – GR
Village of Sayward – SA
Village of Tahsis – TA
Village of Zeballos – ZE

Sunshine Coast Regional District – SCR D

District of Sechelt – SE
Egmont-Pender Harbour SCR D Electoral Area A – EG
Elphinstore SCR D Electoral Area E – EL
Halfmoon Bay SCR D Electoral Area B – HB
Roberts Creek SCR D Electoral Area D – RO
Town of Gibsons – GB
West Howe Sound SCR D Electoral Area F – WH

APPENDIX B: FORAGE FISH SPAWNING BEACH SURVEY – HABITAT CHARACTERISTICS

Forage Fish Spawning Beach Survey



Location Code (Refer to document)

Region	Municipality	Beach	DFO Mngt Area

Last High Tide

Time (24hr):
Elevation:

2nd Effective High Tide

Time (24hr):
Elevation:

Samplers

Name(s)	
Organization	
Date (mm/dd/yy)	
Time (24hr)	
Camera ID	

Current Conditions

Air Temp (°C)	
Wind Direction	
Wind Speed (km/hr)	
Water Temp (°C)	

Sediment Sample Collection

Sample Station #	Sample #	Time (24hr)	UTM (m)	Beach	Backshore	Width (m)	Length (< or > 100m)	Landmark Object*	Landmark Distance (m)	Shading	Sample Type	Photo #

Comments

(Examples: What does the property surrounding the sample site look like? Is there anything around the site that could negatively impact the survival of forage fish embryos? Have there been any recent storm events or human actions that could have impacted forage fish embryo survival or dispersal?)

**Note: Your landmark distance may change each time you are at the beach depending on weather and tide conditions. Use the initial document with all the beaches as your reference for landmark.*

Figure 74: Forage Fish Spawning Beach Survey – Habitat Characteristics Data Sheet

Appendix II:
Fisheries and Oceans Canada (DFO)
Management Areas:
Vancouver Island

Imagery Gathered by: Mount Arrowsmith Biosphere Region Research Institute (MABRRI)

May 2018



TABLE OF CONTENTS

1.0 Introduction	61
2.0 Fisheries and Oceans Management Areas: Vancouver & Gulf Islands	62 – 79
2.1 Area 11: Cape Caution, Westcott Point	62
2.2 Area 12: Northern Johnstone Strait	63
2.3 Area 13: Quadra Island, Cortes Island	64
2.4 Area 14: Oyster River, Parksville	65
2.5 Area 15: Brettell Point, Powell River	66
2.6 Area 16: Texada Island, Lasqueti Island, Jervis Inlet	67
2.7 Area 17: Nanoose Bay, Galiano Island	68
2.8 Area 18: Mayne Island, Saanich	69
2.9 Area 19: Saanich, William Head	70
2.10 Area 20: Sooke, Bonilla Point Lighthouse	71
2.11 Area 21/22: Tzuquanah Point, Nitinat Lake	72
2.12 Area 23: Cape Beale, Ucluelet	73
2.13 Area 24: Cox Point, Estevan Point	74
2.14 Area 25: Nootka Sound, Esperanza Inlet	75
2.15 Area 26: Union Island, Solander Island	76
2.16 Area 27: Solander Island, Lawn Point, Cape Scott	77
2.17 Area 29: Lower Georgia Strait	78
2.18 Area 111: Open water north of Vancouver Island	79
3.0 References	80

FIGURES

Figure 1. Location data as seen on datasheet (Appendix A).	61
Figure 2. Cape Caution, Westcott Point DFO Management Area.	62
Figure 3. Northern Johnstone Strait DFO Management Area.	63
Figure 4. Quadra Island, Cortes Island DFO Management Area.	64
Figure 5. Oyster River, Parksville DFO Management Area.	65
Figure 6. Brettell Point, Powell River DFO Management Area.	66
Figure 7. Texada Island, Lasqueti Island, Jervis Inlet DFO Management Area.	67
Figure 8. Nanoose Bay, Galiano Island DFO Management Area.	68
Figure 9. Mayne Island, Saanich DFO Management Area.	69
Figure 10. Saanich, William Head DFO Management Area.	70
Figure 11. Sooke, Bonilla Point Lighthouse DFO Management Area.	71
Figure 12. Tzuquanah Point, Nitinat Lake DFO Management Area.	72
Figure 13. Cape Beale, Ucluelet DFO Management Area.	73
Figure 14. Cox Point, Estevan Point DFO Management Area.	74
Figure 15. Nootka Sound, Esperanza Inlet DFO Management Area.	75
Figure 16. Union Island, Solander Island DFO Management Area.	76
Figure 17. Solander Island, Lawn Point, Cape Scott DFO Management Area.	77
Figure 18. Lower Georgia Strait DFO Management Area.	78
Figure 19. Open water north of Vancouver Island DFO Management Area.	79

1.0 INTRODUCTION

'Forage fishes' is a term referring to species of small, schooling fishes that are an important food source for larger mammals, seabirds, and fish (Penttila, 2007). According to the BC Ministry of Environment, forage fish, also known as pelagic fishes, consist of numerous species, including: herring, anchovies, smelts, capelin, sardines, eulachon and sand lance (BC Ministry of Environment, 2014). These species are classified based on their ecological role in the marine ecosystem, rather than their taxonomy. Forage fish populations are declining globally, subsequently increasing adverse impacts culturally, ecologically, and economically (Mckechnie et al., 2014).

Although forage fish habitats are identified as critical fish habitat under the Canadian Fisheries Act, making them protected, BC has little data regarding the location and timing associated with these habitats (de Graaf, 2010). In response to this data gap, the Sea Watch Society developed the Forage Fish Program (FFP), which involves potential spawning site identification, as well as site surveying, mapping, and monitoring of two forage fish species within BC, surf smelt and Pacific sand lance (de Graaf, 2013). The FFP involves training volunteers and community groups along the coast of BC to identify potential spawning sites of these two species and offer monitoring of these locations (de Graaf, 2013).

In 2017, the Mount Arrowsmith Biosphere Region Research Institute (MABRRI) at Vancouver Island University was trained to use the "vortex method" by a Nearshore and Forage Fish Specialist from the Washington State Department of Fish and Wildlife. The MABRRI team monitors beaches along the coast, as well as trains citizen scientists to do the same in order to build the capacity of this project. Since 2017, other groups, including Peninsula Stream Society, have begun monitoring and training citizen science groups to further expand this initiative's capacity and range. By regularly monitoring the beaches, this initiative aims to reduce the current data gap that exists regarding forage fish spawning habitat along the Vancouver Island and Gulf Island coastlines.

MABRRI created this quick reference document, in addition to the "Vancouver Island Forage Fish Sampling: Location Codes" document, in order to aid in the standardization of data collection and data referencing. Codes for locations across the entirety of Vancouver Island were created in order to retrieve site specific data in a timely fashion. Each site that is sampled will have a corresponding code that includes the regional district of Vancouver Island, the municipality and/or electoral area, and the beach, as well as the DFO Management Area associated with it (Figure 1). This document includes the DFO Management Areas that influence Vancouver Island and the Gulf Islands.

Region	Municipality	Beach	DFO Mngt Area

Figure 1. Location data as seen on data sheet (Appendix A)

2.0 FISHERIES AND OCEANS MANAGEMENT AREAS: VANCOUVER & GULF ISLANDS

2.1 Area 11: Cape Caution, Westcott Point

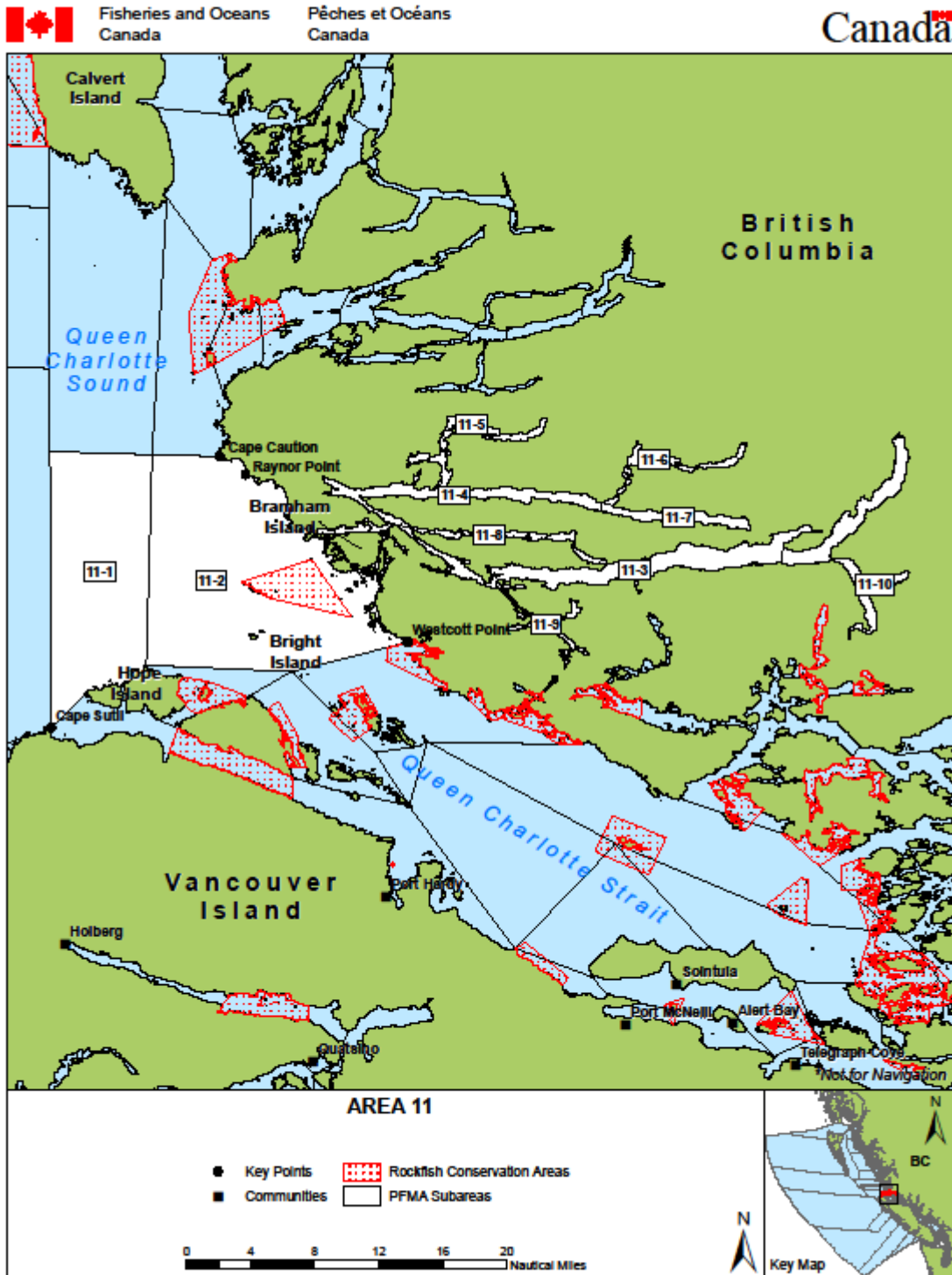


Figure 2. Cape Caution, Westcott Point DFO Management Area (DFO, 2017).

2.2 Area 12: Northern Johnstone Strait

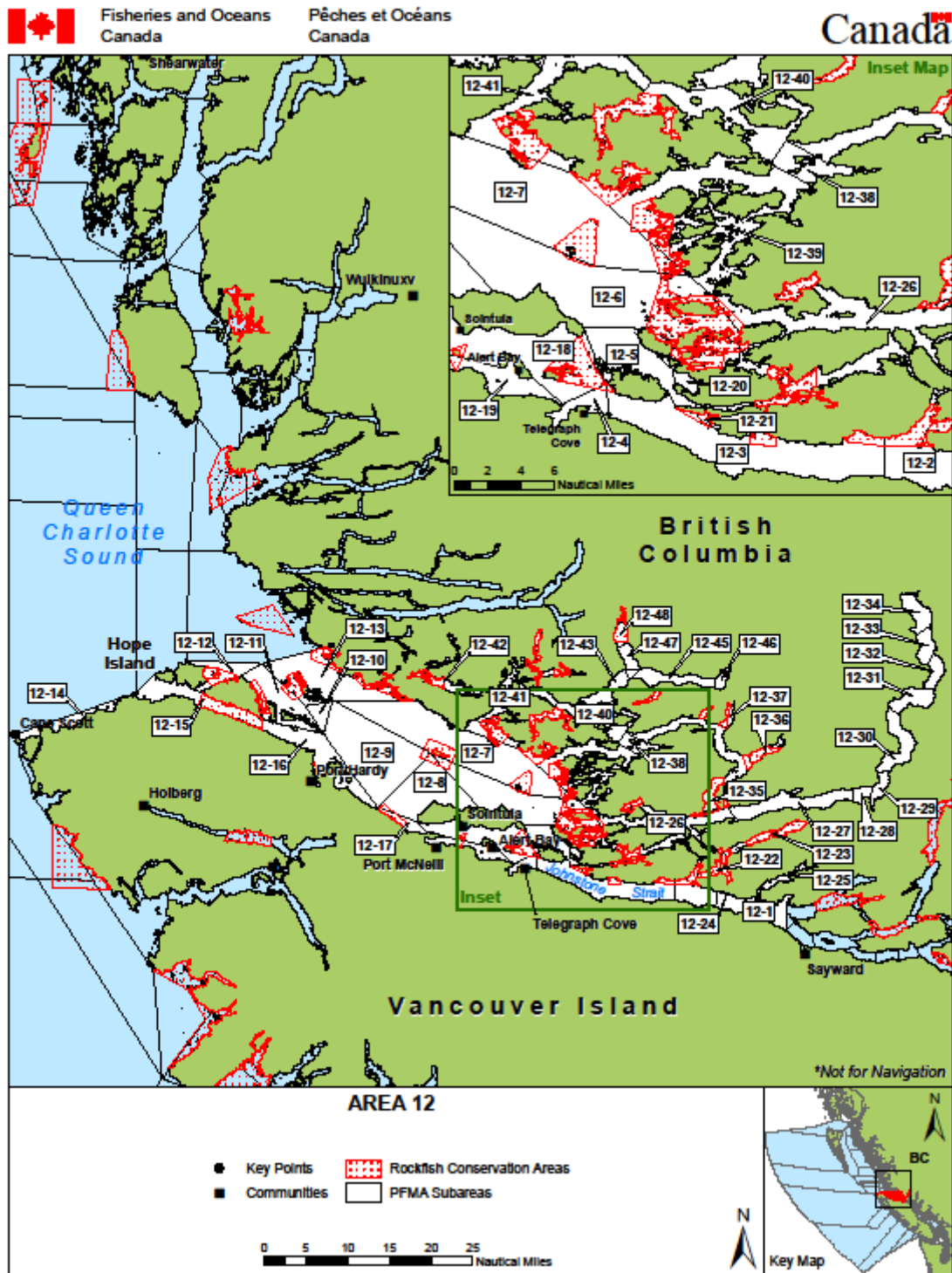


Figure 3. Northern Johnstone Strait DFO Management Area (DFO, 2017).

2.3 Area 13: Quadra Island, Cortes Island



Figure 4. Quadra Island, Cortes Island DFO Management Area (DFO, 2017).

2.4 Area 14: Oyster River, Parksville

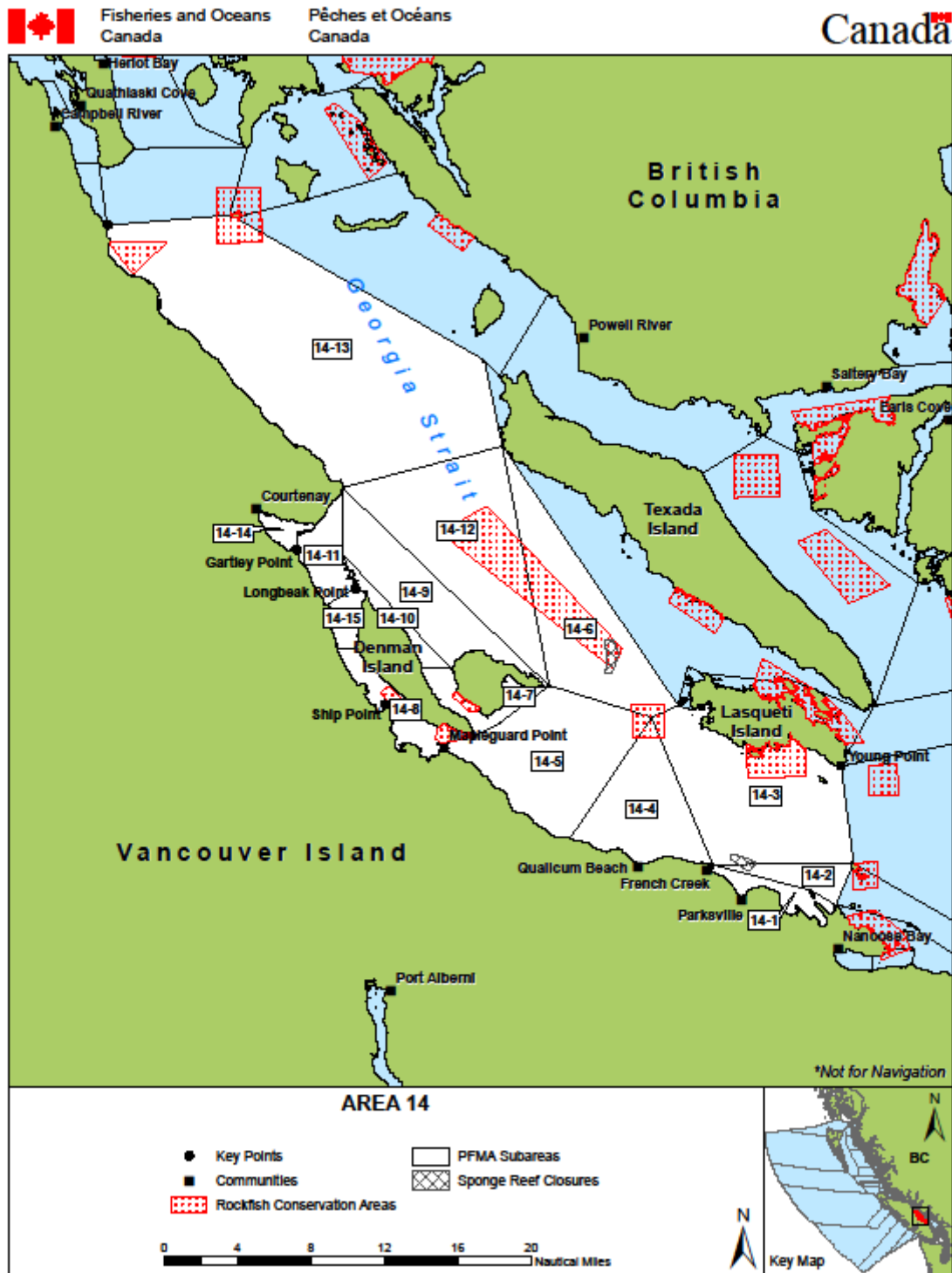


Figure 5. Oyster River, Parksville DFO Management Area (DFO, 2017).

2.5 Area 15: Brettell Point, Powell River



Figure 6. Brettell Point, Powell River DFO Management Area (DFO, 2017).

2.6 Area 16: Texada Island, Lasqueti Island, Jervis Inlet

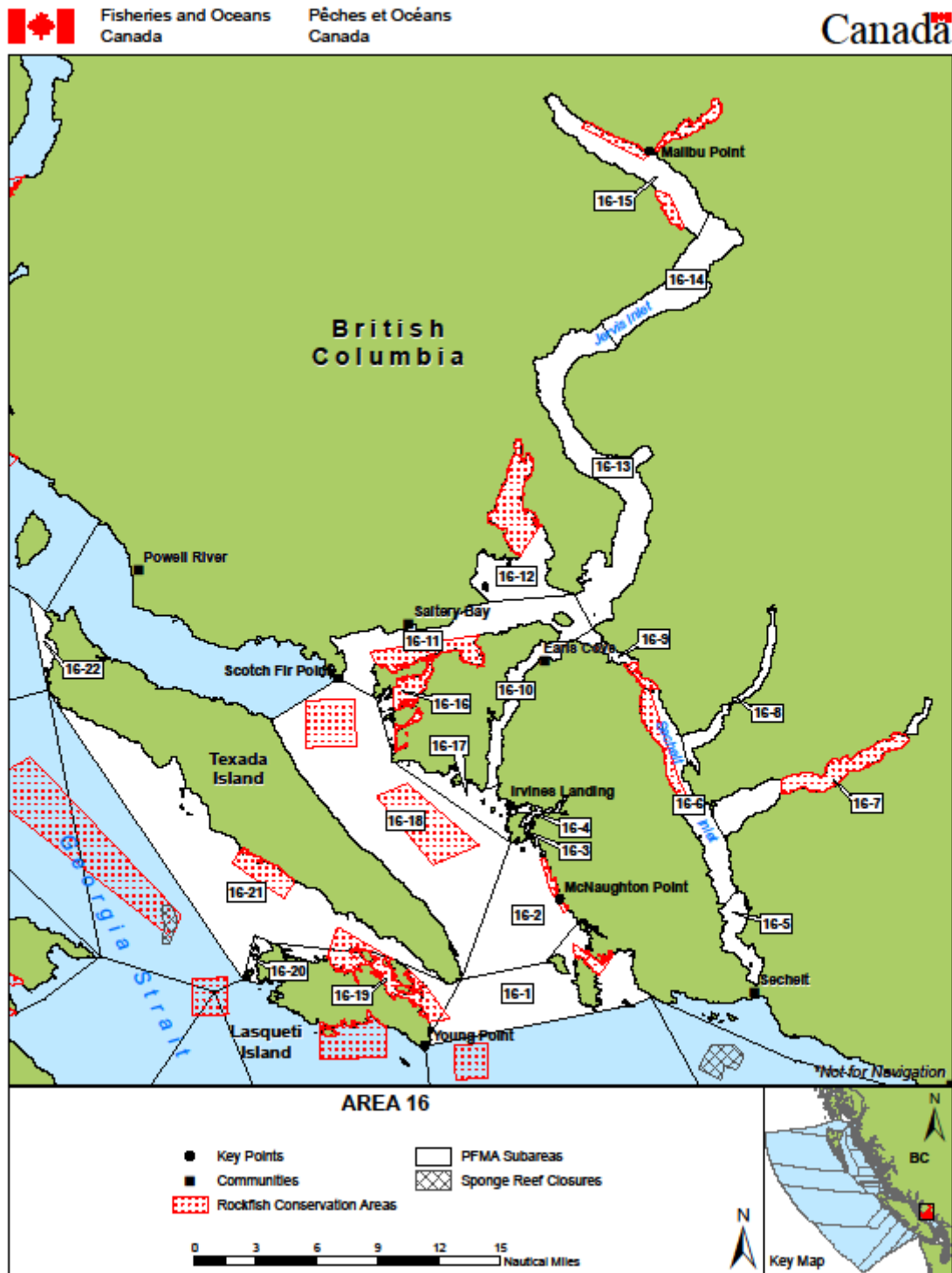


Figure 7. Texada Island, Lasqueti Island, Jervis Inlet DFO Management Area (DFO, 2017).

2.7 Area 17: Nanoose Bay, Galiano Island

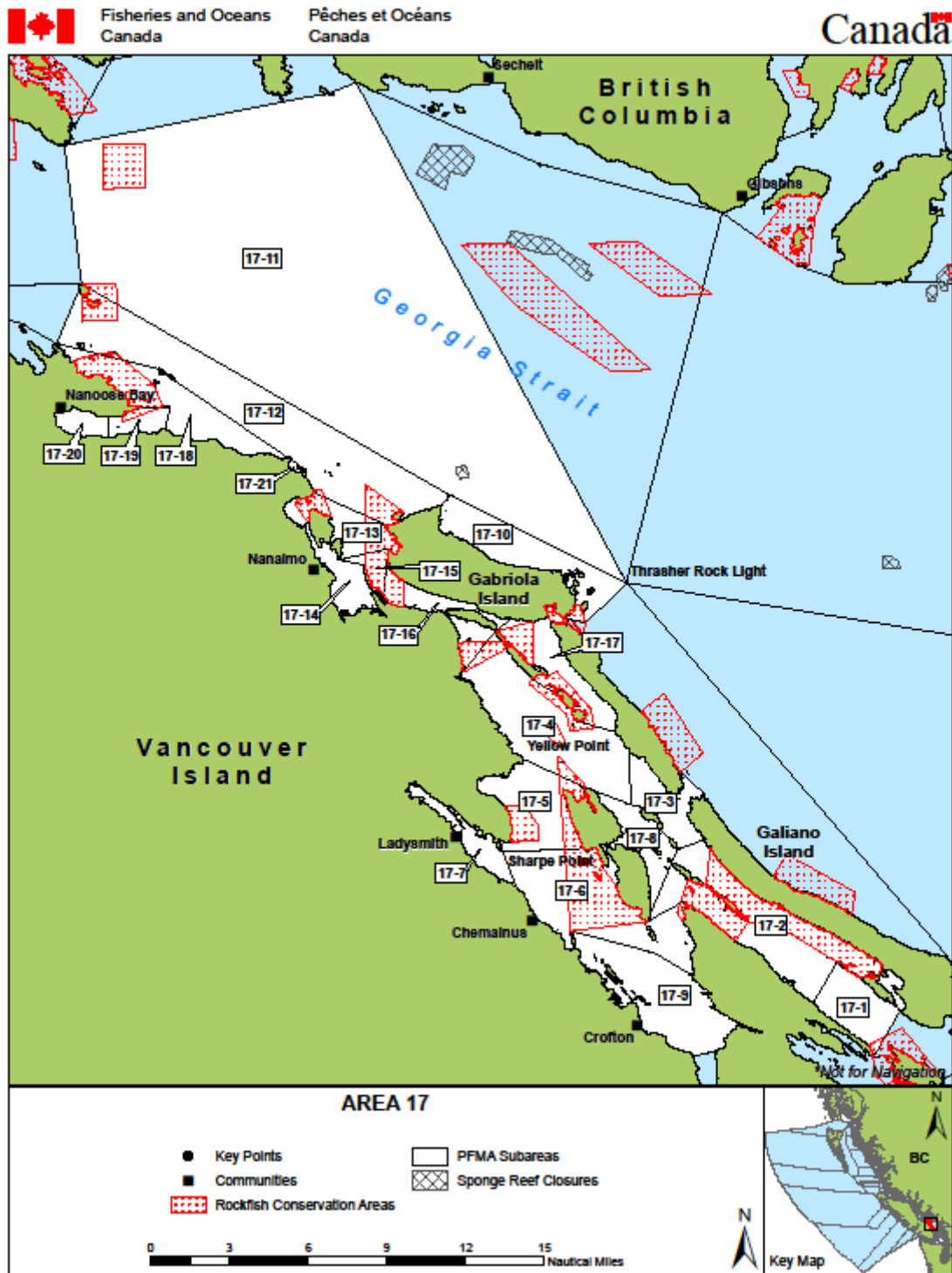


Figure 8. Nanoose Bay, Galiano Island DFO Management Area (DFO, 2017).

2.8 Area 18: Mayne Island, Saanich

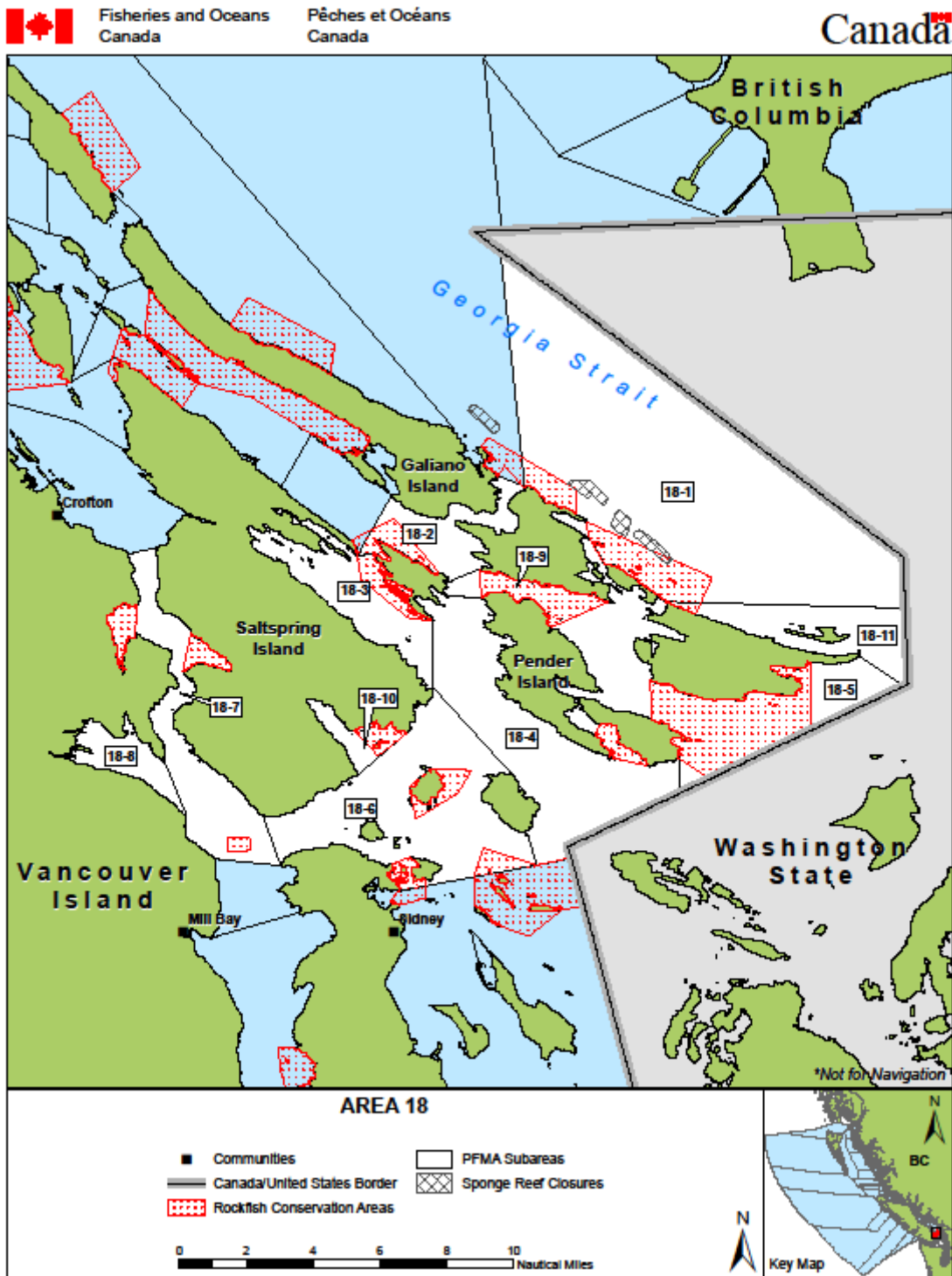


Figure 9. Mayne Island, Saanich DFO Management Area (DFO, 2017).

2.9 Area 19: Saanich, William Head

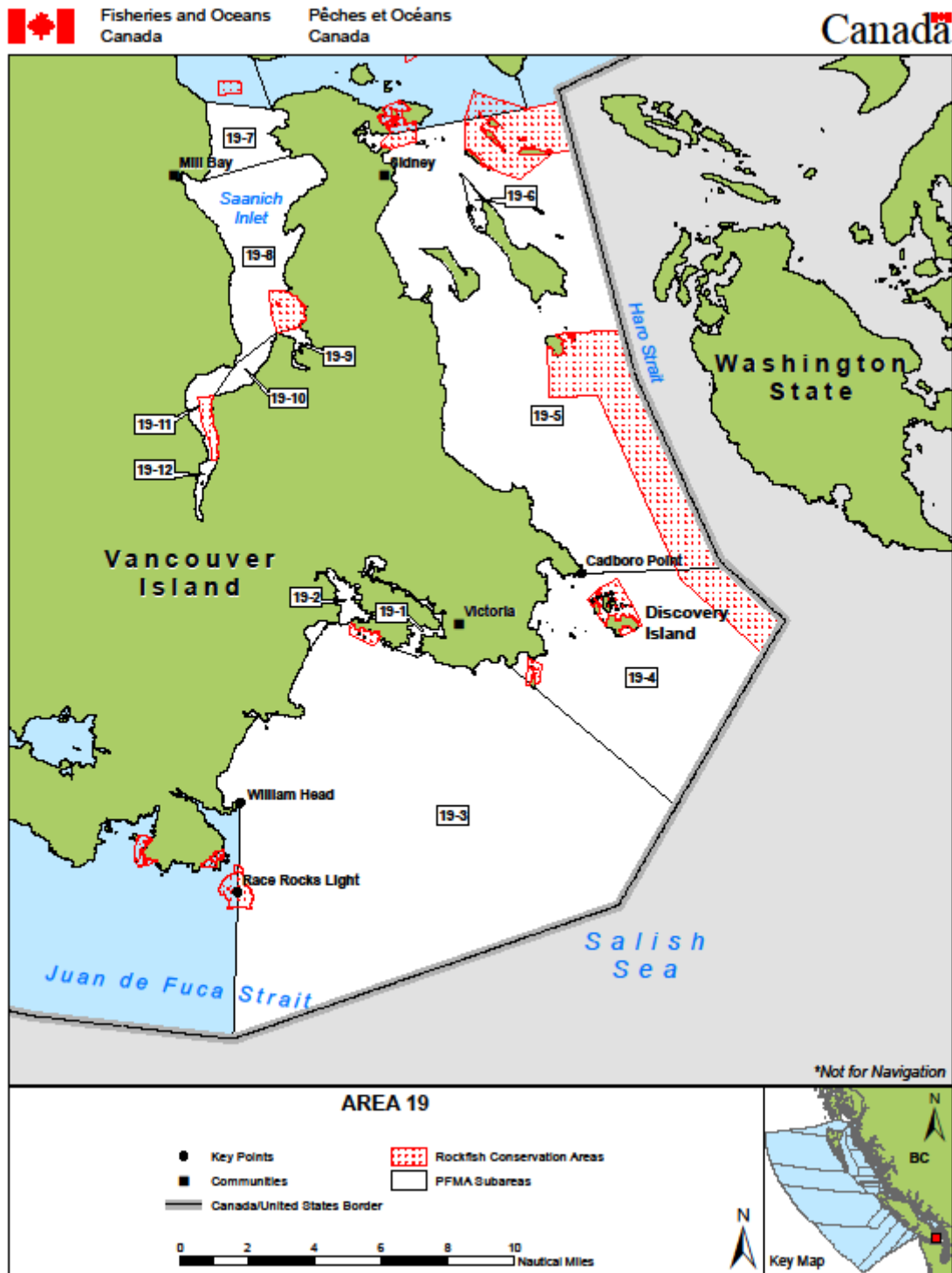


Figure 10. Saanich, William Head DFO Management Area (DFO, 2017).

2.10 Area 20: Sooke, Bonilla Point Lighthouse

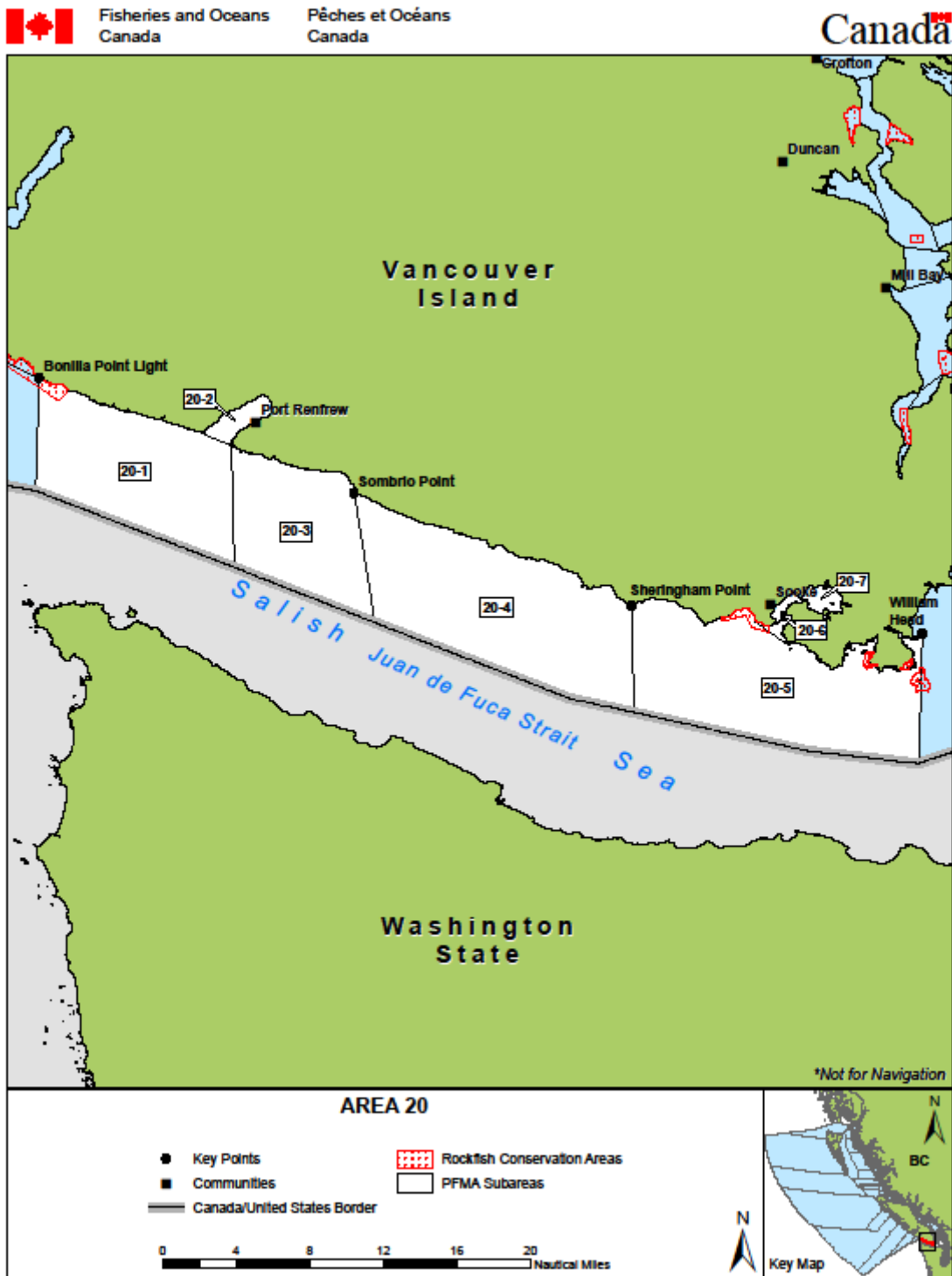


Figure 11. Sooke, Bonilla Point Lighthouse DFO Management Area (DFO, 2017).

2.11 Area 21/22: Tzuquanah Point, Nitinat Lake



Figure 12. Tzuquanah Point, Nitinat Lake DFO Management Area (DFO, 2017).

2.12 Area 23: Cape Beale, Ucluelet

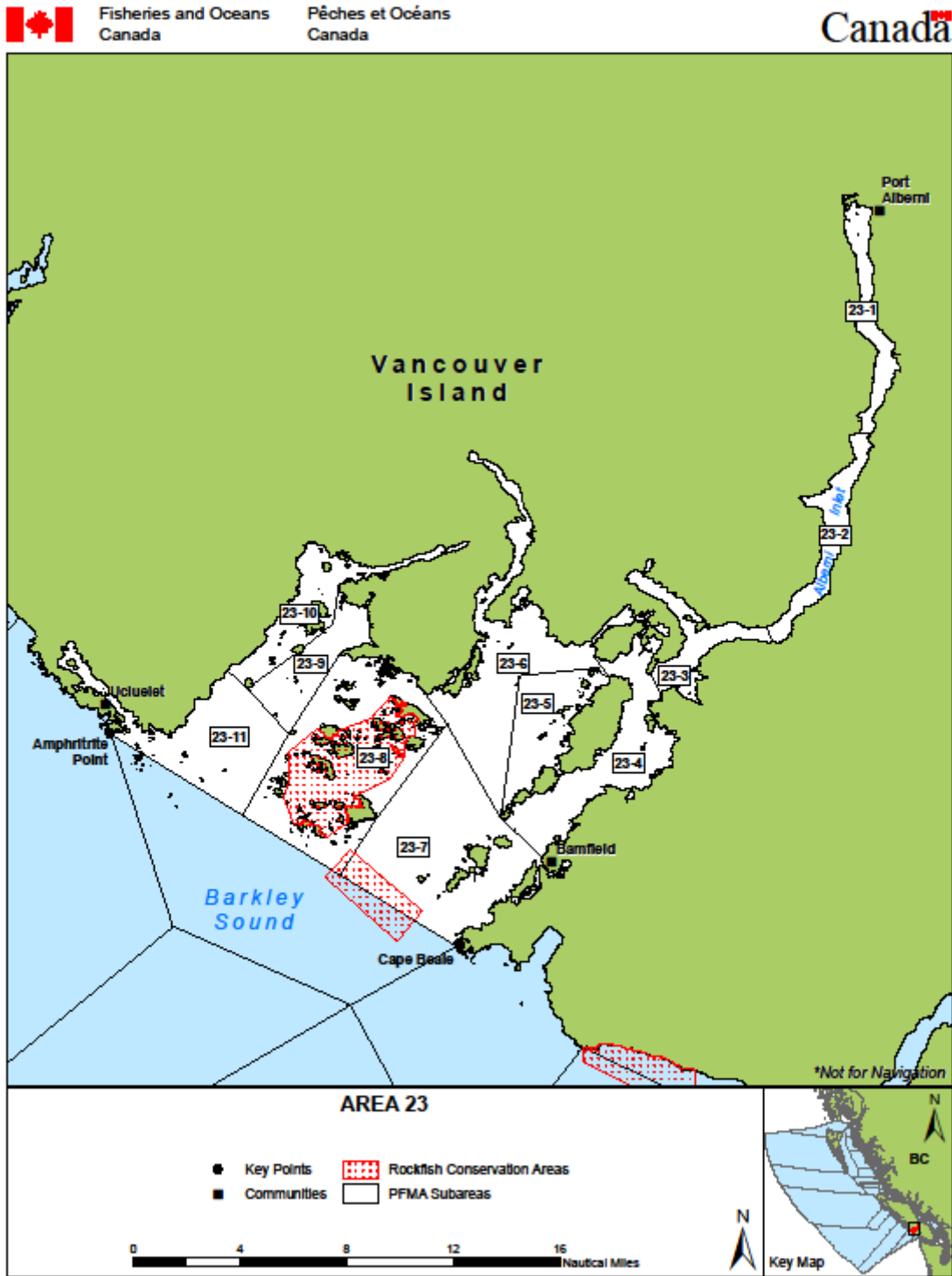


Figure 13. Cape Beale, Ucluelet DFO Management Area (DFO, 2017).

2.13 Area 24: Cox Point, Estevan Point

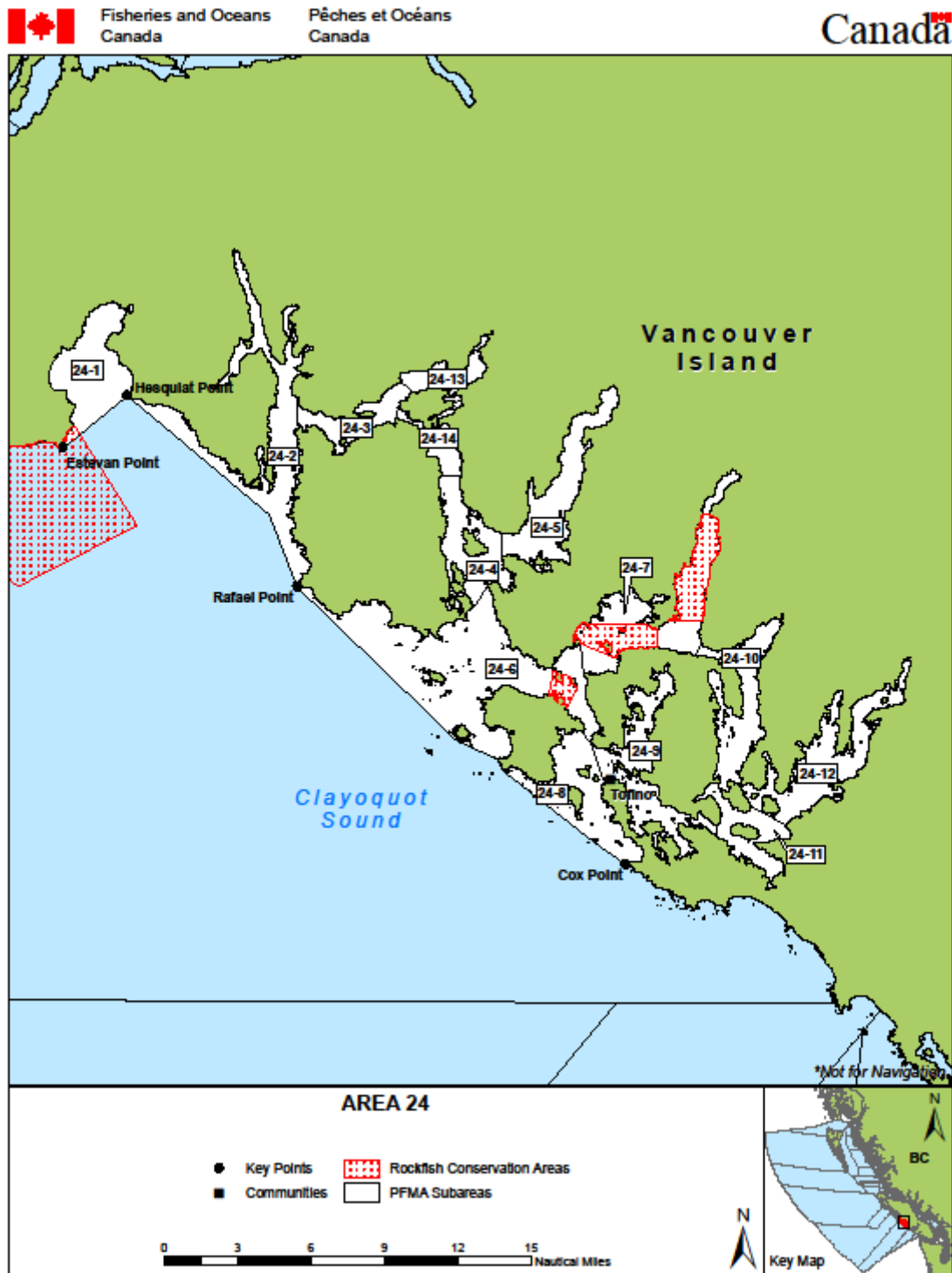


Figure 14. Cox Point, Estevan Point DFO Management Area (DFO, 2017).

2.14 Area 25: Nootka Sound, Esperanza Inlet

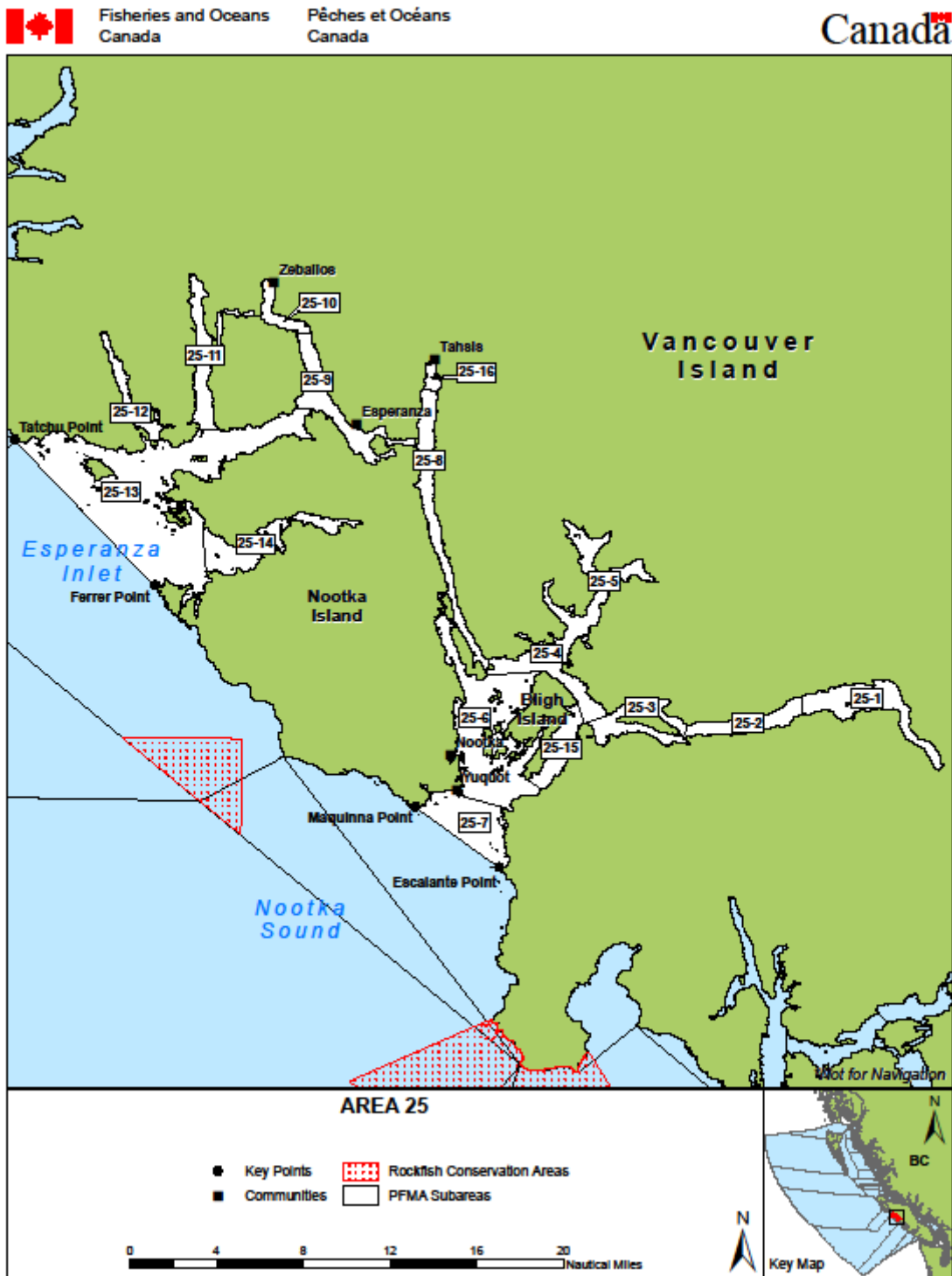


Figure 15. Nootka Sound, Esperanza Inlet DFO Management Area (DFO, 2017).

2.15 Area 26 Union Island, Solander Island

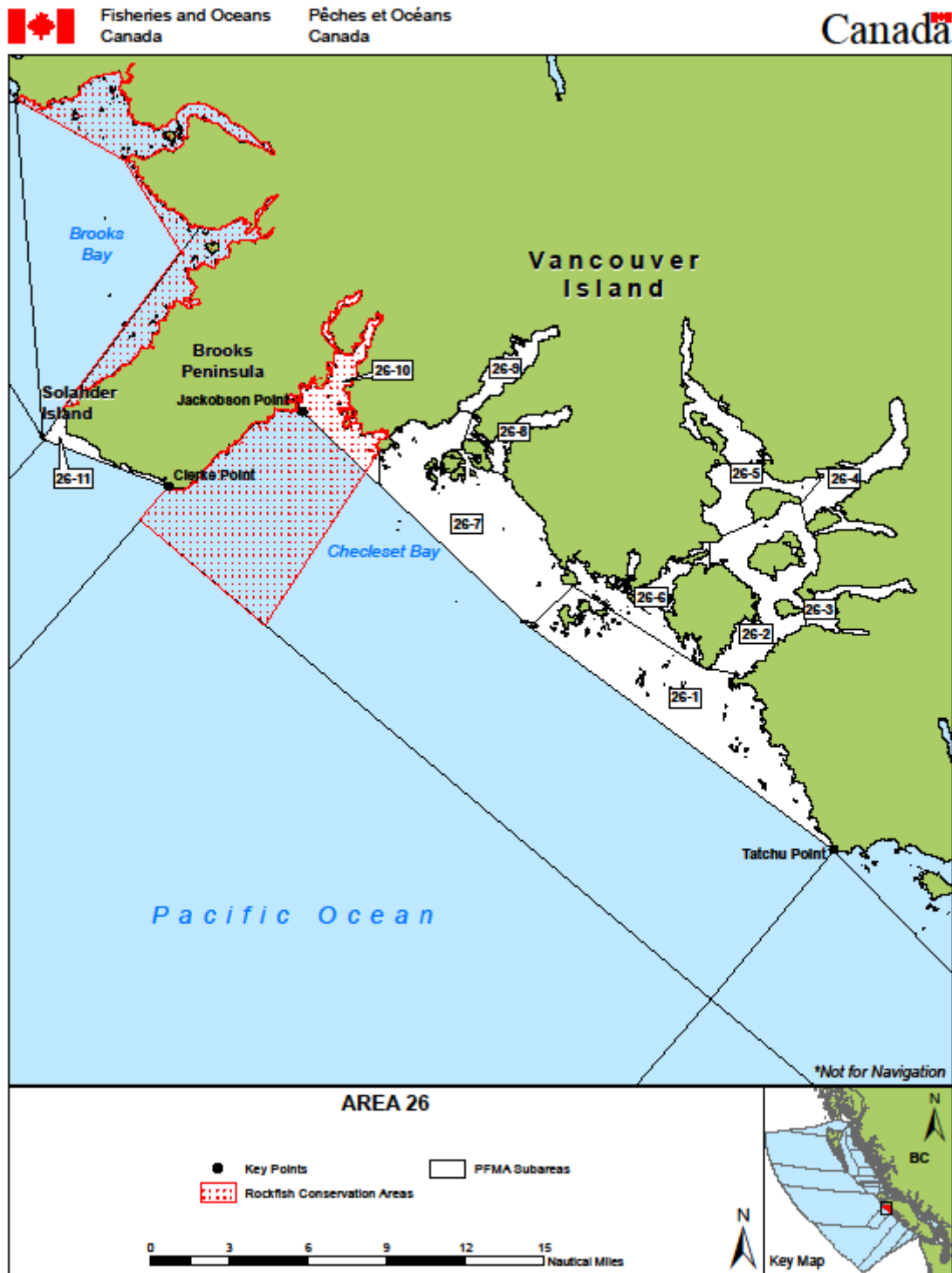


Figure 16. Union Island, Solander Island DFO Management Area (DFO, 2017).

2.16 Area 27: Solander Island, Lawn Point, Cape Scott

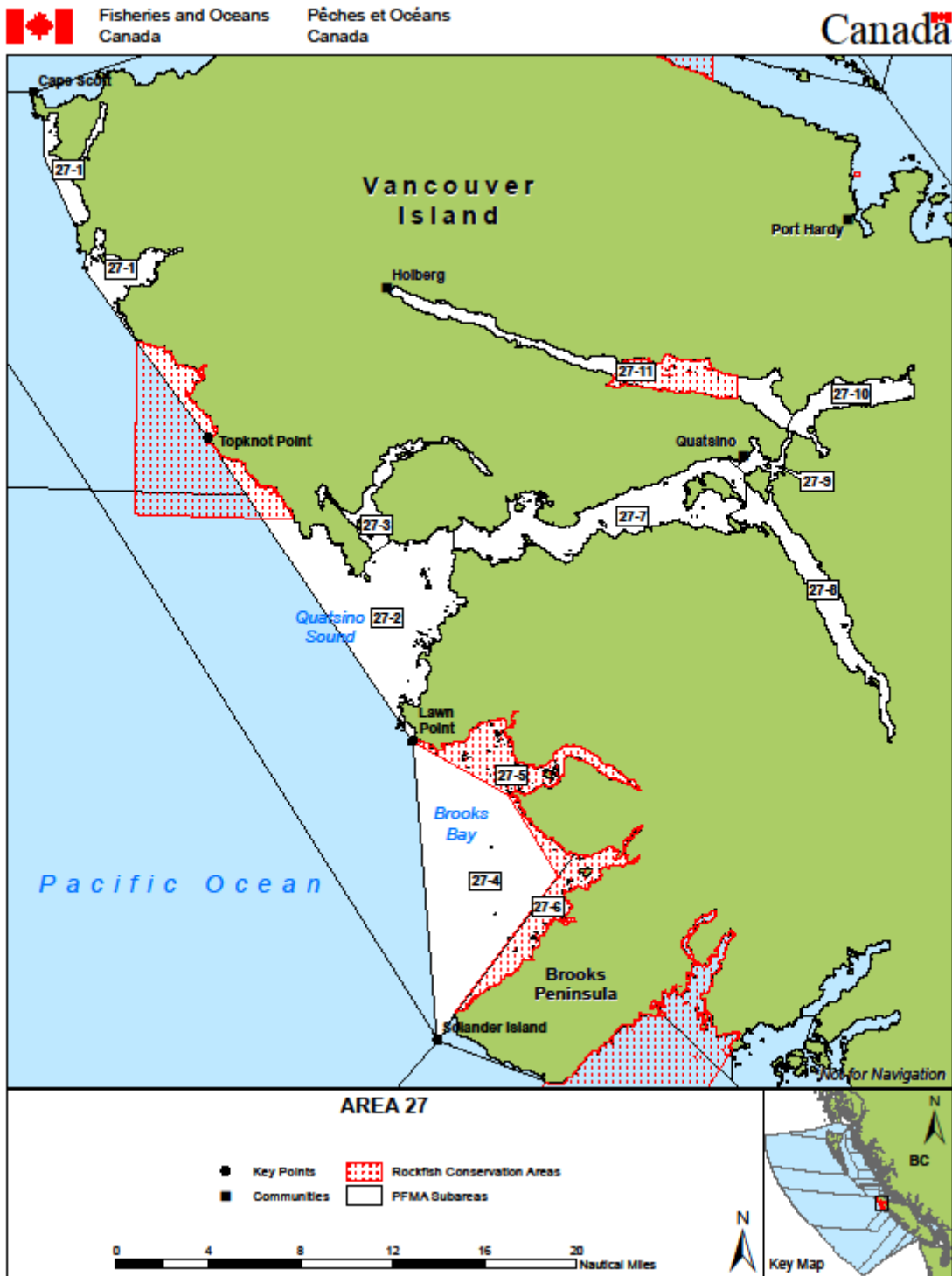


Figure 17. Solander Island, Lawn Point, Cape Scott DFO Management Area (DFO, 2017).

2.17 Area 29: Lower Georgia Strait

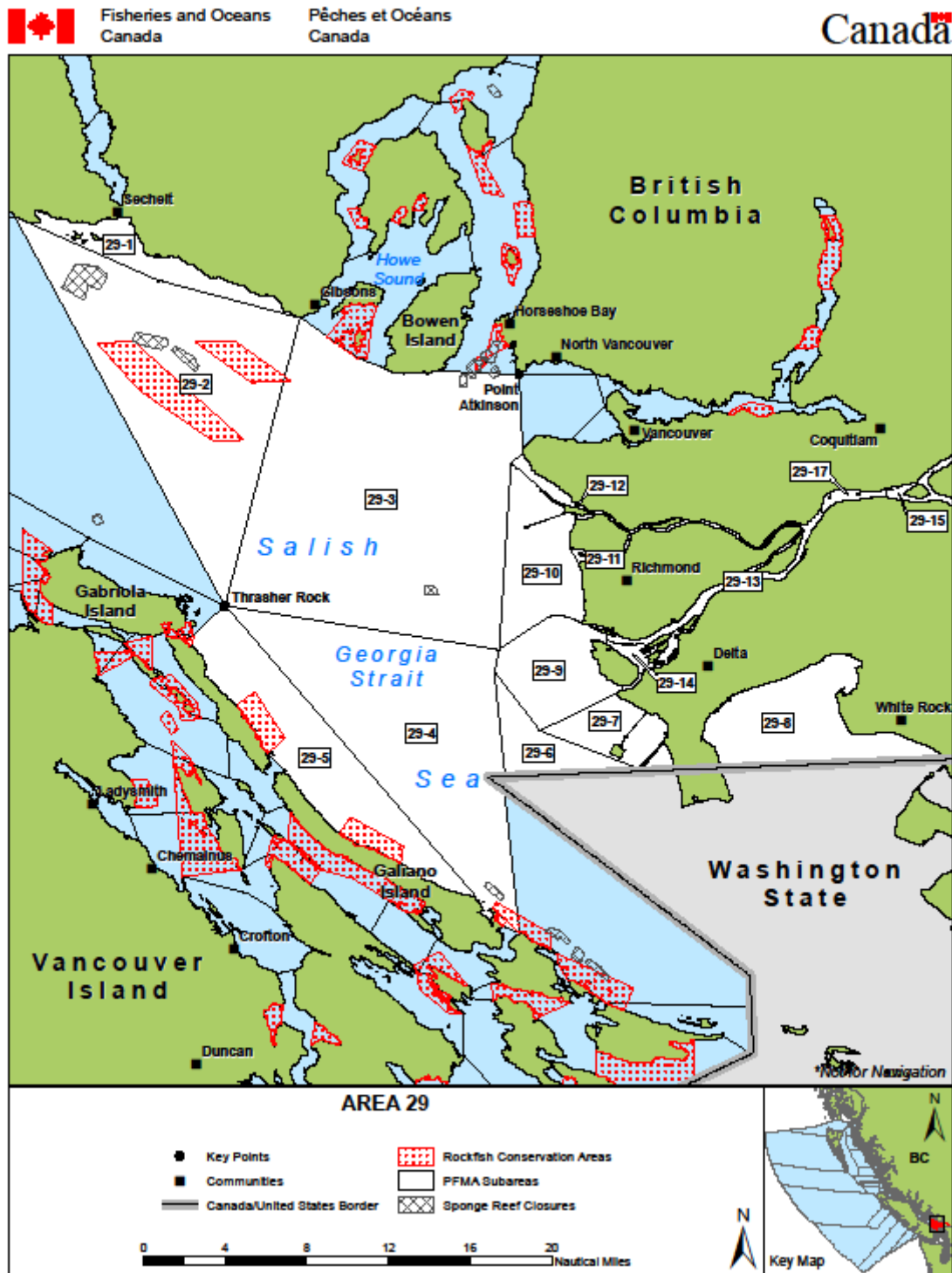


Figure 18. Lower Georgia Strait DFO Management Area (DFO, 2017).

2.18 Area 111: Open water north of Vancouver Island

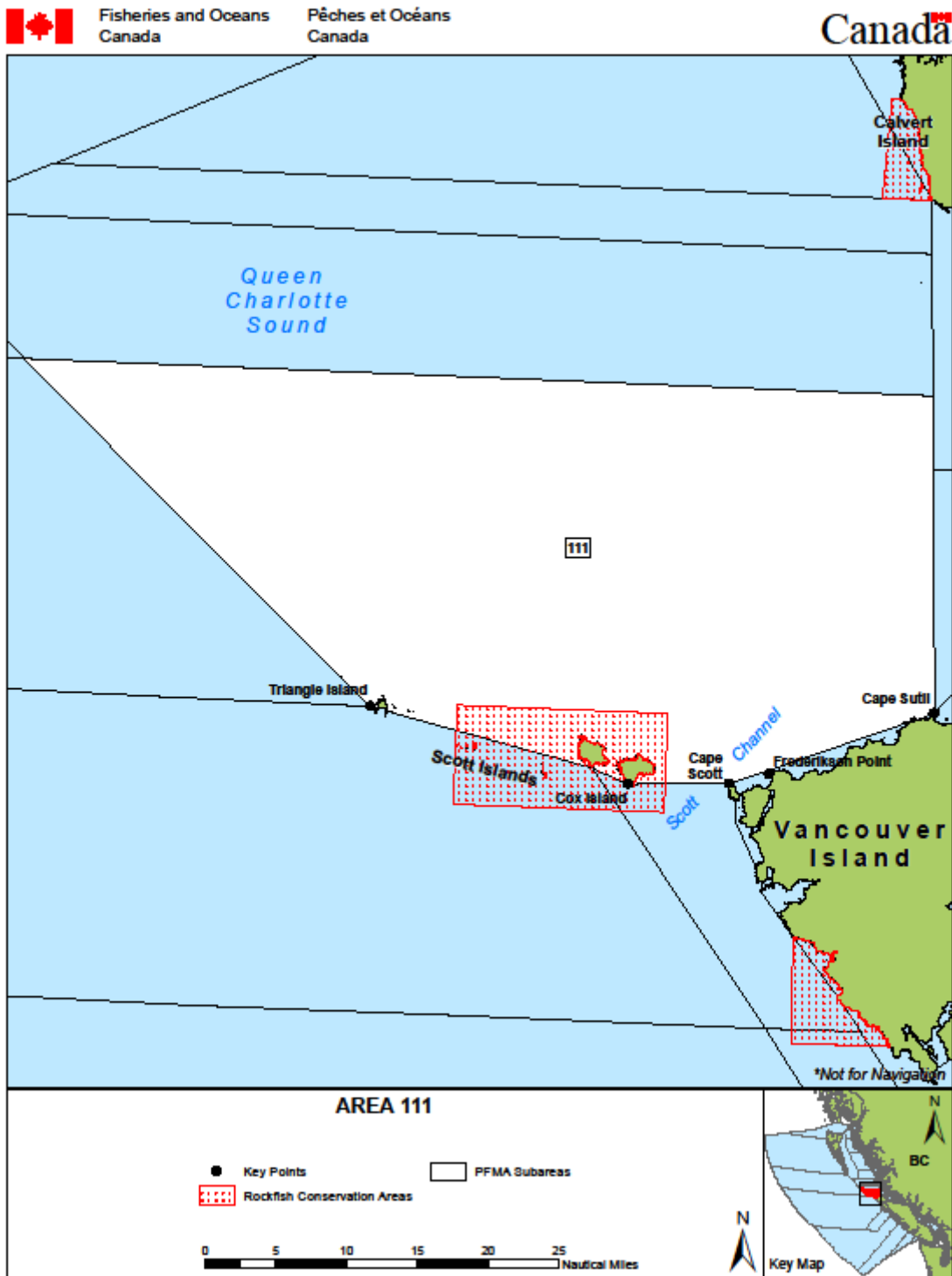


Figure 19. Open water north of Vancouver Island DFO Management Area (DFO, 2017).

3.0 REFERENCES

- De Graaf, R. (2010). *Preliminary Habitat Assessment for suitability of intertidally spawning forage fish species, Pacific sand lance (Ammodytes hexapterus) and surf smelt (Hypomesus pretiosus) Esquimalt Lagoon, Colwood, British Columbia*. Retrieved from Capital Regional District website: <https://www.crd.bc.ca/docs/default-source/es-harbours-pdf/esquimalt-lagoon/esquimaltlagoon-foragefishsurvey-degraffe-2010.pdf?sfvrsn=2>
- De Graaf, R. (2013, August). *Forage Fish*. Presented at Thetis Island, stewarding our shores Workshop, Thetis Island, Canada. Retrieved from <https://www.youtube.com/watch?v=o4C52I6k-XU>
- McKechnie, I., Lepofsky, D., Moss, M.L., Butler, V.L., Orchard, T.J., Coupland, G., Foster, F., Caldwell, M., Lertzman, K. (2014). Archeological data provide alternative hypotheses on Pacific herring (*Clupea pallasii*) distribution, abundance, and variability. *Proceedings of the National Academy of Sciences of the United States of America*. 111, E807-E816.
- BC Ministry of Environment. (2014). Environmental Guidelines for Urban and Rural Land Development in British Columbia. Develop with Care: Fact Sheet #21: Coastal Forage Fish. Retrieved from: <http://www.env.gov.bc.ca/wld/documents/bmp/devwithcare/Fact-Sheet-21-Forage-Fish.pdf>
- Pentilla, D., 2007. *Marine Forage Fishes in Puget Sound*. Prepared in support of the Puget Sound Nearshore Partnership. Technical Report No.2007-03. Published by Seattle District, U.W. Army corps of Engineers, Seattle, Washington.